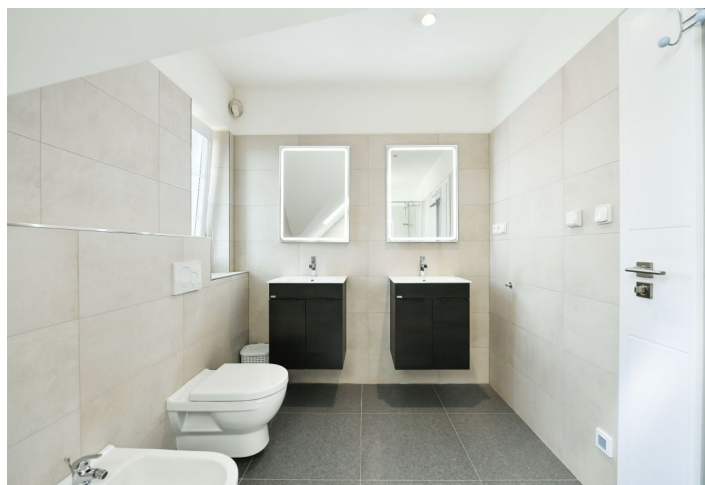




House Three-bedroom (4+kk)

Rented

259 m², Praha-západ, Libeň





House Three-bedroom (4+kk)

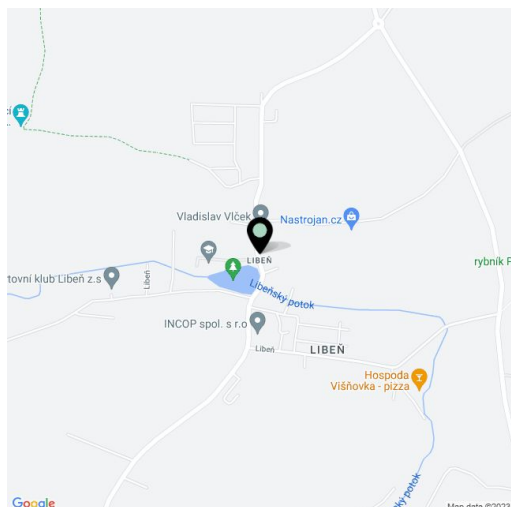
Rented259 m², Praha-západ, Libeň

Plot	1 003 m ²
Foot print	176 m ²
Garden	827 m ²
Parking	Garage and parking on the plot.
Garage	Yes
Cellar	Yes
Service price	Charges for water, garbage, and maintenance CZK 8,000/month for 3 persons. Another person CZK 1,000/month. Electricity - transferred to the tenant.
PENB	C
Reference number	42457
Available from	Immediately

This fully furnished family house for rent with a large garden and a separate guest house is located in a residential part of a quiet village near the edge of Prague. The village is close to international schools and surrounded by the beautiful countryside of the Střed Čech nature park. Complete amenities are available in Dolní Břežany (2 km away). A local bus from the village goes through Dolní Břežany and continues on to Prague to the Modřany Railway Station with good accessibility via direct tram and train connections to the city center.

The ground floor of the **main house** offers a living room with a **wood burning stove**, a dining area, a fully fitted open plan kitchen, and access to the **terrace/garden**, a fitted **walk-in closet**, a bathroom (shower), a separate toilet, and an entrance hall. The upper floor features a gallery, a master bedroom with a fitted **walk-in closet**, built-in wardrobes, and bathroom (shower, bidet, toilet), two bedrooms, and a fitted **walk-in closet**. There is a utility room and a pantry/cellar in the basement. There is also an adjoining **guest house** with its own entrance, consisting of a living room, a fully fitted open plan kitchen, a bathroom (shower, toilet), plus a bedroom on the upper floor.

Main house: smart home control system, **hardwood floors**, tiles, built-in wardrobes, underfloor heating, heat pump, solar panels, central vacuum cleaner, washer, dryer, dishwasher, induction cooktop, microwave oven, TV, alarm, well, automatic irrigation, automatic doors and gate, camera system, attic storage space. **Garage and two parking spaces** on the plot. **Guest house:** hardwood floors, tiles, dishwasher, induction cooktop, microwave oven, electric underfloor heating, covered parking space. The house can be rented unfurnished.

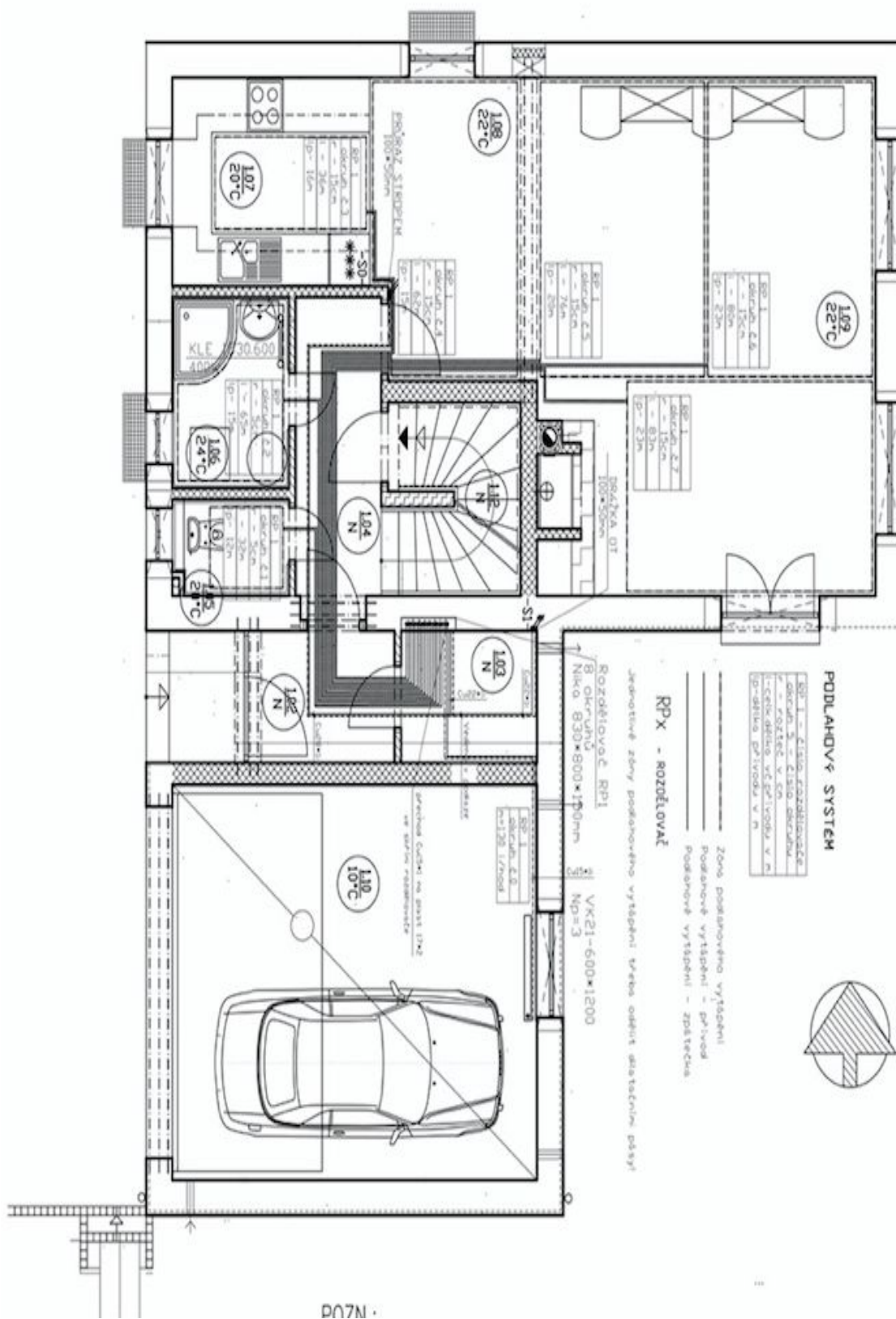




House Three-bedroom (4+kk)

Rented

259 m², Praha-západ, Libeň





House Three-bedroom (4+kk)

259 m², Praha-západ, Libeň

Rented

