



# Farmhouse estate Three-bedroom (4+kk)

€ 305 219 | CZK 7 690 000

Kladno, Třebíz





## Farmhouse estate Three-bedroom (4+kk)

€ 305 219 | CZK 7 690 000

Kladno, Třebíz

Usable area	88 m <sup>2</sup>
Foot print	90 m <sup>2</sup>
Plot	169 m <sup>2</sup>
Parking	Parking in front of the house
PENB	G
Reference number	42466

**A rare and unique opportunity to own a romantic restored house with a gallery built at the end of the 18th century full of character and historic details with an amazing atmosphere. Located in a peaceful and quiet village with a protected historic center, untouched by massive development, yet close to Prague. The village is located near the royal town of Slaný with complete civic amenities and infrastructure.**

On the ground floor, there is a fully equipped kitchen and a living room, a bathroom, a study/studio/guestroom, and an entrance hall. The first floor is accessible via the **gallery** and consists of 2 bedrooms, a bathroom, and a hallway.

This former tenant's cottage from the end of the 18th century was rebuilt in the middle of the 19th century and completely reconstructed in 2015 under the careful supervision of conservationists, **creating a home with a historical character yet with modern facilities**. All of the rooms on the ground floor and in the upper bathroom and hallway have **underfloor heating** and there is a **fireplace** in the living room. **The stone walls** are ventilated, with moisture and heat loss insulation under the floors. The house has a telephone line (used for Wi-Fi) and is connected to gas. **The exposed wooden beams, wooden floors**, wooden doors, six-panel casement windows, and **stylish furnishings** create a romantic and cozy atmosphere. The **furniture** can be left in the house upon agreement. The **nicely reconstructed courtyard** has a stone wall, the remains of a former barn, and there is ample space and privacy to sit and relax or enjoy al fresco dining. This lovely house is move-in ready without requiring additional investment or maintenance. It's therefore perfect as a permanent residence or as a holiday retreat.

The property is part of a residential area that has been declared a village conservation area. A post office, a municipal office, a library, a restaurant, **the Ethnographic Museum of Slansko**, or a kindergarten are in close proximity. Other services are in neighboring Slaný. The drive to the outskirts of Prague takes less than half an hour and the village is also served by a bus line. The village is mostly surrounded by agriculture and there is a **nature trail or bike path** that will take you to the nearby **forests and Džbán** nature park with many rare plants and animals.

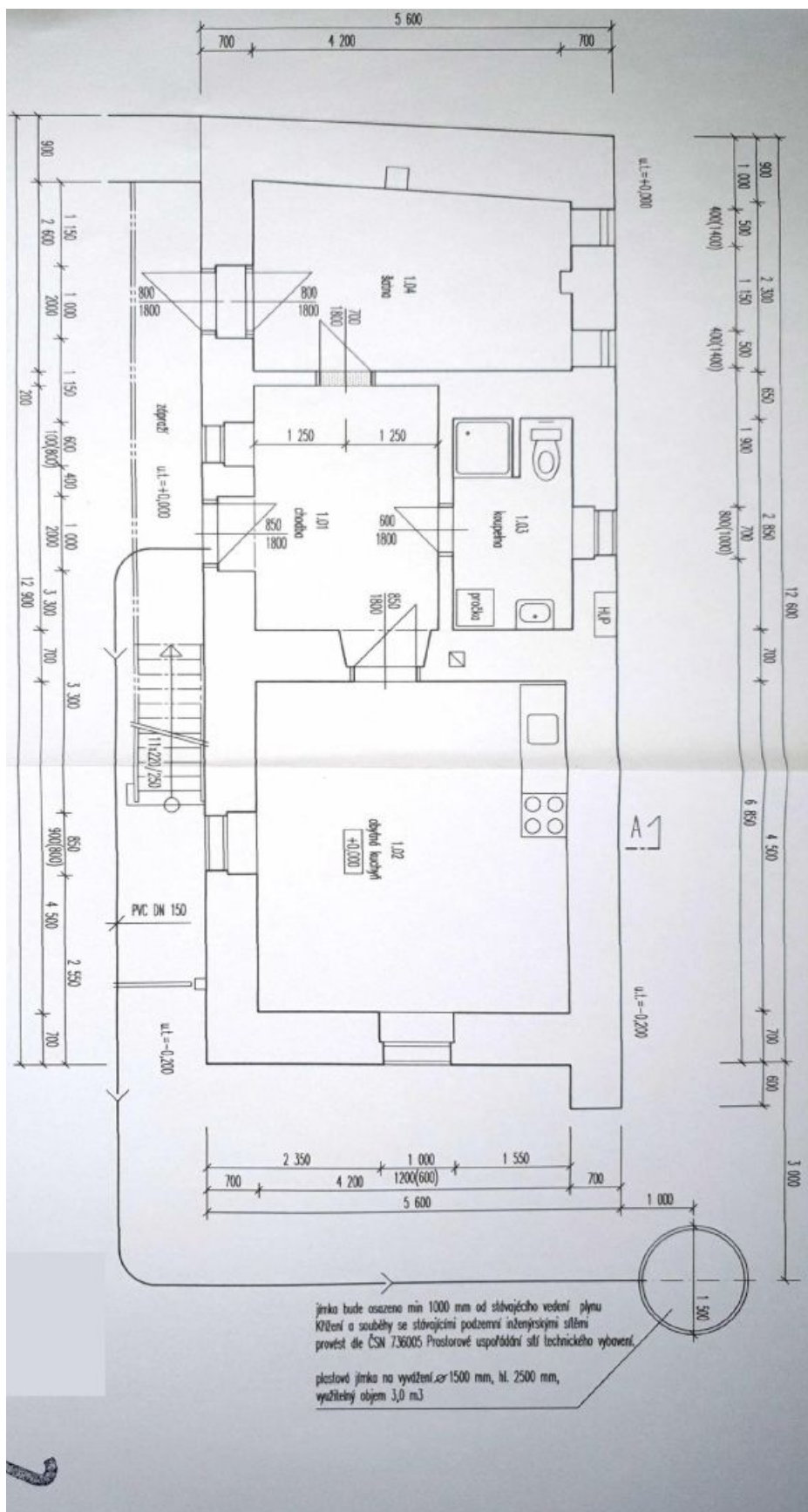
Usable area 88.4 m<sup>2</sup>, built-up area 90 m<sup>2</sup>, garden-courtyard 79 m<sup>2</sup>, land 169 m<sup>2</sup>.



# Farmhouse estate Three-bedroom (4+kk)

€ 305 219 | CZK 7 690 000

Kladno, Třebíz

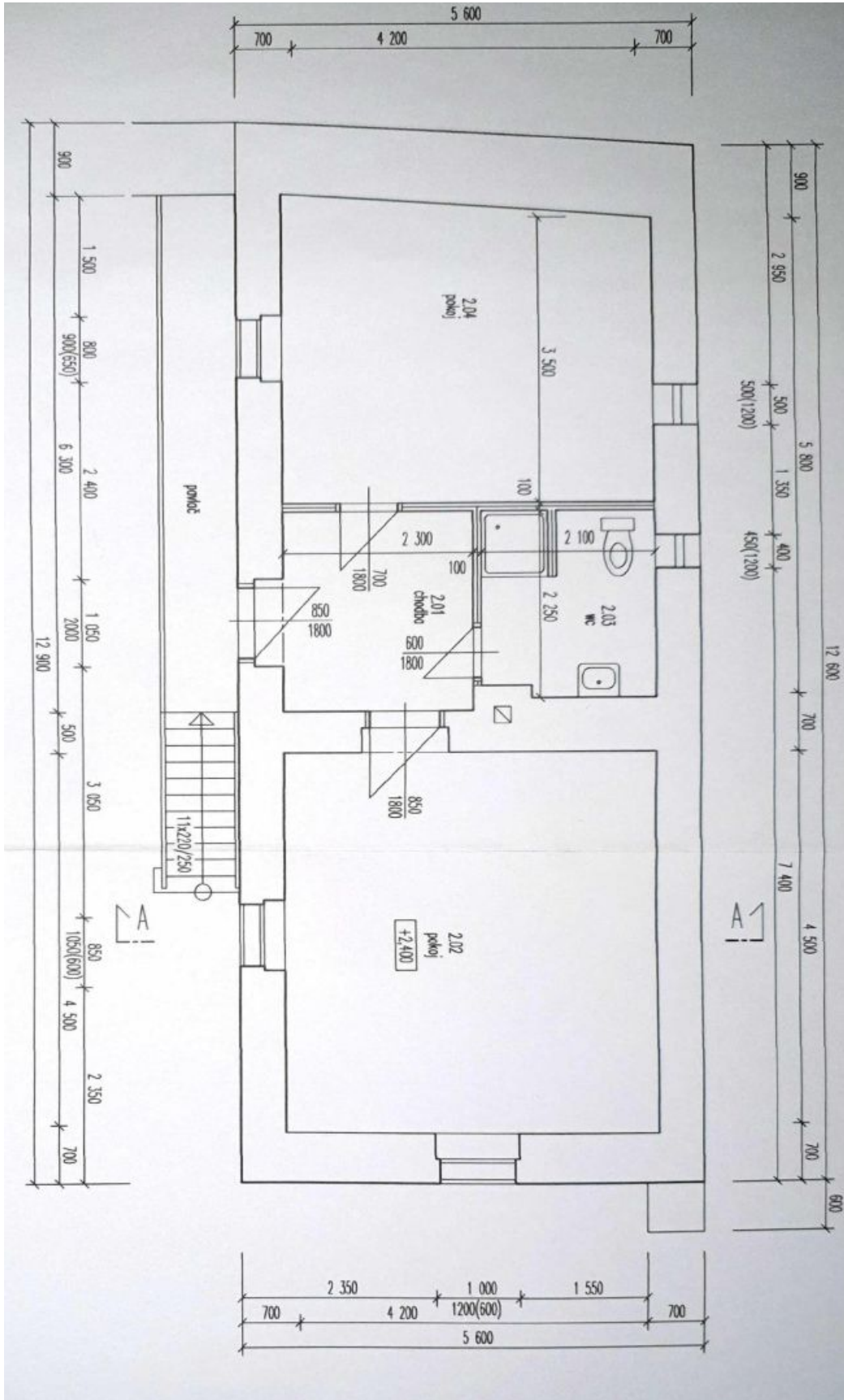




# Farmhouse estate Three-bedroom (4+kk)

€ 305 219 | CZK 7 690 000

Kladno, Třebíz

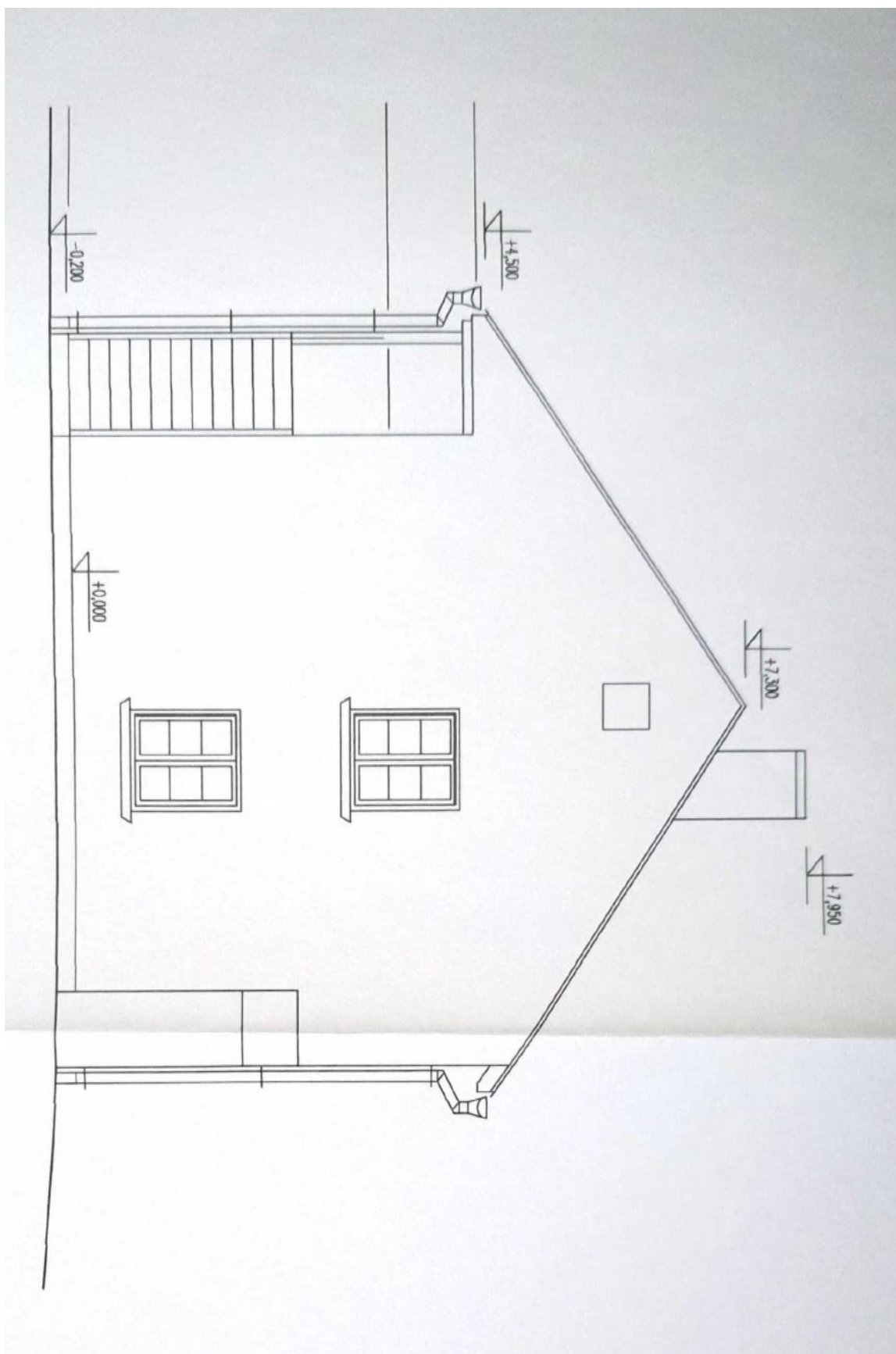




# Farmhouse estate Three-bedroom (4+kk)

€ 305 219 | CZK 7 690 000

Kladno, Třebíz

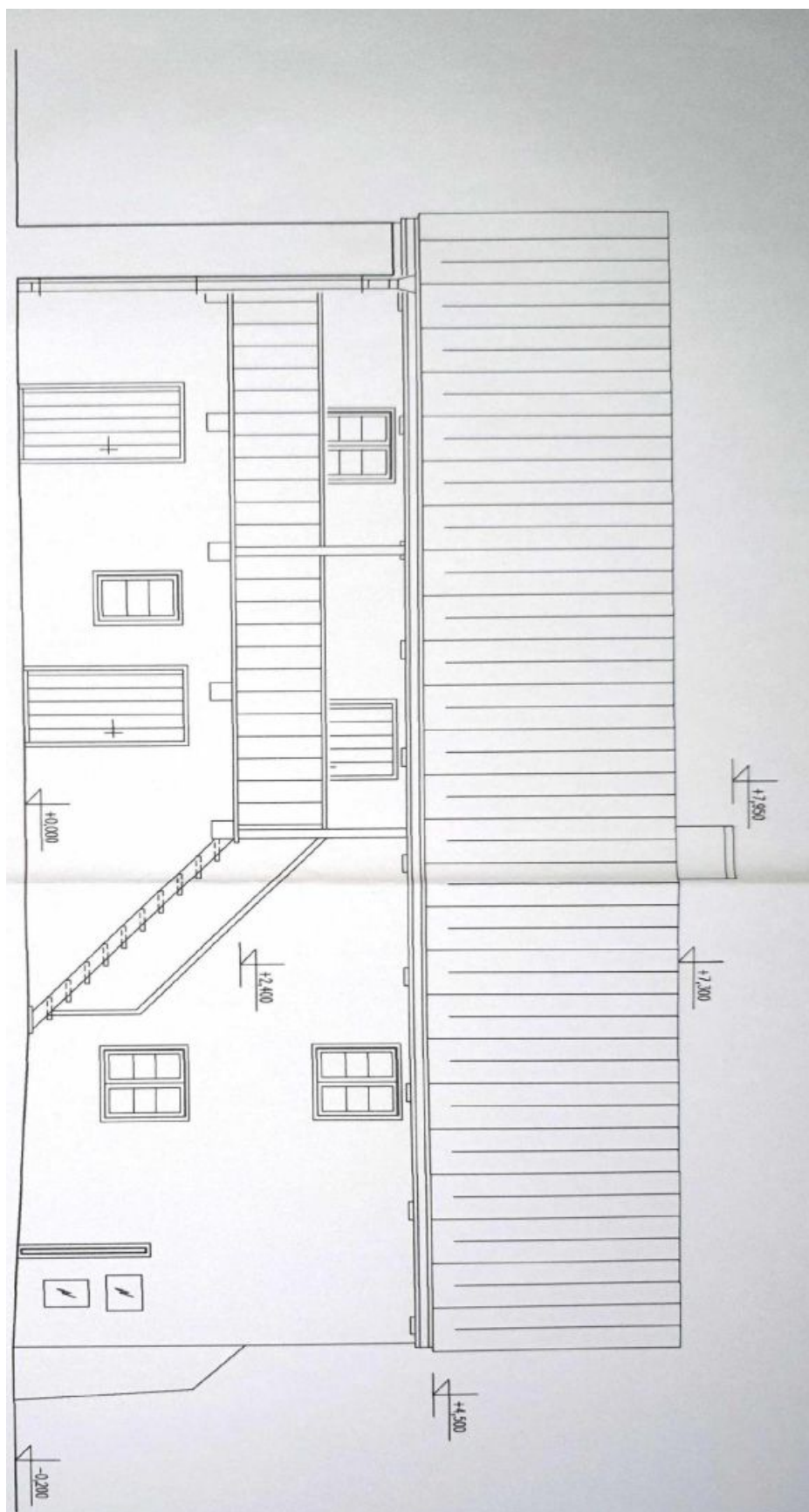




# Farmhouse estate Three-bedroom (4+kk)

€ 305 219 | CZK 7 690 000

Kladno, Třebíz





# Farmhouse estate Three-bedroom (4+kk)

€ 305 219 | CZK 7 690 000

Kladno, Třebíz

