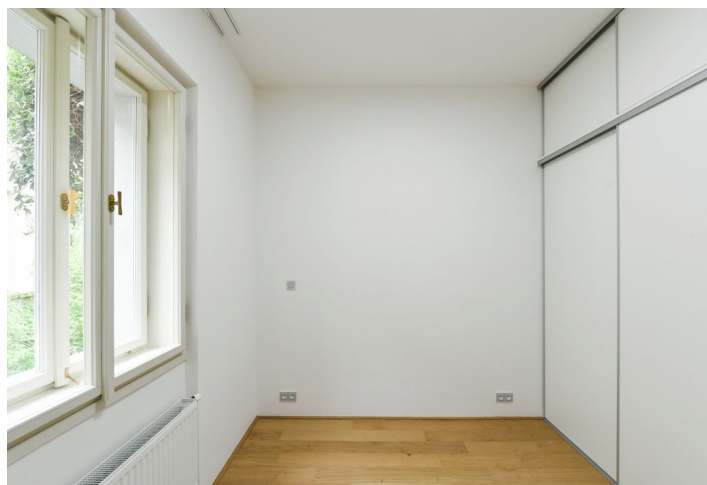




## Apartment One-bedroom (2+kk)

€ 813 | CZK 20 500

35 m<sup>2</sup>, Prague 3, Žižkov, Bořivojova





## Apartment One-bedroom (2+kk)

€ 813 | CZK 20 500

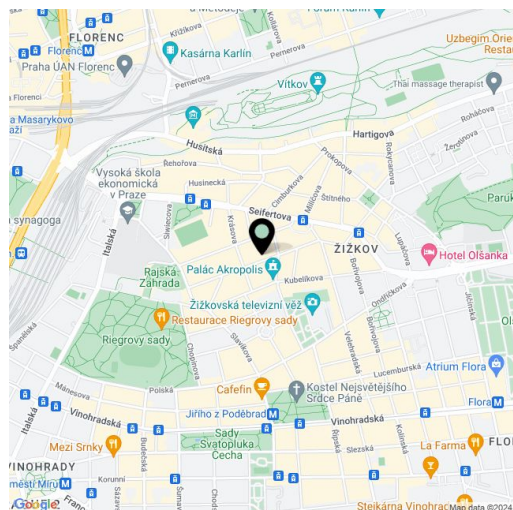
35 m<sup>2</sup>, Prague 3, Žižkov, Bořivojova

Total area	35 m <sup>2</sup>
Parking	-
Cellar	Yes
Service price	Monthly deposit for services, heating, and water CZK 3,000. Electricity - transferred to the tenant.
PENB	D
Reference number	42535
Available from	01.01.2025

This unfurnished apartment is on the 2nd floor of a refurbished traditional residential building with an elevator, on the edge of the Vinohrady neighborhood just minutes from Riegrovy Sady Park. A location with full amenities within easy reach, two short tram stops to the Hlavní nádraží metro station and within walking distance of the Jiřího z Poděbrad metro station. Rajska zahrada (the "Garden of Eden"), a multipurpose park with a beautiful garden and a children's playground, is also situated nearby.

The interior features a living room with a fully fitted open plan kitchen, a bedroom with built-in wardrobes, a bathroom with a bathtub and toilet, and an entrance hall.

**Wooden floating floors**, large-format tiles, security entry door, built-in wardrobes, central heating, washing machine/dryer, dishwasher, microwave oven, **cellar**.



\* Size of the unit according to the Housing Act.

The area consists of the sum total of the internal area of every room.