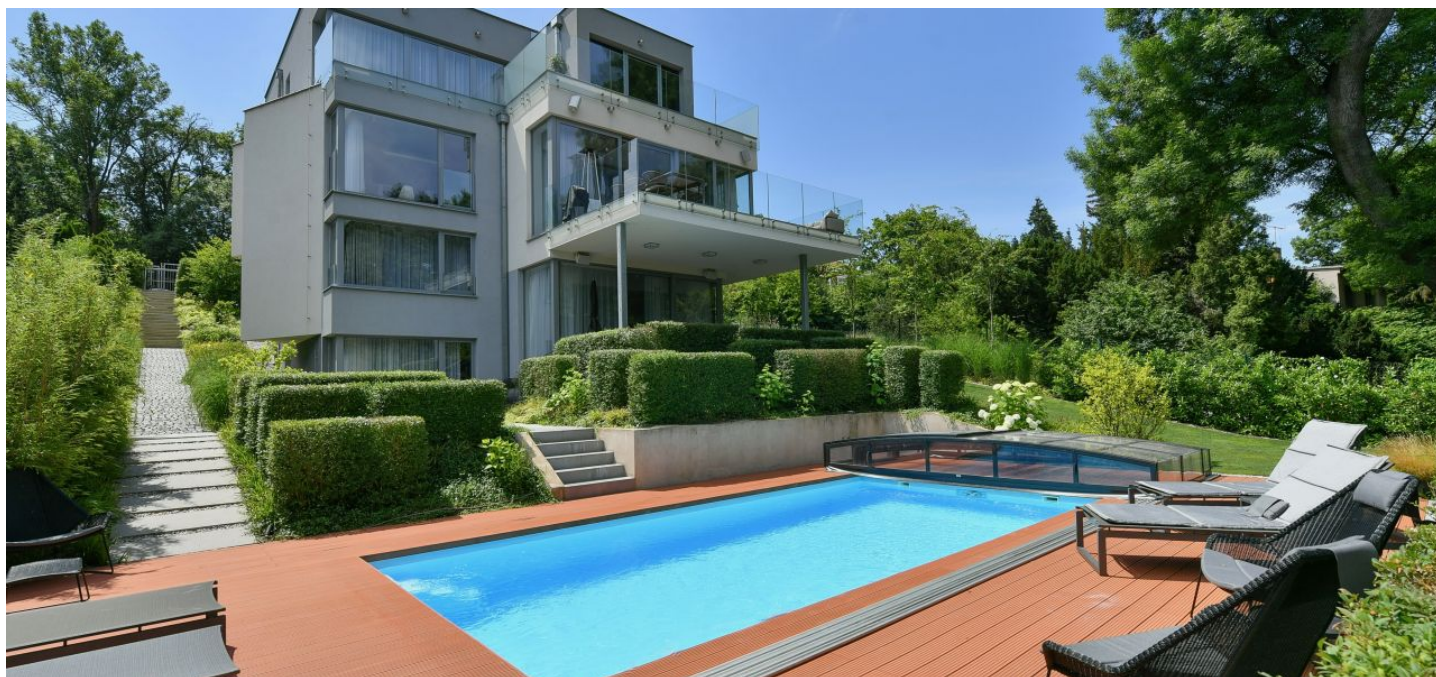




## House Seven-bedroom (8+1)

Sold

600 m<sup>2</sup>, Prague 6, Dejvice





## House Seven-bedroom (8+1)

**Sold**600 m<sup>2</sup>, Prague 6, Dejvice

Plot	1 148 m <sup>2</sup>
Foot print	167 m <sup>2</sup>
Garden	981 m <sup>2</sup>
Parking	Garage for 2 cars + 2 outdoor spaces
Garage	Yes
Cellar	-
PENB	A
Reference number	42618

This luxurious air-conditioned villa with an outdoor pool and a large landscaped garden offers ultra comfortable living in the middle of a nature park, yet within quick reach of international schools or the airport. A unique location by a forest in the beautiful environment of the Šárecké Valley offers unobstructed views of the garden and a mature leafy forest. The fabulously equipped villa is also suitable for multi-generational living or for a large family with a nanny.

The interior, full of daylight, offers a total of **7 bedrooms** with **en-suite bathrooms**, one of which is a master bedroom with a **walk-in closet**, an interestingly designed asymmetrical kitchen, a living room with a **sliding glass wall** that opens onto the **terrace**, and a common room with a kitchen connected to the **garden terrace**. The house is fully equipped with many facilities, including a laundry room with access to the garden.

The villa has been equipped with an eye to **elegance and high user comfort**. Facilities include aluminum French windows with **marble sills**, **wooden floors**, **large-format tiles**, a fitness room, an outdoor heated pool, a wood-burning fireplace, **air-conditioning** throughout, a kitchen with **Bosch** appliances (gas stove), a **Klipsch sound system** in the living room and on the terraces (controlled by mobile phone), a TV connection and Wi-Fi in all rooms, an **automatic garden irrigation system**, and a preparation for security equipment with a connection to a central station. Parking is available in a **double garage** connected to the house and on 2 outdoor parking spaces. The garden is lined with **mature trees**. The approval of the house was in 2017.

Living here is pleasant thanks to the healthy surrounding greenery and many possibilities for walks or bike trips in the **Šárka-Lysolaje Nature Park**. The Global Concept Montessori School, the **prestigious ISP International School**, and the **Riverside School** are all nearby. This unique natural location provides a **peaceful environment**, **privacy**, and **relaxing views** of the greenery. You can quickly get to the city center and to the airport, and a bus will take you to the Bořislavka or Dejvická metro stations (line A).

Usable area approximately 600 m<sup>2</sup>, built-up area 167 m<sup>2</sup>, garden 981 m<sup>2</sup>, plot 1,148 m<sup>2</sup>.

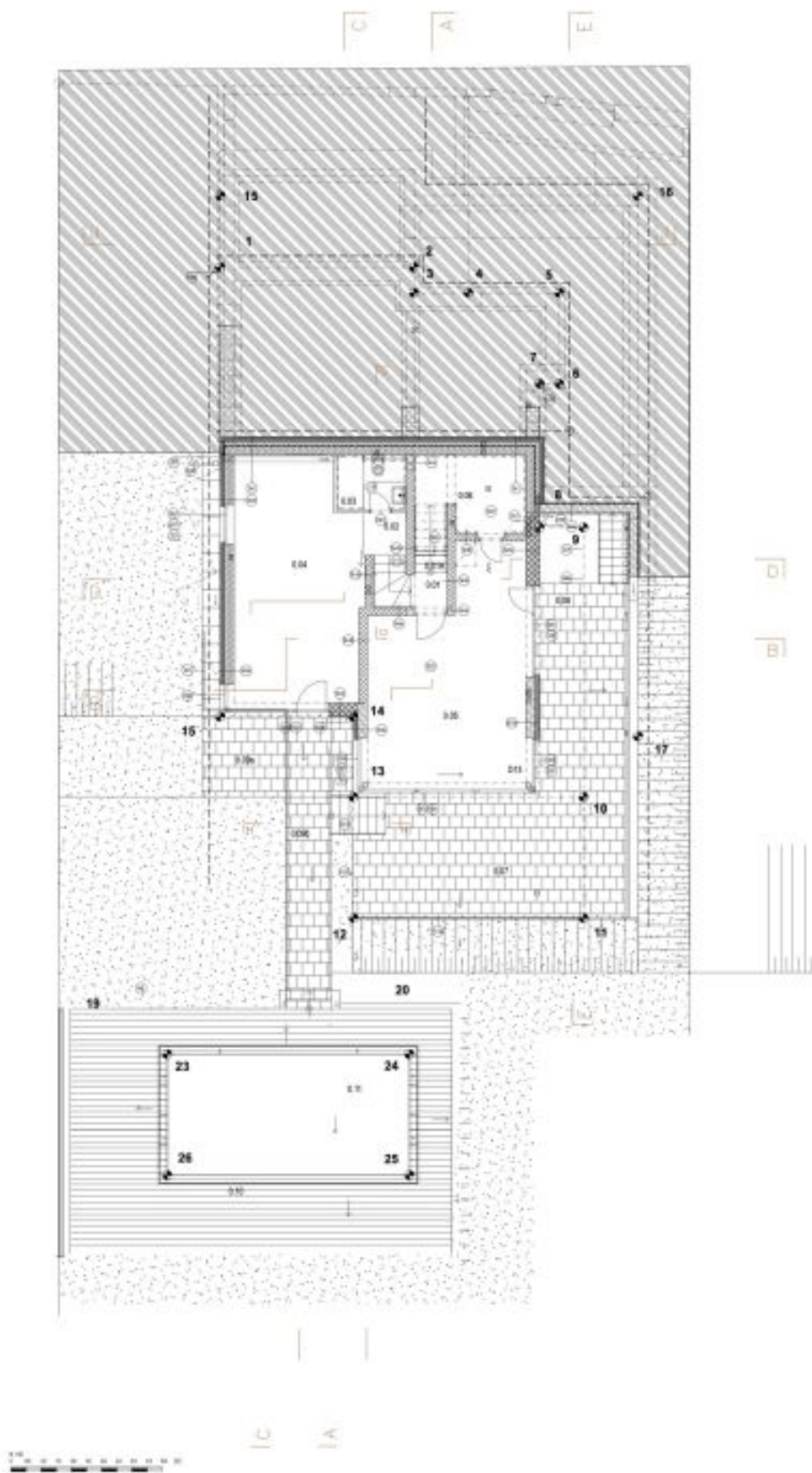
In addition to regular property viewings, we also offer real-time video viewings via WhatsApp, FaceTime, Messenger, Skype, and other apps.



# House Seven-bedroom (8+1)

600 m<sup>2</sup>, Prague 6, Dejvice

**Sold**

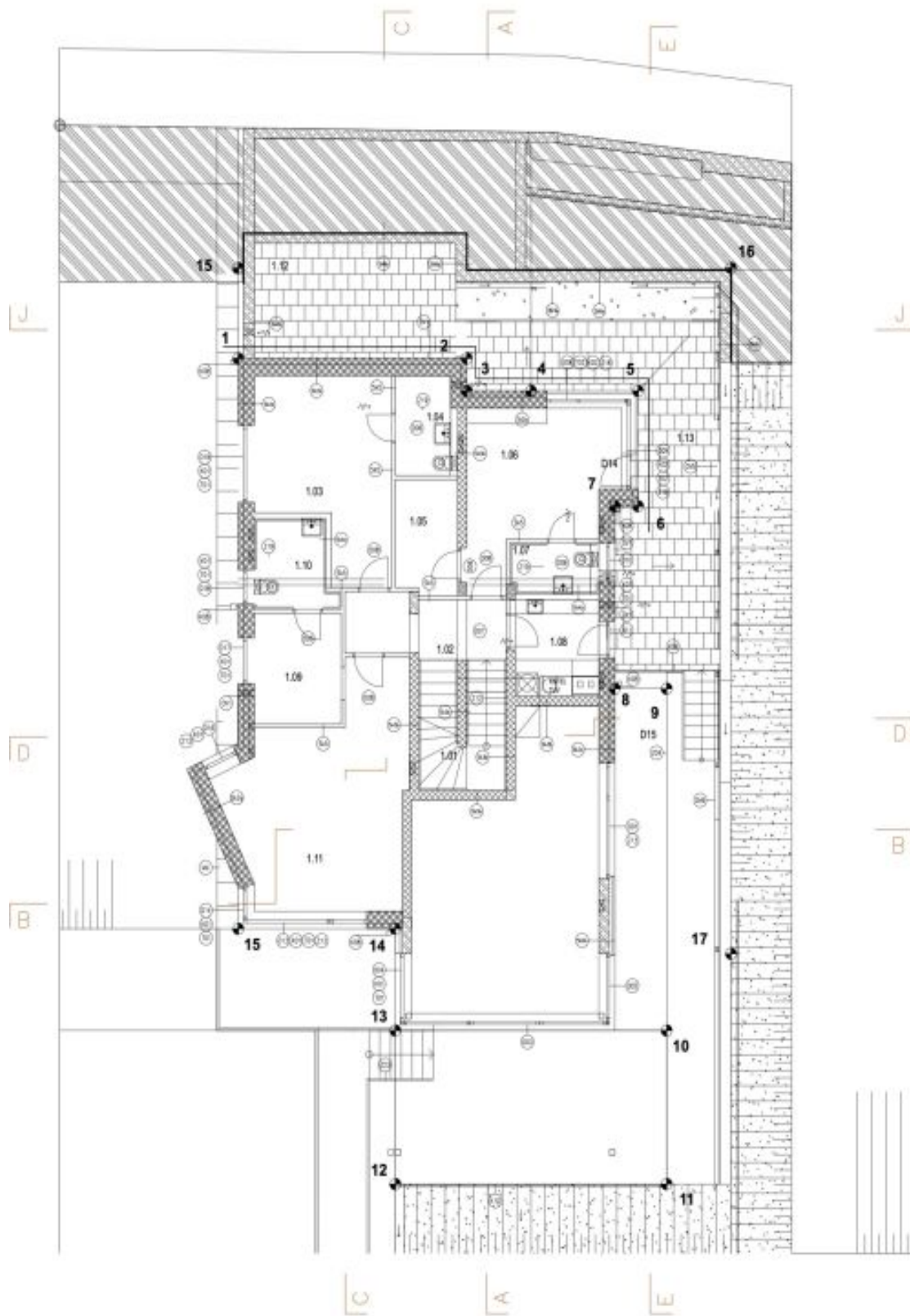




# House Seven-bedroom (8+1)

600 m<sup>2</sup>, Prague 6, Dejvice

Sold

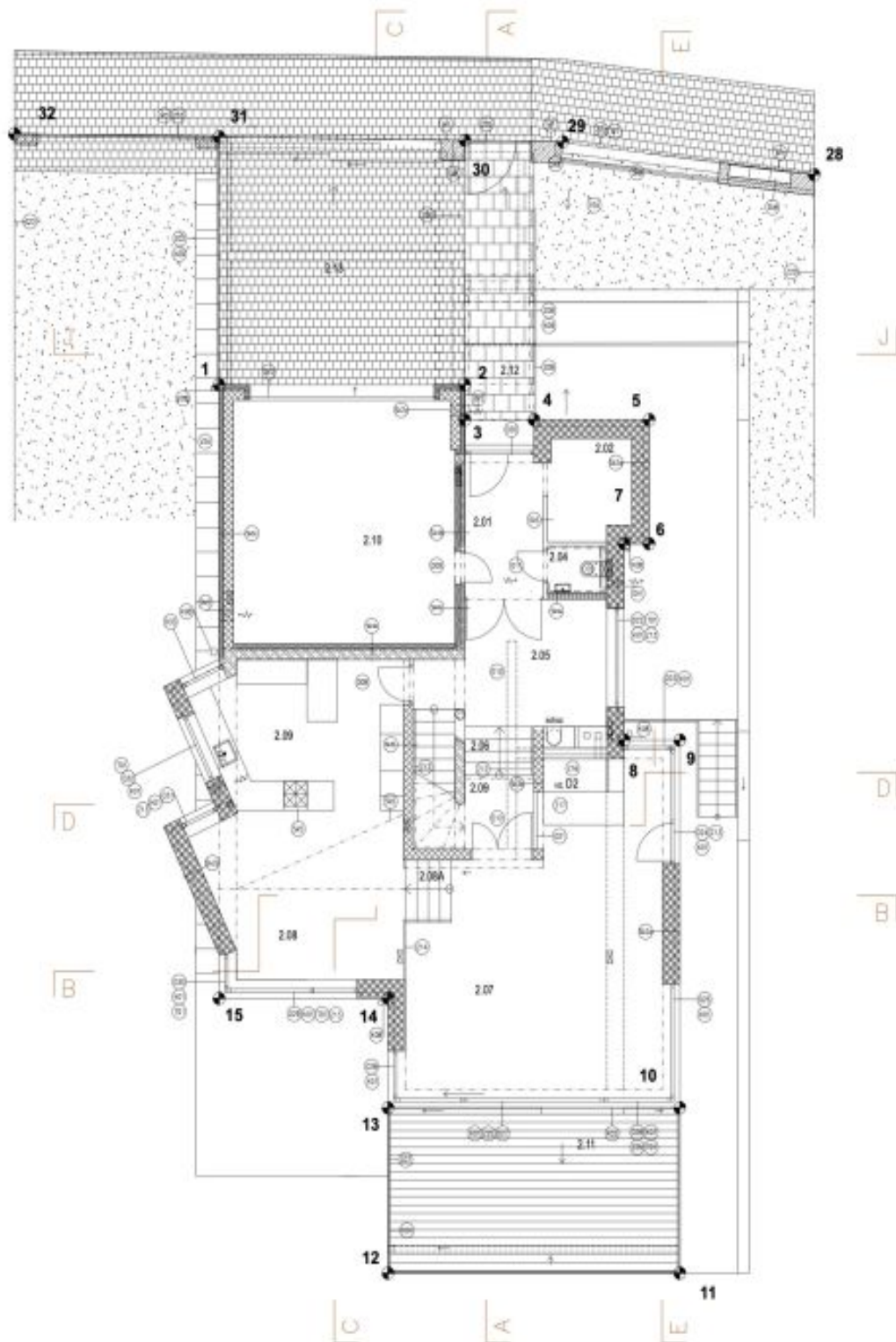




# House Seven-bedroom (8+1)

600 m<sup>2</sup>, Prague 6, Dejvice

Sold

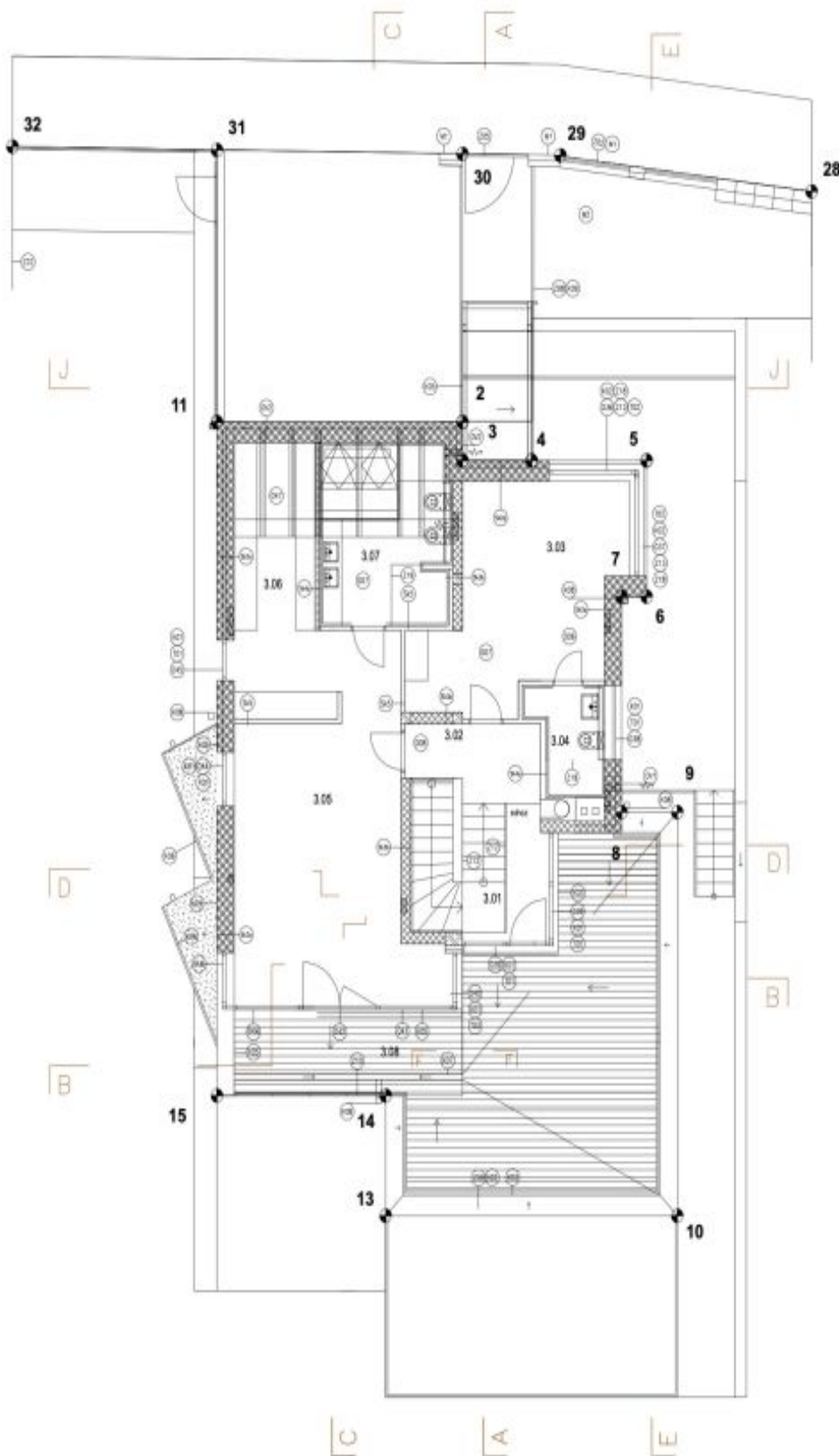




# House Seven-bedroom (8+1)

600 m<sup>2</sup>, Prague 6, Dejvice

**Sold**





# House Seven-bedroom (8+1)

600 m<sup>2</sup>, Prague 6, Dejvice

Sold

