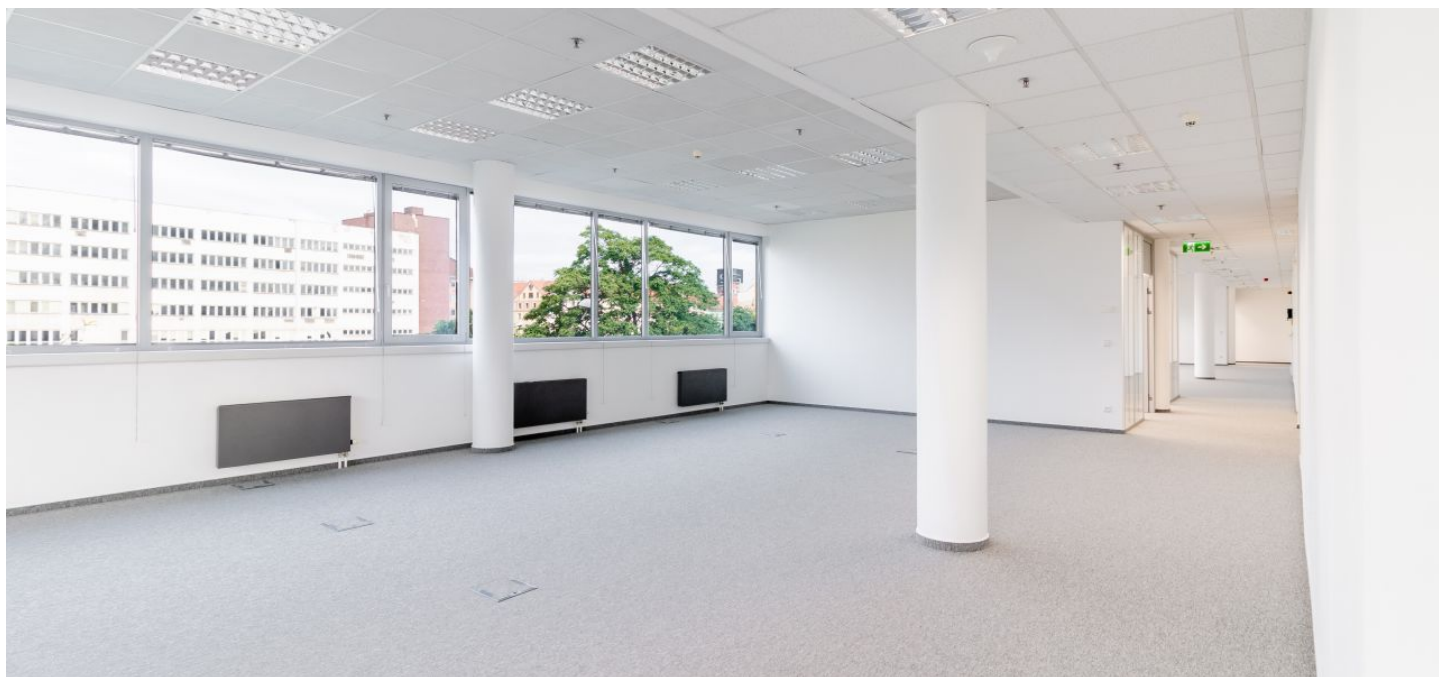




Office space

Prague 7, Holešovice, Jankovcova

€ 15.50 / m² | CZK 389 / m²



**Office space**

Prague 7, Holešovice, Jankovcova

€ 15.50 / m² | CZK 389 / m²

Service price	135 CZK monthly per m ²
Available area	493 m ²
Cellar	-
Parking	EUR 140 / ps / month
PENB	B
Reference number	42635

Class A office premises for lease on the 3rd floor of an administrative building situated right behind Vltava River in Prague 7 – Holešovice.

Location:

Good accessibility by public transportation and car – close to the metro stations Vltavská (line C) and Palmovka (line B), tram stops (Dělnická or Maniny) are few minutes walk. Number of primary transportation routes, including access to the D1 and D8 (Berlin) highways.

Features and Services:

- Central reception
- 24-hour security service
- Air-conditioning
- CCTV
- Modern elevators
- Carpets and tiles on the floors
- Storage space
- Underground garage parking
- Restaurant and café

Rental and service charges listed without VAT. Lessee pays no commission.

