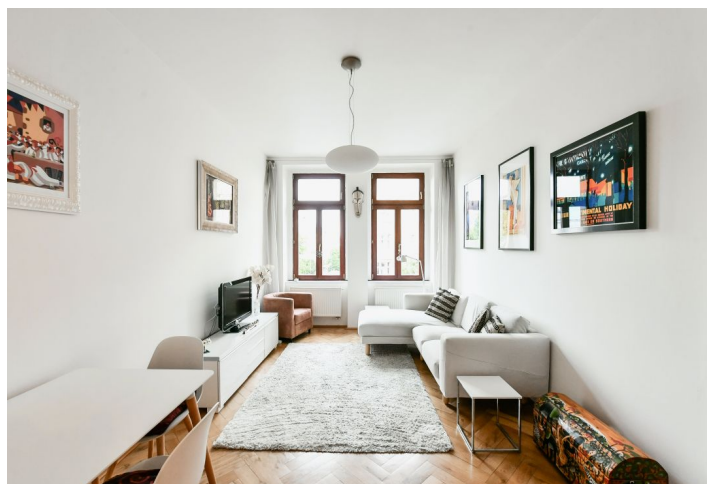




## Apartment One-bedroom (2+kk)

€ 1 186 | CZK 30 000

58 m<sup>2</sup>, Prague 7, Bubeneč, Ovenceká





## Apartment One-bedroom (2+kk)

€ 1 186 | CZK 30 000

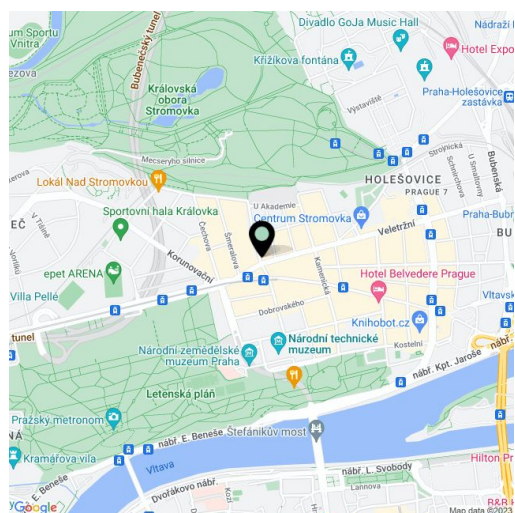
58 m<sup>2</sup>, Prague 7, Bubeneč, Ovenceká

Total area	63 m <sup>2</sup>
Floor area*	58 m <sup>2</sup>
Balcony	5 m <sup>2</sup>
Parking	-
Cellar	-
Service price	Monthly deposit for services and water CZK 1,400 for one person + CZK 500 other person. Gas and electricity - transferred to the tenant.
PENB	G
Reference number	42672
Available from	10.02.2025

Boasting immediate access to Stromovka Park, this furnished renovated apartment with a terrace is on the 2nd floor of a well-maintained residential building with an elevator. Located on a quiet street just a minute's walk from Letenské Square with full amenities in the area and a few tram stops away from the Vltavská and Hradčanská metro stations. You can walk to the city center in 20 minutes and even closer is Letná Park and the Prague Castle. Quick connections to the airport and numerous international schools.

The apartment consists of a living room with a fully fitted open plan kitchen and dining area, a bedroom with a small terrace facing a quiet green courtyard, a bathroom (bathtub, bidet, toilet), and an entrance hall with built-in wardrobes.

Hardwood parquet floors, tiles, gas boiler, washing machine, dishwasher.



\* Size of the unit according to the Housing Act.  
The area consists of the sum total of the internal area of every room.