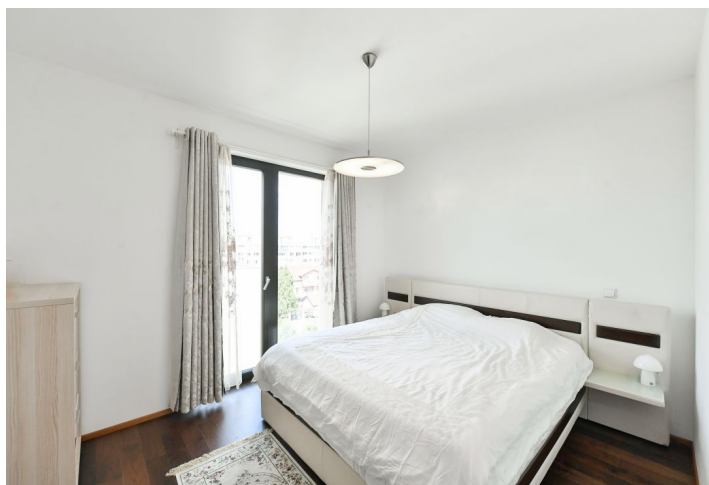
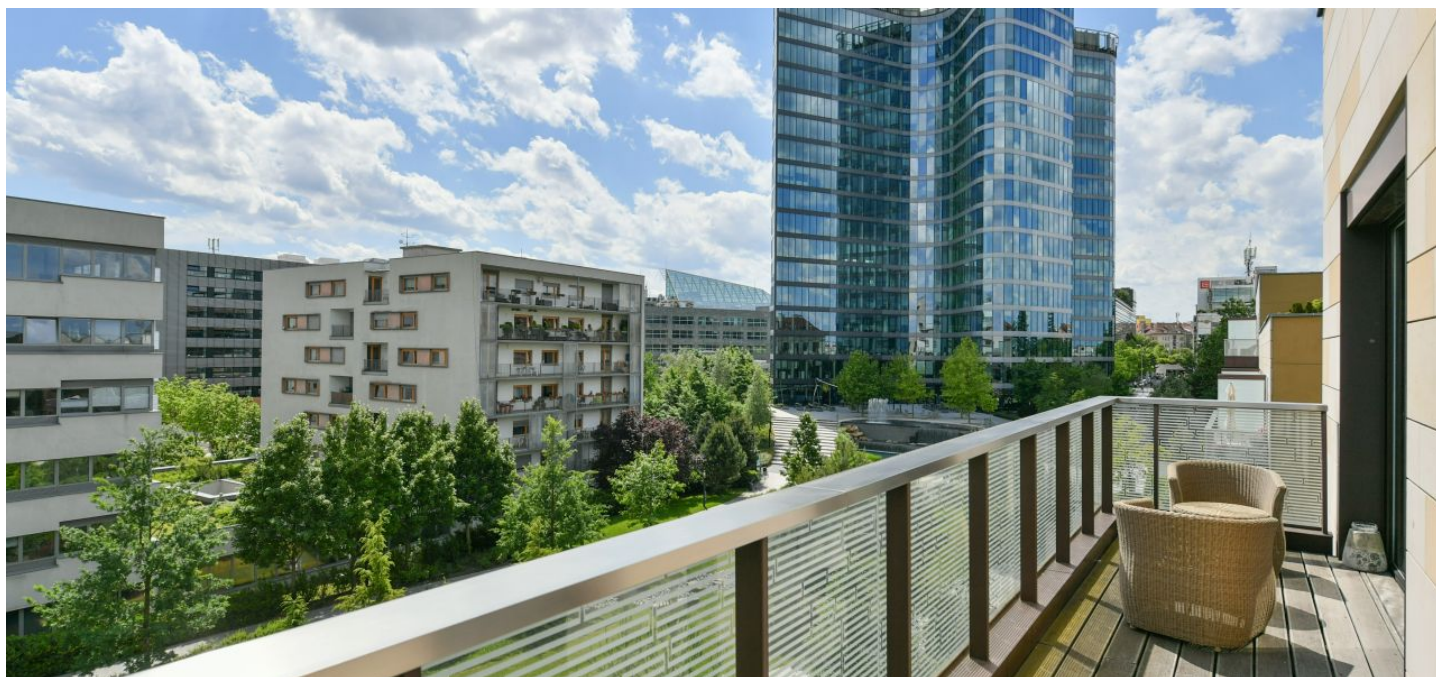




Apartment Three-bedroom (4+kk)

Rented

100.8 m², Prague 4, Michle, Baarova





Apartment Three-bedroom (4+kk)

Rented

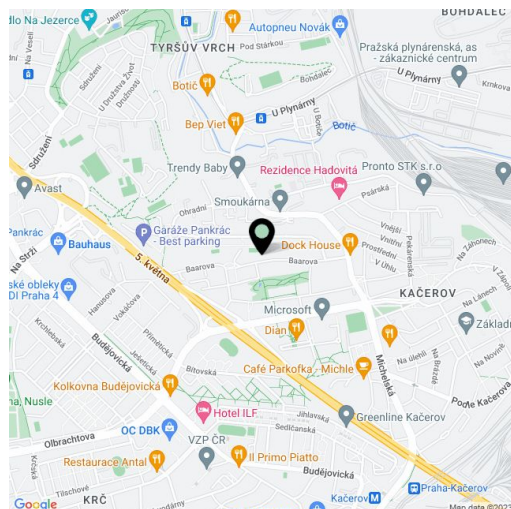
100.8 m², Prague 4, Michle, Baarova

Total area	111 m ²
Floor area*	101 m ²
Balcony	10 m ²
Parking	Two garage parking spaces.
Garage	Yes
Cellar	-
PENB	G
Reference number	42732
Available from	Immediately

This south-facing, furnished 3-bedroom 2-bathroom apartment with a balcony and green views is on the topmost 4th floor of the recently built Residential Park Baarova complex with a 24/7 reception and security, a park, a children's playground, and underground parking. The residence is located in an area offering a full range of amenities, near the BB Centrum and Brumlovka multipurpose centers, with bus connections to the Budějovická and Pankrác metro stations and quick access to the city center.

The interior features a living room with a fully fitted open plan kitchen and balcony access, two bedrooms, a study/third bedroom, plus a bathroom (walk-in shower, toilet), a second bathroom (bathtub, bidet, toilet), and an entrance hall with built-in wardrobes.

Hardwood floors, tiles, security entry door, ample storage space, exterior blinds, washing machine, dishwasher, induction cooktop, microwave oven, lift, chip entry to the building, bike and pram storage. **Two garage parking spaces** are included. Monthly deposit for service charges, water, and heating: CZK 7,500. Electricity is billed separately.



* Area of the unit according to the Civil Code. The area consists of the sum total area of the entire unit bounded by perimeter walls.