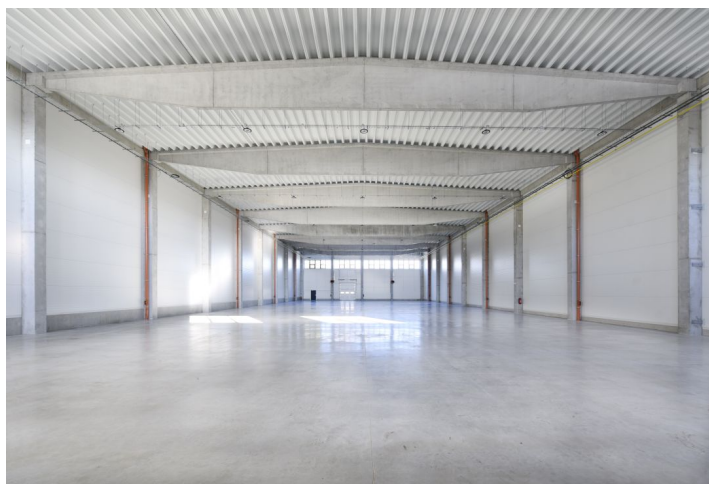




## Warehouse space

1 481 m<sup>2</sup>, Vyškov, Rousínov, Tománkova

Rented





## Warehouse space

1 481 m<sup>2</sup>, Vyškov, Rousínov, Tománkova

Rented

Service price	1 EUR monthly per m <sup>2</sup>
Total area	1 481 m <sup>2</sup>
Available area for rent	1 481 m <sup>2</sup>
Ceiling height	9.8 m
Floor loading capacity	10 t/m <sup>2</sup>
Column grid structure	—
Structure	Reinforced concrete structure
PENB	G
Reference number	42997

**1,481 sq.m.** of warehouse, industrial and office space for lease in the industrial area situated close to Brno. Premises are suitable for light industry, logistics and business activity.

### Location:

The park is located in Rousínov, about 20 km east of Brno, close to the D1 highway.

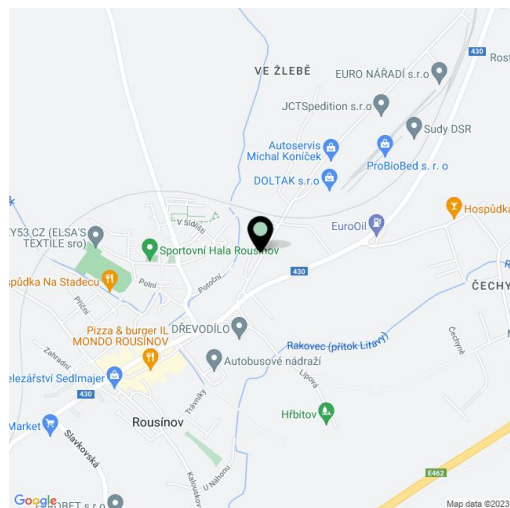
### Features and Services:

- New wiring and lighting
- Gas heating
- Clear height 9,8 m
- Floor loading capacity 10 t / m<sup>2</sup>
- Loading ramps
- Handling area
- Possibility of direct entrance for vans
- 4 sectional doors
- Parking for trucks
- Parking for cars

### Office:

Variable space

Lessee pays no commission.

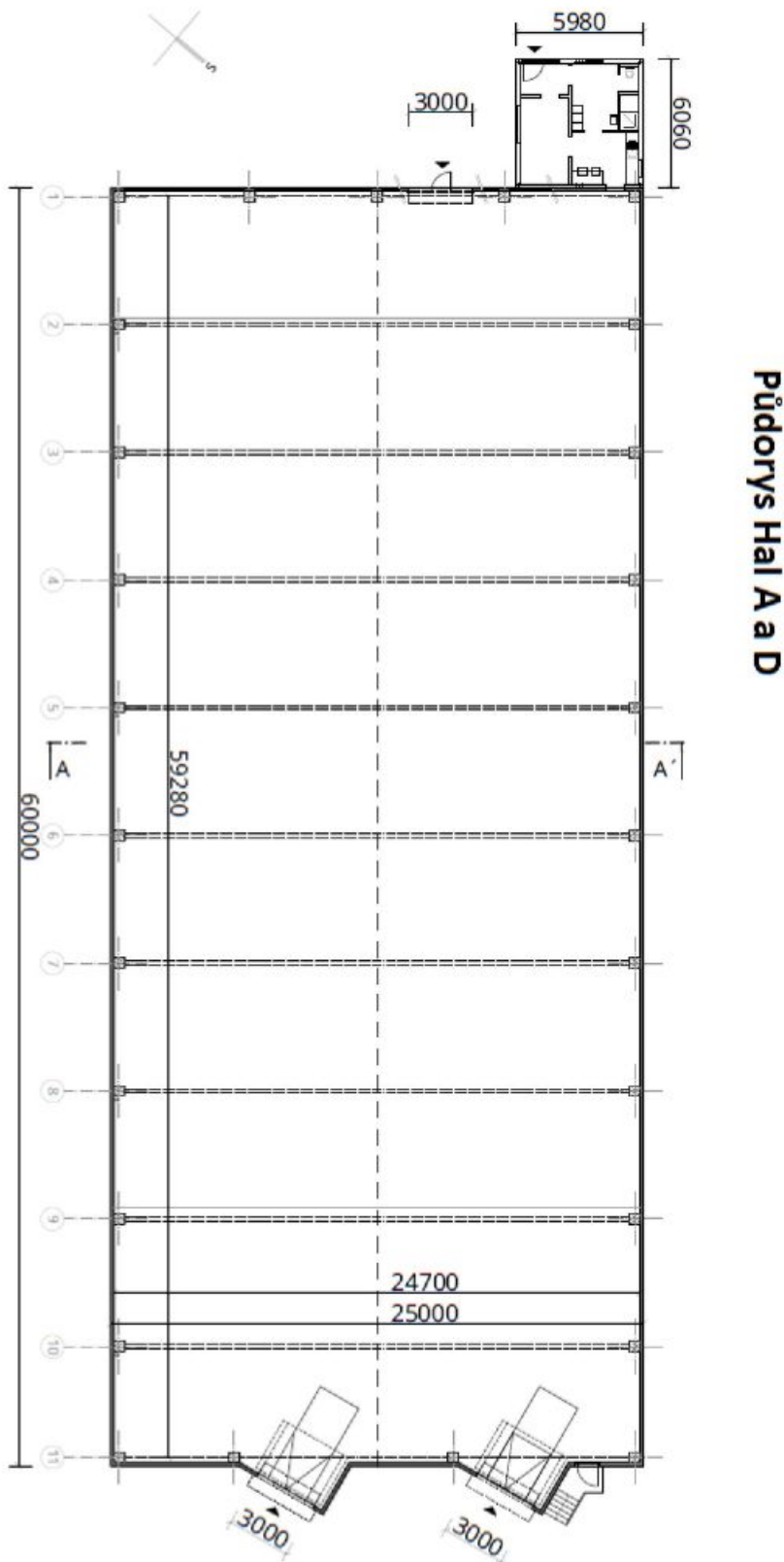




## Warehouse space

1 481 m<sup>2</sup>, Vyškov, Rousínov, Tománkova

Rented

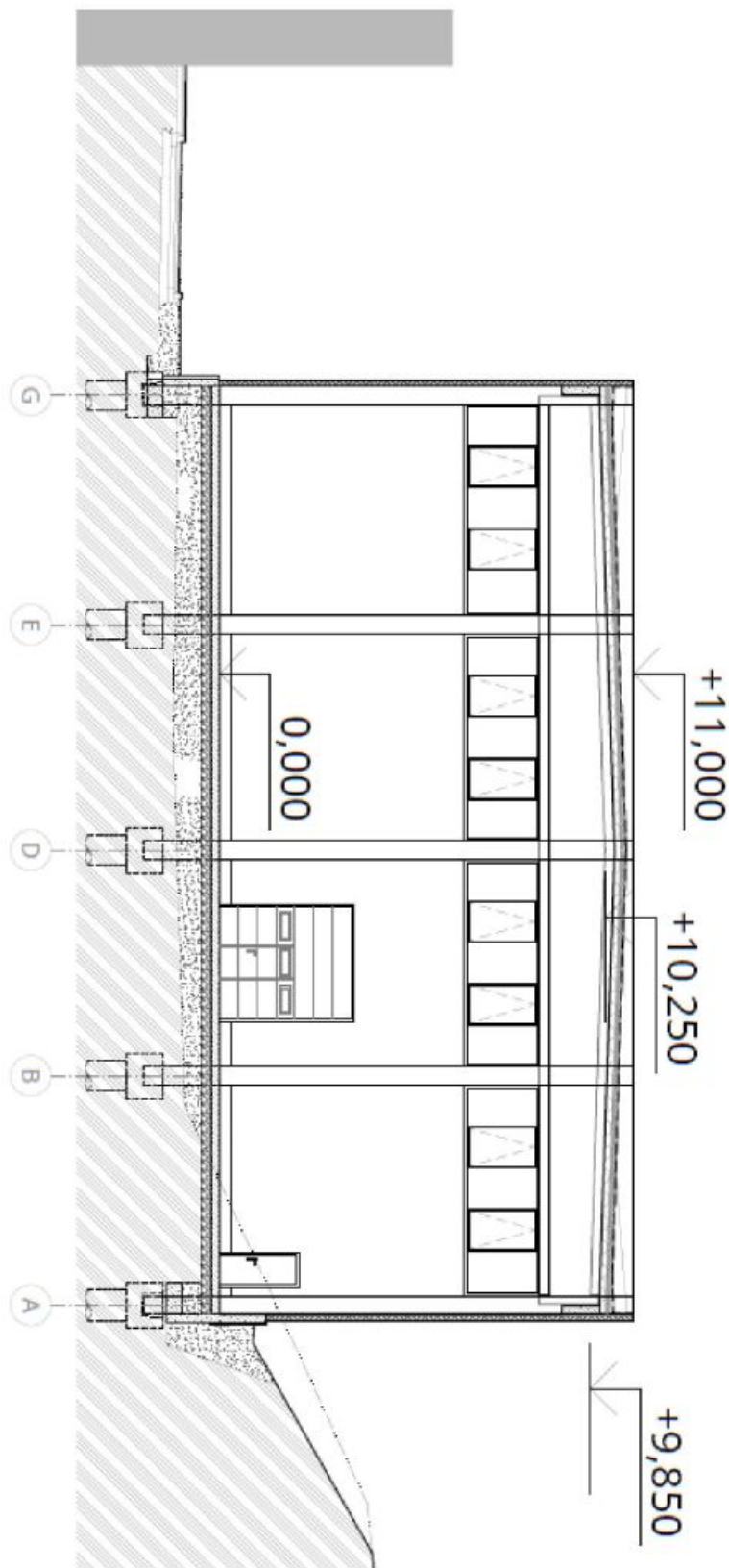




# Warehouse space

1 481 m<sup>2</sup>, Vyškov, Rousínov, Tománkova

Rented



Řez Hal A, B, C, D