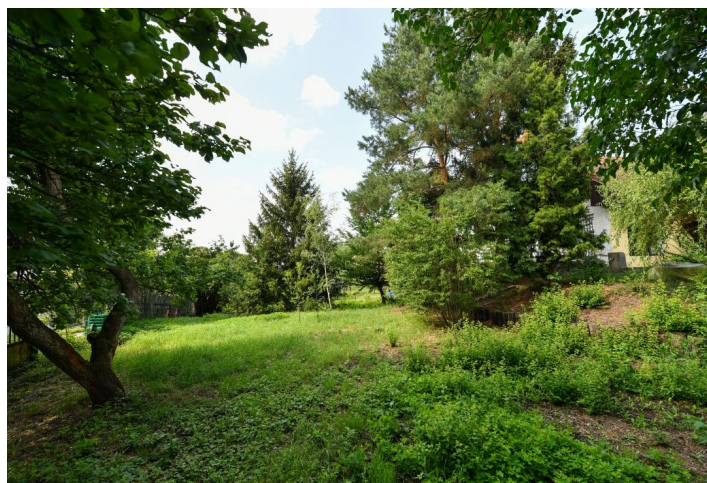




Land

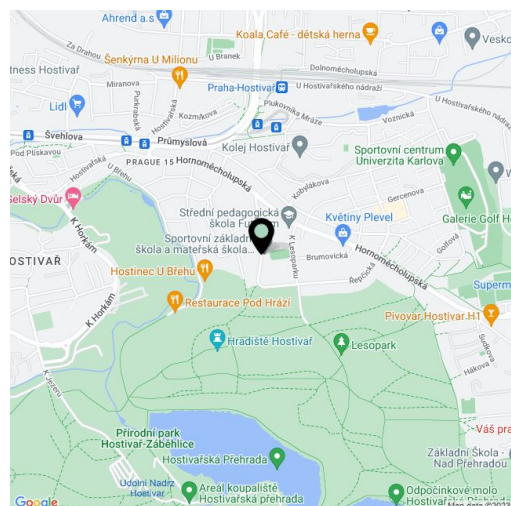
1 713 m², Praha 10, Hostivař, Kunická

Sold





Price per sq. m.	20 374 CZK
Total area	1 713 m ²
Land type	Housing
Reference number	43067



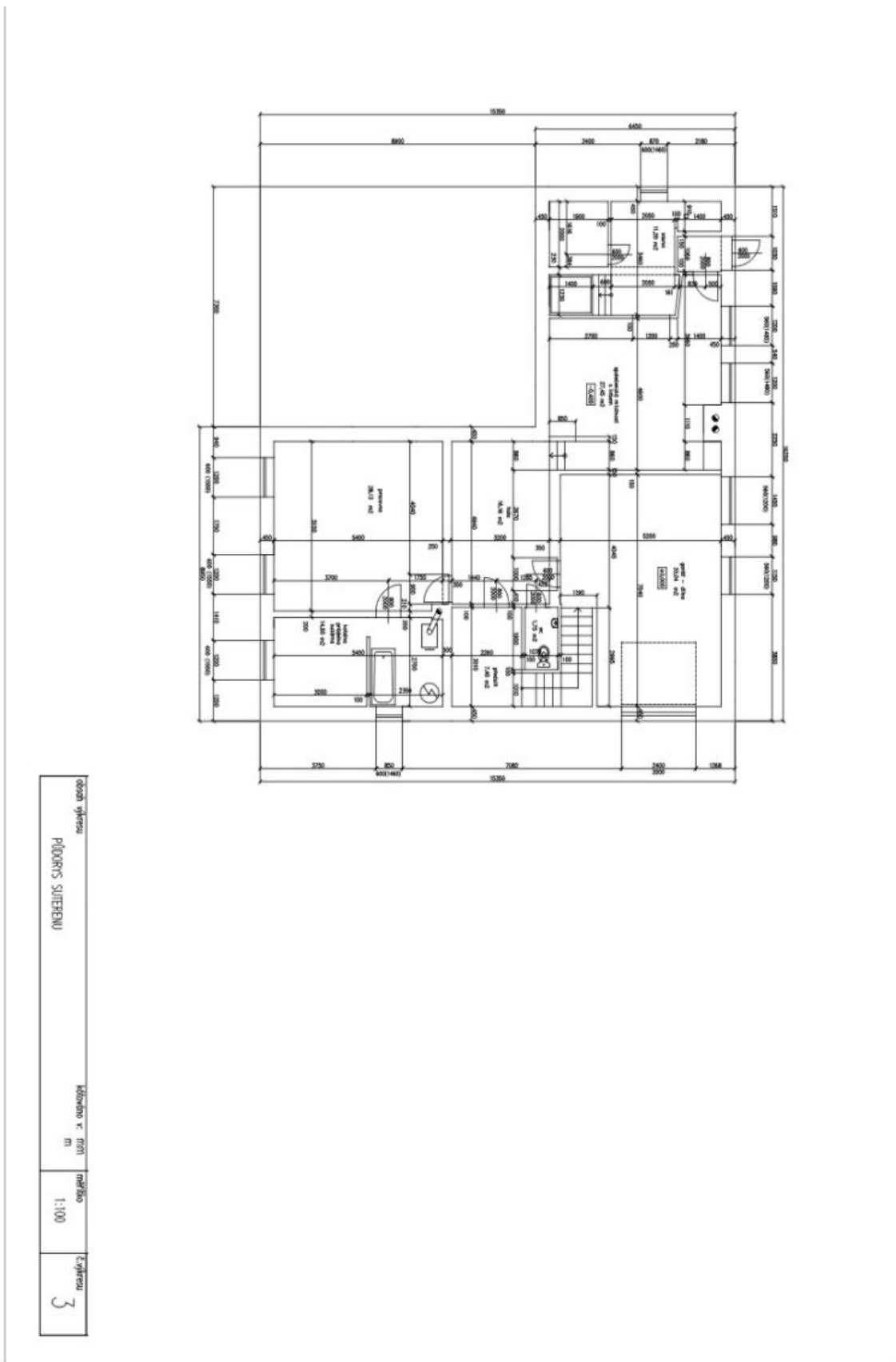
This large southwest-facing buildable plot of land, lined with mature trees guaranteeing perfect privacy, is located in a beautiful place with plenty of greenery, right next to the Hostivař Forest Park and within easy reach of all services.

There are **utility network connections** (gas, electricity, water) on the plot and a sewerage system that can be connected to the property. Easy access to the plot is possible from two sides, from the east side along a lit asphalt road with a sidewalk and from the west side from a cul-de-sac.

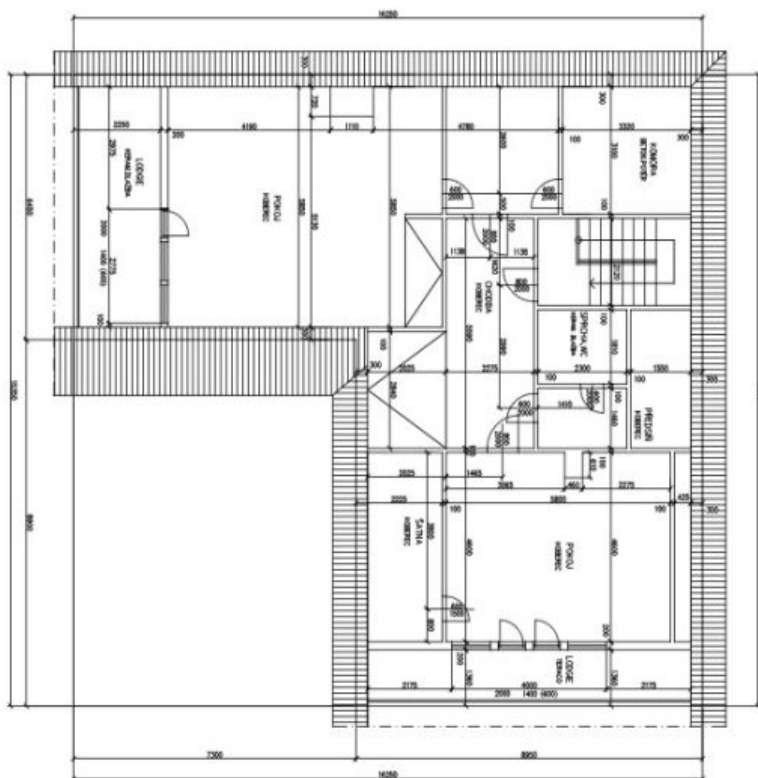
Currently, there is a **family house** for complete reconstruction or demolition. The ground floor now consists of a living room, a kitchen, 2 bedrooms, a bathroom, a separate toilet, a closet, and a foyer. In the attic, there are 2 rooms, both with a loggia, a dressing room, a closet, a bathroom, and a corridor. This level offers **very pleasant views**. The basement contains a common room with a fireplace, a study, **a sauna with a cooling pool**, a bathroom, a toilet, and a garage with a workshop. The size and location of the plot of land allows for the **construction of two family houses**.

The plot has an ideal location right next to the **Hostivař-Záběhlice Nature Park**. There is a kindergarten and an elementary school in the immediate vicinity, and it is possible to get to the **Hostivař Dam** on foot or by bike. Within a short driving distance, there is a shopping center, a supermarket, or a sports complex with **tennis courts and a golf club**. The Skalka metro station can be reached by bus from a nearby stop, and a tram stop and train station with direct and frequent connections to the Main Railway Station are about a 15-minute walk away. By car, you can easily drive to the Southern Junction and the D1 highway.

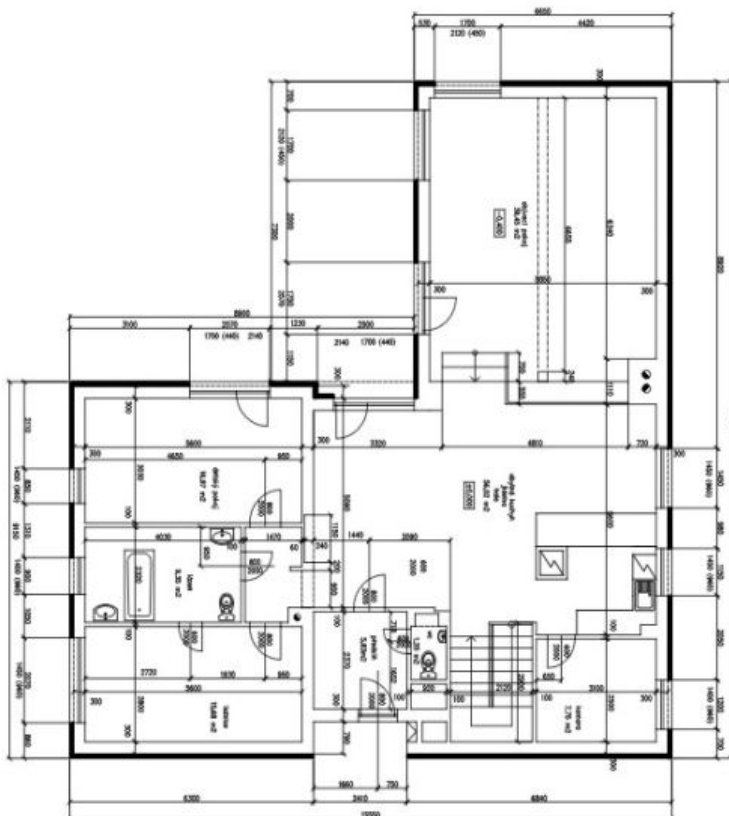
Total area 1,713 m².



00000 01/2024
 PLOŠNÝ STŘEŠENÍ
 Kótovaná v. čm
 m
 měřítko
 1:100
 č. přílohy
 3



období výkresu	ukázkovo k. č. 1111	měřítko	č. výkresu
PLOŠEŘS POUKROVÍ	m	1:100	5



osobní výřez	úroveň v. 1111	měřítko	č. výřezu
PŮDORŇS PŘÍZEMÍ		1:100	4