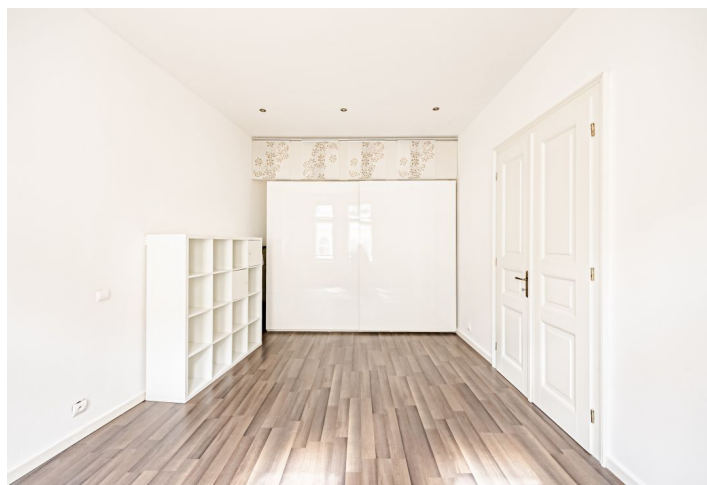
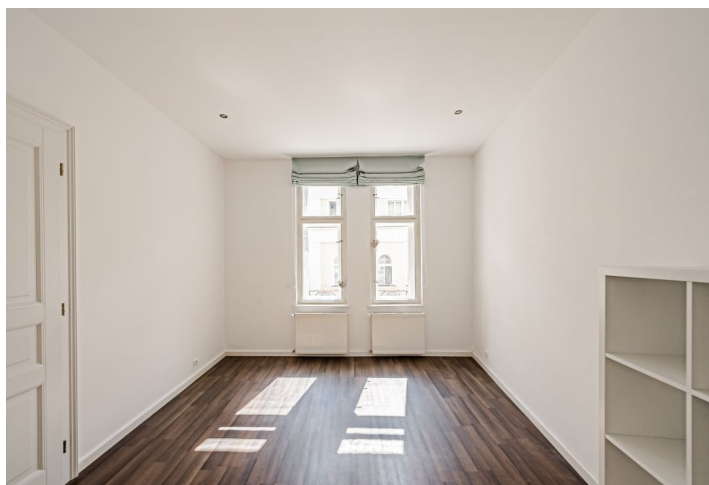




Apartment Two-bedroom (3+kk)

Rented

88 m², Prague 2, Vinohrady, Varšavská





Apartment Two-bedroom (3+kk)

Rented

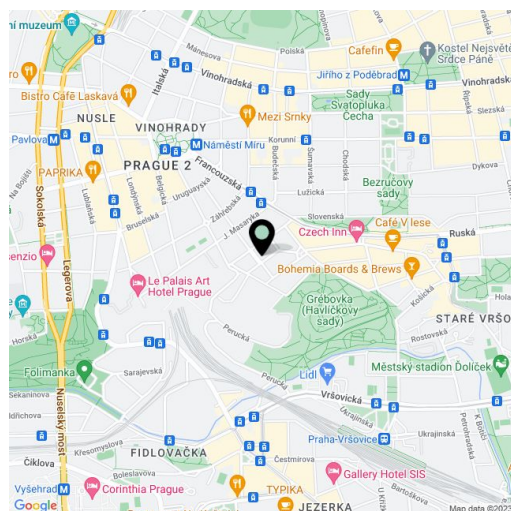
88 m², Prague 2, Vinohrady, Varšavská

Total area	88 m ²
Parking	-
Cellar	-
Service price	Deposit for services and utilities CZK 5,500/month.
PENB	G
Reference number	43157
Available from	Immediately

This furnished renovated apartment is on the third floor of a well-maintained renovated traditional building with no elevator and a backyard with mature trees. Wonderfully located in a residential neighborhood of tree-lined streets and parks, sidewalk cafes, restaurants, bars, etc. with a great atmosphere and Havlíčkovy Sady Park just down the street. Situated only a few min. walk from Náměstí Míru Square with a metro station and multiple tram links, only a short walk to the city center.

The interior features a living room, an entrance hall with a fully fitted kitchen, two bedrooms, a bathroom including a bathtub, and a separate toilet.

Laminate floating floors, tiles, washing machine, dryer, dishwasher, induction cooktop, microwave oven, TV.



* Size of the unit according to the Housing Act.

The area consists of the sum total of the internal area of every room.