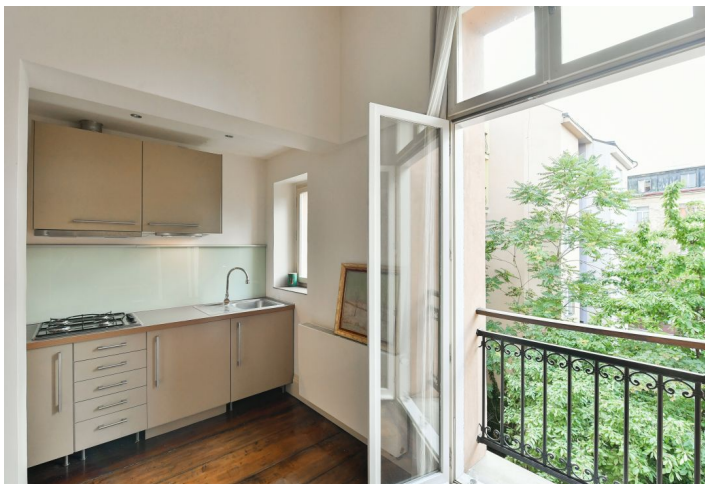




Apartment One-bedroom (2+kk)

€ 349 842 | CZK 8 300 000

38 m², Prague 2, Vinohrady, Varšavská





Apartment One-bedroom (2+kk)

€ 349 842 | CZK 8 300 000

38 m², Prague 2, Vinohrady, Varšavská

Total area	38 m ²
PENB	G
Reference number	43208

This quiet apartment with a clever layout and wonderful views of treetops is located on the 3rd floor of an elegant historic apartment building in an attractive part of Vinohrady, near náměstí Míru Square and Grébovka Park. The subject of the sale is a 100% business share in the company that owns the unit.

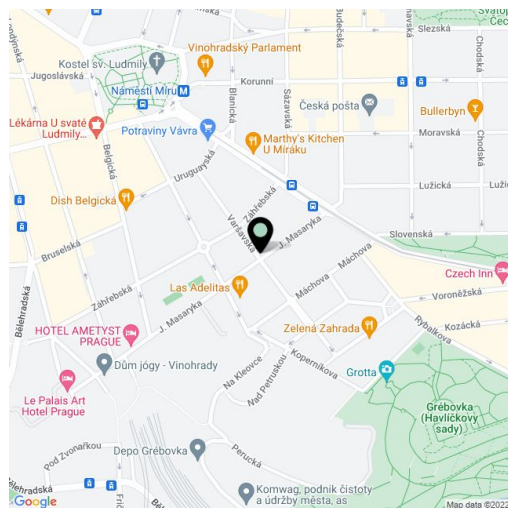
The apartment consists of a bedroom, a living room with a **French window** towards the courtyard, a kitchen, a bathroom (shower, toilet, sink with a cabinet), a utility room, and a foyer.

The dark-stained **hardwood plank floors** and original **double doors** create a cozy atmosphere in the apartment. Plenty of storage space is provided in the suspended ceilings above the bathroom and kitchen. Gas boiler heating.

This corner apartment building is located in an upscale, sought-after neighborhood near an **iconic fountain**, just a few steps from a tram stop and about a 5 minutes' walk from the Náměstí Míru metro station. The place is full of cafes with outdoor seating, quality restaurants, and theaters. It is also close to **romantic Grébovka Park**.

Interior 37.8 m².

In addition to regular property viewings, we also offer real-time video viewings via WhatsApp, FaceTime, Messenger, Skype, and other apps.





Apartment One-bedroom (2+kk)

€ 349 842 | CZK 8 300 000

38 m², Prague 2, Vinohrady, Varšavská

