



Apartment Four-bedroom (5+kk)

Rented

151 m², Prague 4, Podolí, Na Hřebenech I





Apartment Four-bedroom (5+kk)

Rented

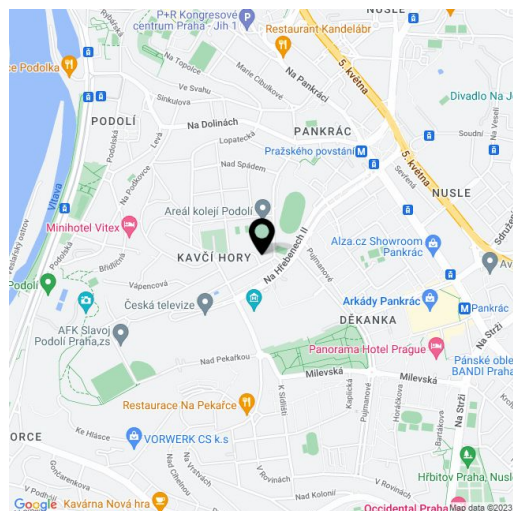
151 m², Prague 4, Podolí, Na Hřebenech I

Total area	168 m ²
Floor area*	151 m ²
Loggia	17 m ²
Parking	Three garage parking spaces.
Garage	Yes
Cellar	Yes
PENB	B
Reference number	43262
Available from	Immediately

Benefiting from 2 enclosed balconies, this exceptional air-conditioned 4-bedroom 2-bathroom apartment boasts far-reaching views. Situated on the entire second floor of the boutique Castle View Residence with an elevator, a reception, 24/7 security, and underground parking. The residence is set in a quiet green residential area near the Czech TV headquarters and Pankrác Central Park. The impassable street lined with greenery guarantees peace and quiet, and good amenities are available nearby. The Pražského povstání metro station is about a ten-minute walk away, and the Arkády Pankrác shopping center is within walking distance. The ride to the city center takes just a few minutes, and you can easily drive to several international schools in Prague 4.

The interior offers a large living room connected to a fully fitted open plan kitchen, a dining area, and enclosed balconies, 3 bedrooms (one is a master suite with a dressing room), a guest bedroom, 2 bathrooms, a separate toilet, and an entrance hall. The living room offers views of the city including Prague Castle and Petřín Hill.

High-quality equipment, built-in wardrobes and storage, natural bleached oak floors, large-format aluminum windows with triple glazing and automatic exterior blinds, veneered interior doors, underfloor heating in the living room and bathrooms, air-conditioning, Siemens appliances, video entry phone, central gas heating, large cellar. Three garage parking spaces (including an above-standard one). Unfurnished despite the photos. Monthly deposit for service charges and utilities is billed separately.



* Area of the unit according to the Civil Code. The area consists of the sum total area of the entire unit bounded by perimeter walls.



Apartment Four-bedroom (5+kk)

Rented

151 m², Prague 4, Podolí, Na Hřebenech I

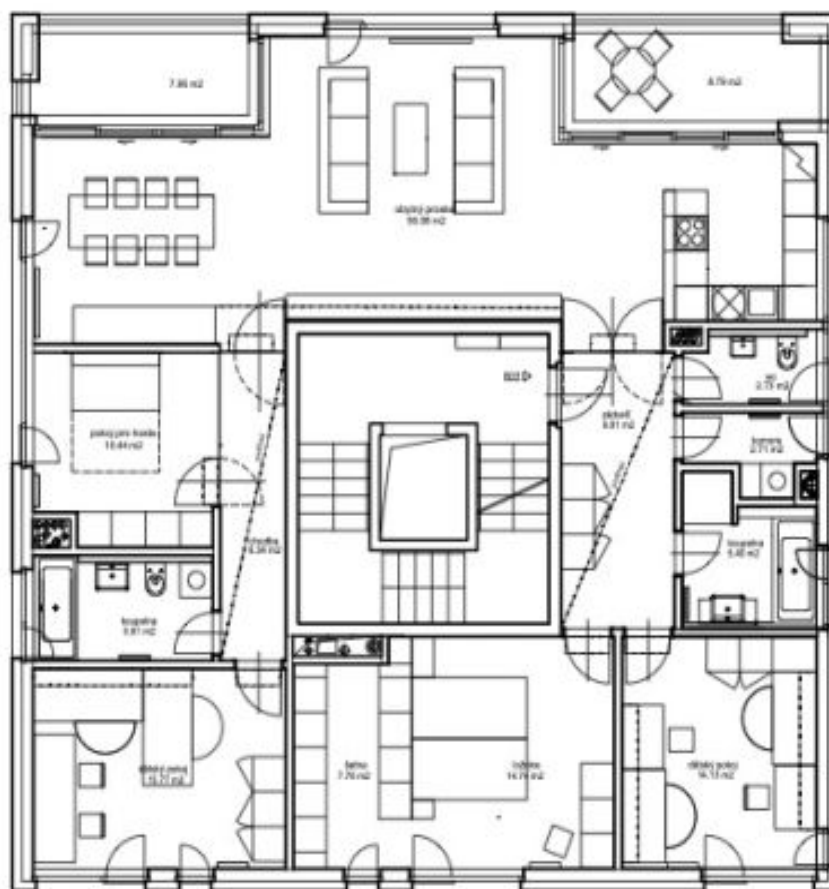


schéma bytu B21+B22 - 2np



Apartment Four-bedroom (5+kk)

Rented

151 m², Prague 4, Podolí, Na Hřebenech I

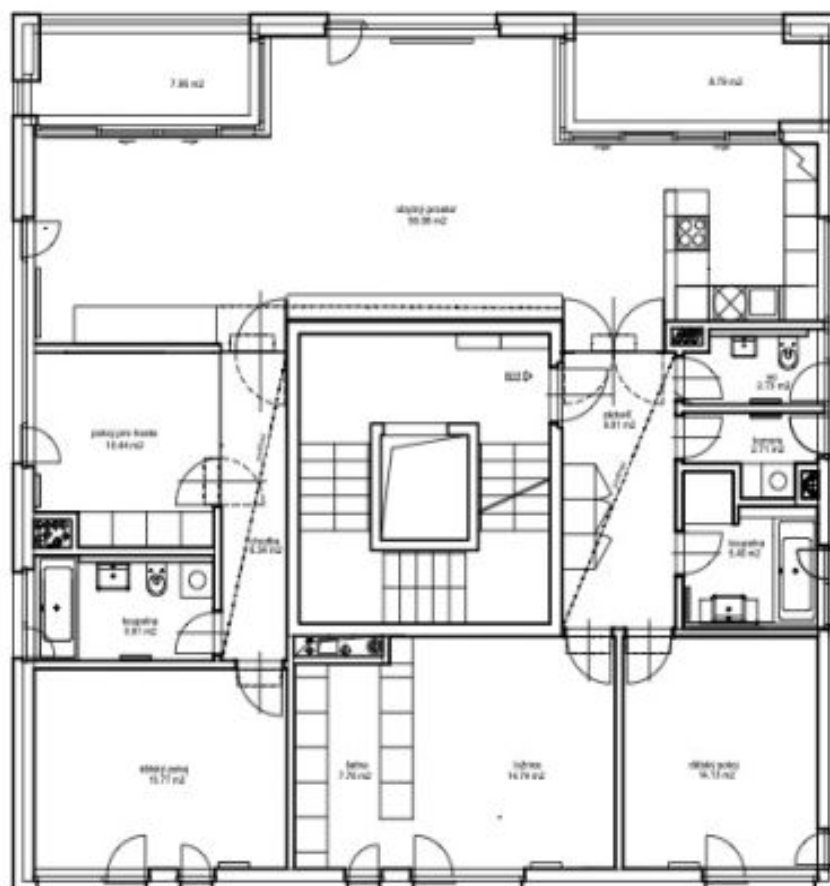


schéma bytu B21+B22 - 2np