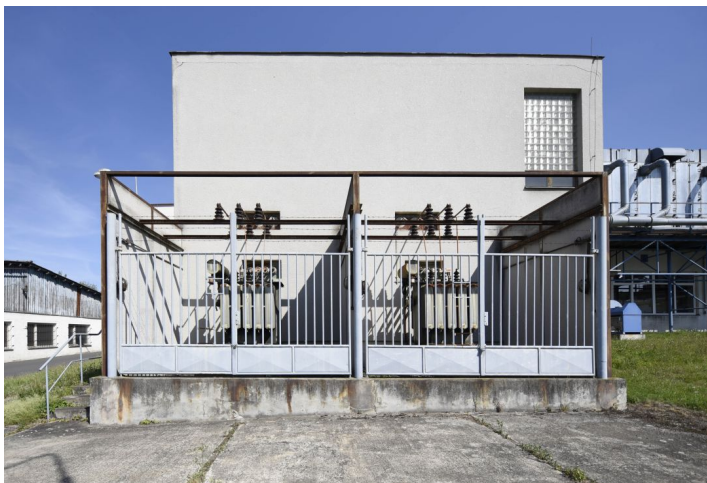




## Warehouse space

1497 m<sup>2</sup>, Klatovy, Jateční

Ask for price





## Warehouse space

1 497 m<sup>2</sup>, Klatovy, Jateční

**Ask for price**

|                               |                               |
|-------------------------------|-------------------------------|
| <b>Total area</b>             | 1 497 m <sup>2</sup>          |
| <b>Ceiling height</b>         | 5 m                           |
| <b>Floor loading capacity</b> | 5 t/m <sup>2</sup>            |
| <b>Column grid structure</b>  | —                             |
| <b>Structure</b>              | Reinforced concrete structure |
| <b>PENB</b>                   | G                             |
| <b>Reference number</b>       | 43316                         |

**1 497 sq.m.** of warehouse premises for lease in an area located in the industrial zone in the northern part of Klatovy.

### Location:

The park is located about 2 km from the main route E53 to Pilsen and 3 km from the road No. 22 to Domažlice. Excellent accessibility for employees by bus and train.

### Features and Services:

- The area is fully fenced and guarded and accessible 24/7

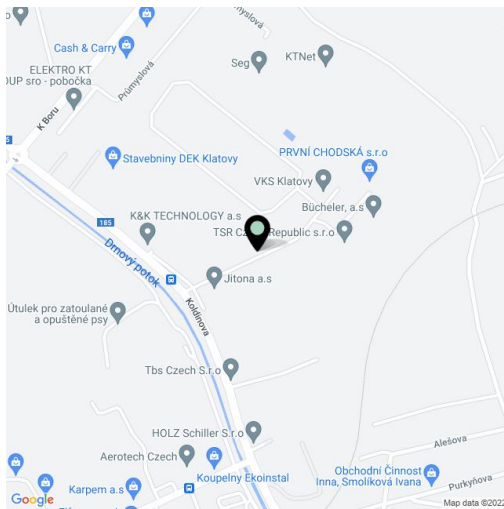
### Industrial/Warehouse space:

- loading ramp
- Drive - in access
- Outdoor handling areas for unloading and loading
- Dimension of entrance gate 5 x 3,9 m
- Floor loading capacity 5 T/sq.m
- Clear height 5 m
- engineering networks - sewerage, water supply, electrical network 230 V / 400 V, heat pipe
- preparation of gasification in 2021
- sufficient capacity of the electricity network

### Office:

- a two-storey office building with office space, meeting rooms and all amenities
- possibility of parking

Lessee pays no commission.



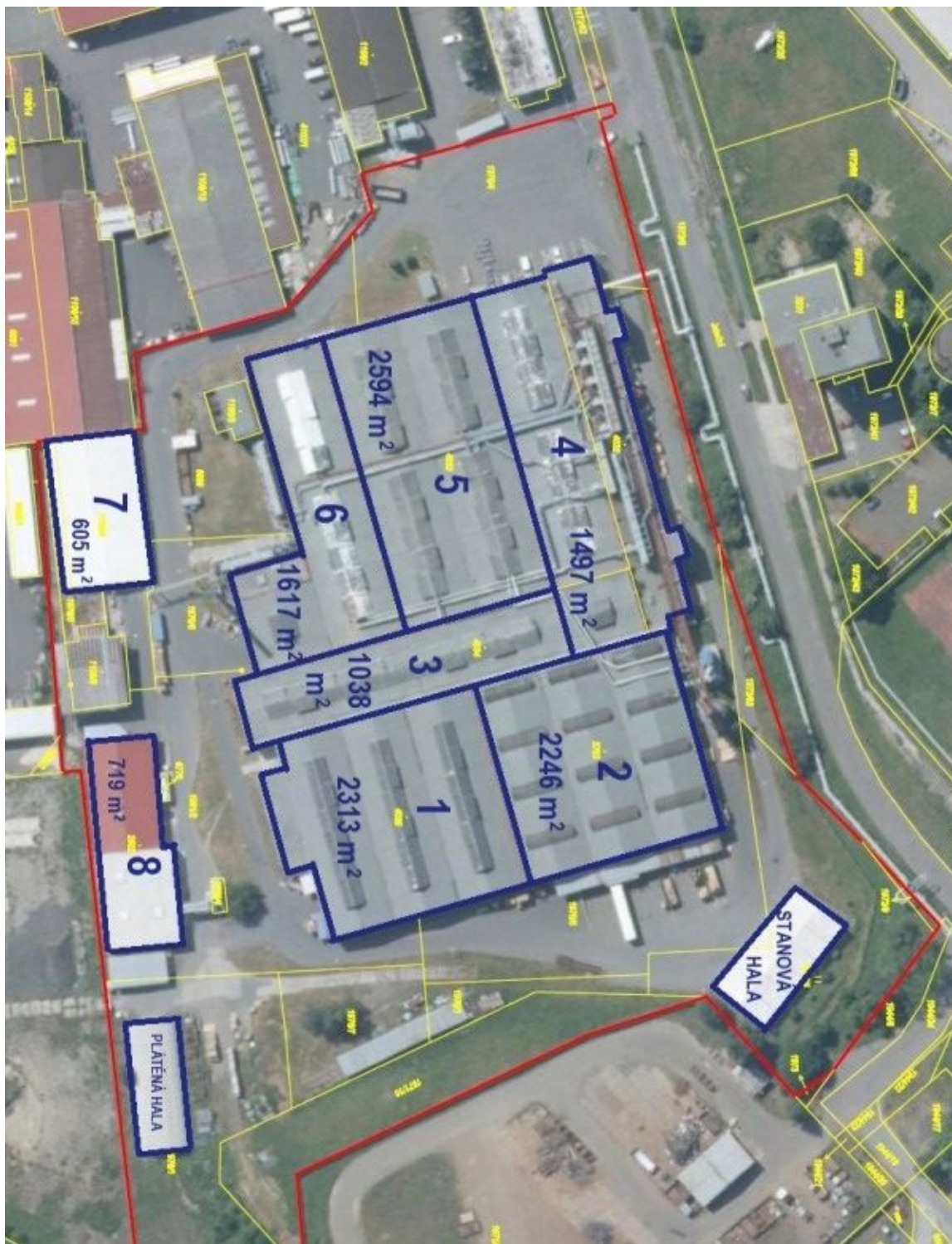




## Warehouse space

Ask for price

1497 m<sup>2</sup>, Klatovy, Jateční

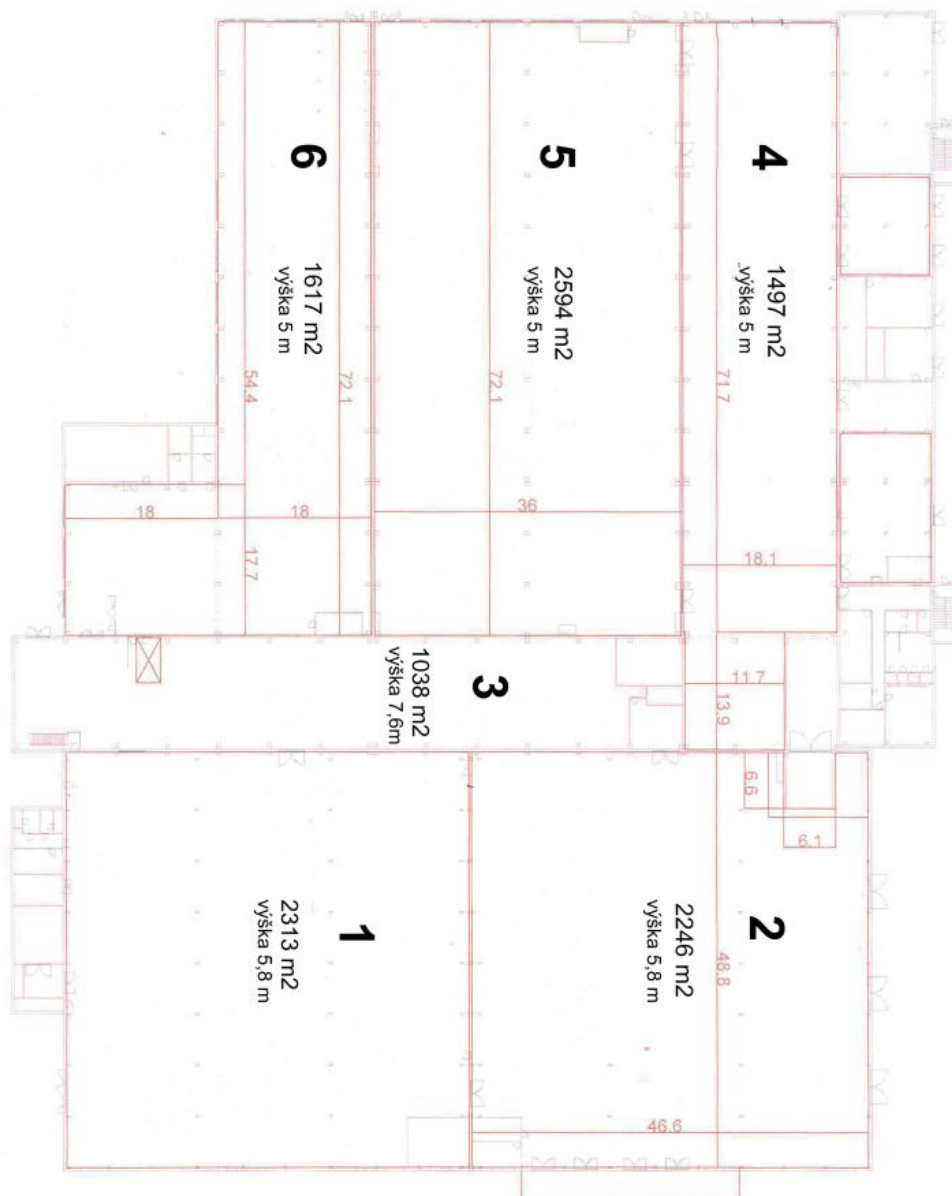




## Warehouse space

1497 m<sup>2</sup>, Klatovy, Jateční

Ask for price





## Warehouse space

1497 m<sup>2</sup>, Klatovy, Jateční

Ask for price

světlá výška haly pod nosníky 5 m

nosnost povrchu 5000 kg/ m<sup>2</sup>

rozměry haly  
šířka 18 m  
délka 72 m

vrata  
šířka 4 m  
výška 3,5 m

