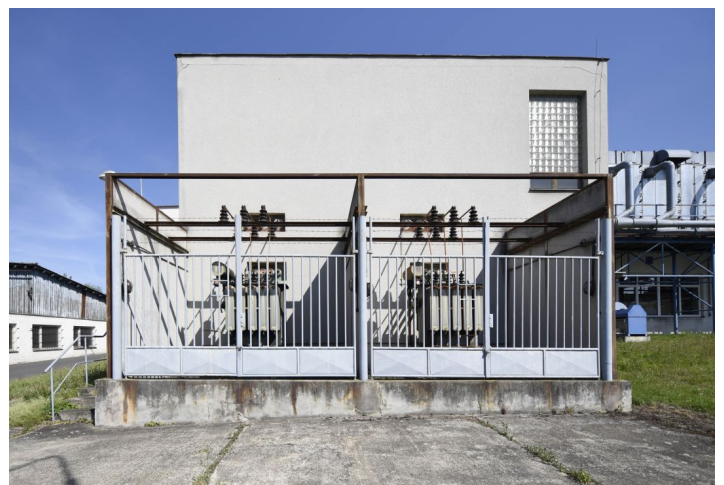




Warehouse space

1038 m², Klatovy, Jateční

Ask for price





Warehouse space

1 038 m², Klatovy, Jateční

Ask for price

Total area	1 038 m ²
Ceiling height	7.6 m
Floor loading capacity	5 t/m ²
Column grid structure	—
Structure	Reinforced concrete structure
PENB	G
Reference number	43322

1 038 sq.m. of warehouse premises for lease in an area located in the industrial zone in the northern part of Klatovy.

Location:

The park is located about 2 km from the main route E53 to Pilsen and 3 km from the road No. 22 to Domažlice. Excellent accessibility for employees by bus and train.

Features and Services:

- The area is fully fenced and guarded and accessible 24/7

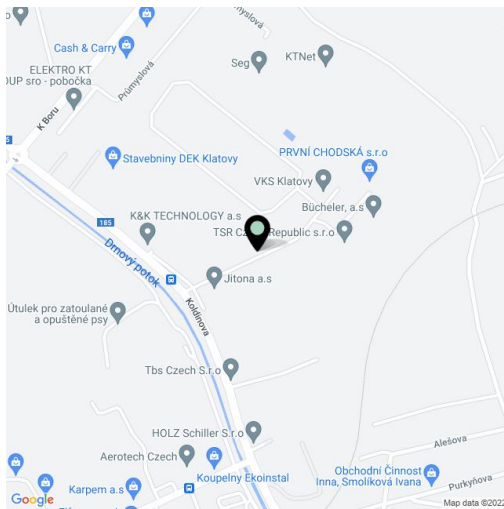
Industrial/Warehouse space:

- loading ramp
- Drive - in access
- Outdoor handling areas for unloading and loading
- 2 entrance gates with dimension of 2,9 x 2,9 m
- Floor loading capacity 5 T/sq.m
- Clear height 7,6 m
- engineering networks - sewerage, water supply, electrical network 230 V / 400 V, heat pipe
- preparation of gasification in 2021
- sufficient capacity of the electricity network

Office:

- a two-storey office building with office space, meeting rooms and all amenities
- possibility of parking

Lessee pays no commission.

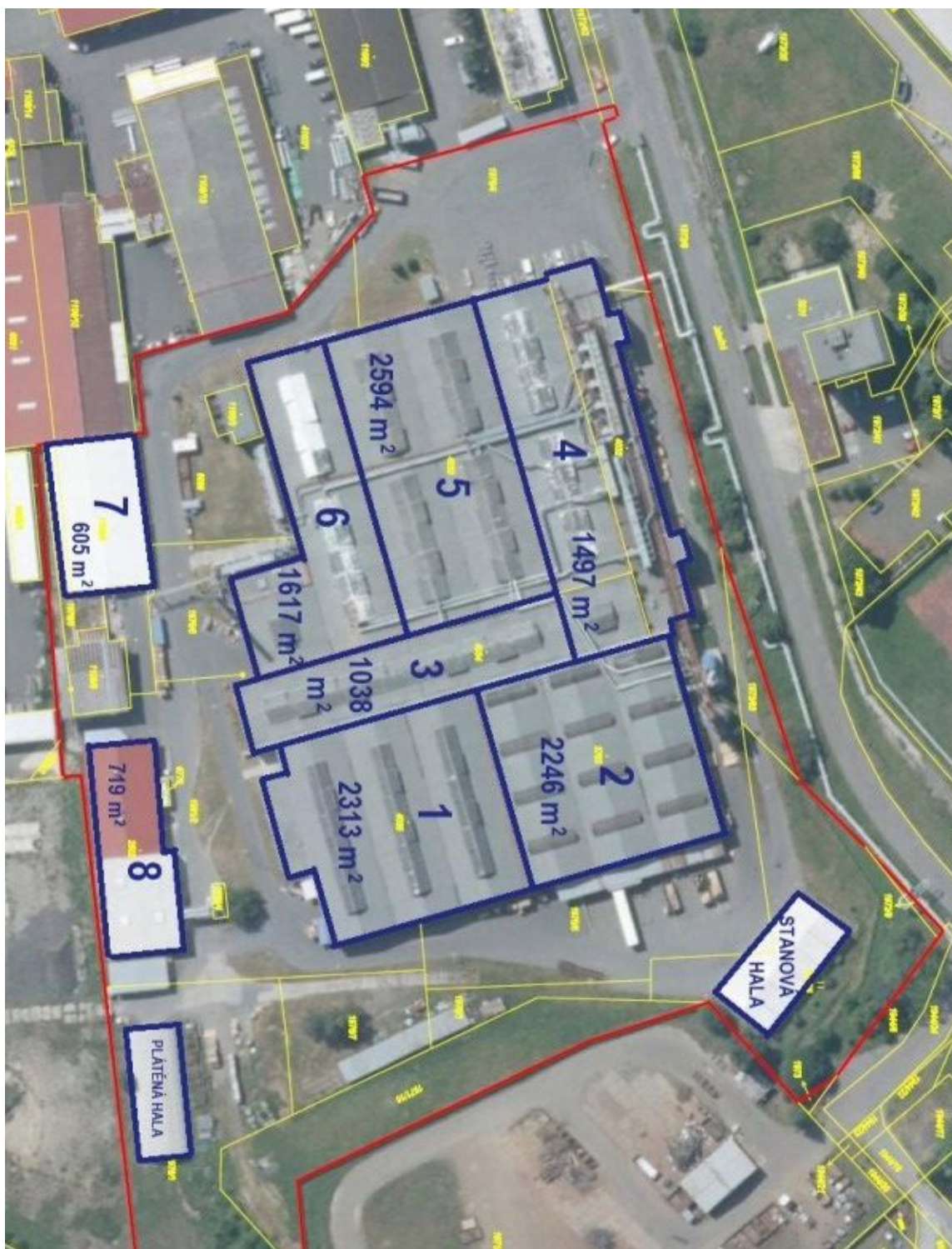




Warehouse space

Ask for price

1038 m², Klatovy, Jateční





Warehouse space

1038 m², Klatovy, Jateční

Ask for price

