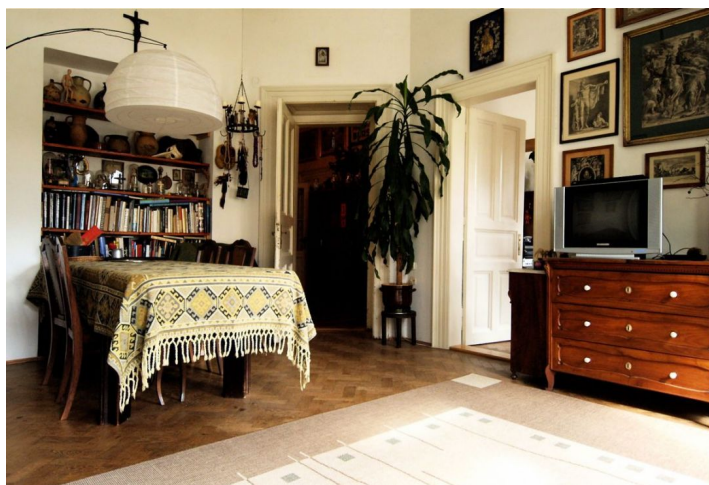




## Apartment Two-bedroom (3+1)

Ask for price

101 m<sup>2</sup>, Prague 1, Josefov, Parizska







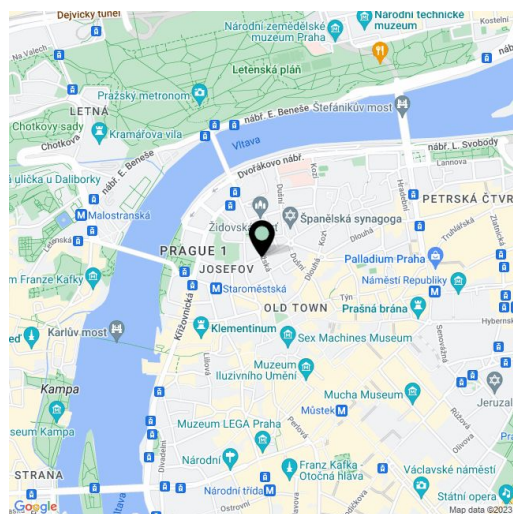
## Apartment Two-bedroom (3+1)

Ask for price

101 m<sup>2</sup>, Prague 1, Josefov, Parizska

Total area	101 m <sup>2</sup>
Parking	-
Cellar	-
PENB	G
Reference number	4345

Apartment before modernization situated on the 4th floor of this elegantly restored Art Nouveau building in Pařížská street. The bright and quiet corner apartment has 3 large rooms (27.4 m<sup>2</sup>, 17.1 m<sup>2</sup> and 19.3 m<sup>2</sup>), spacious entrance hall (11 m<sup>2</sup>), kitchen (16.5 m<sup>2</sup>), bathroom, pantry and storage room. The apartment could be occupied immediately, however it deserves a complete upgrade to create a modern impressive home. All the original details such as stucco, parquet floors, double wing doors and wooden paneling around the windows have conveniently been preserved.



\* Area of the unit according to the Civil Code. The area consists of the sum total area of the entire unit bounded by perimeter walls.



## Apartment Two-bedroom (3+1)

Ask for price

101 m<sup>2</sup>, Prague 1, Josefov, Parizska

