



**Retail space****Rented**

Prague 2, Vinohrady, Na Švihance

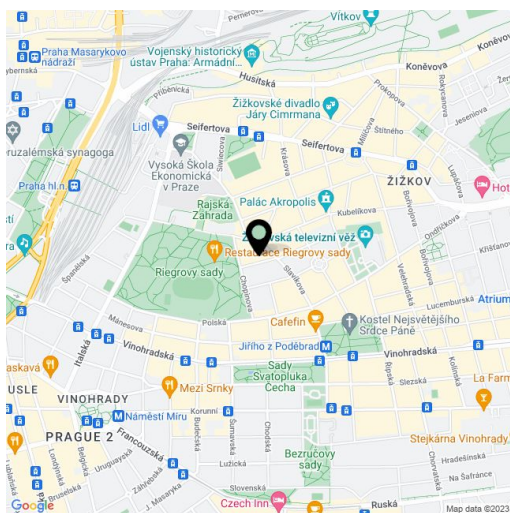
Available area	343 m ²
Parking	-
PENB	G
Reference number	43584

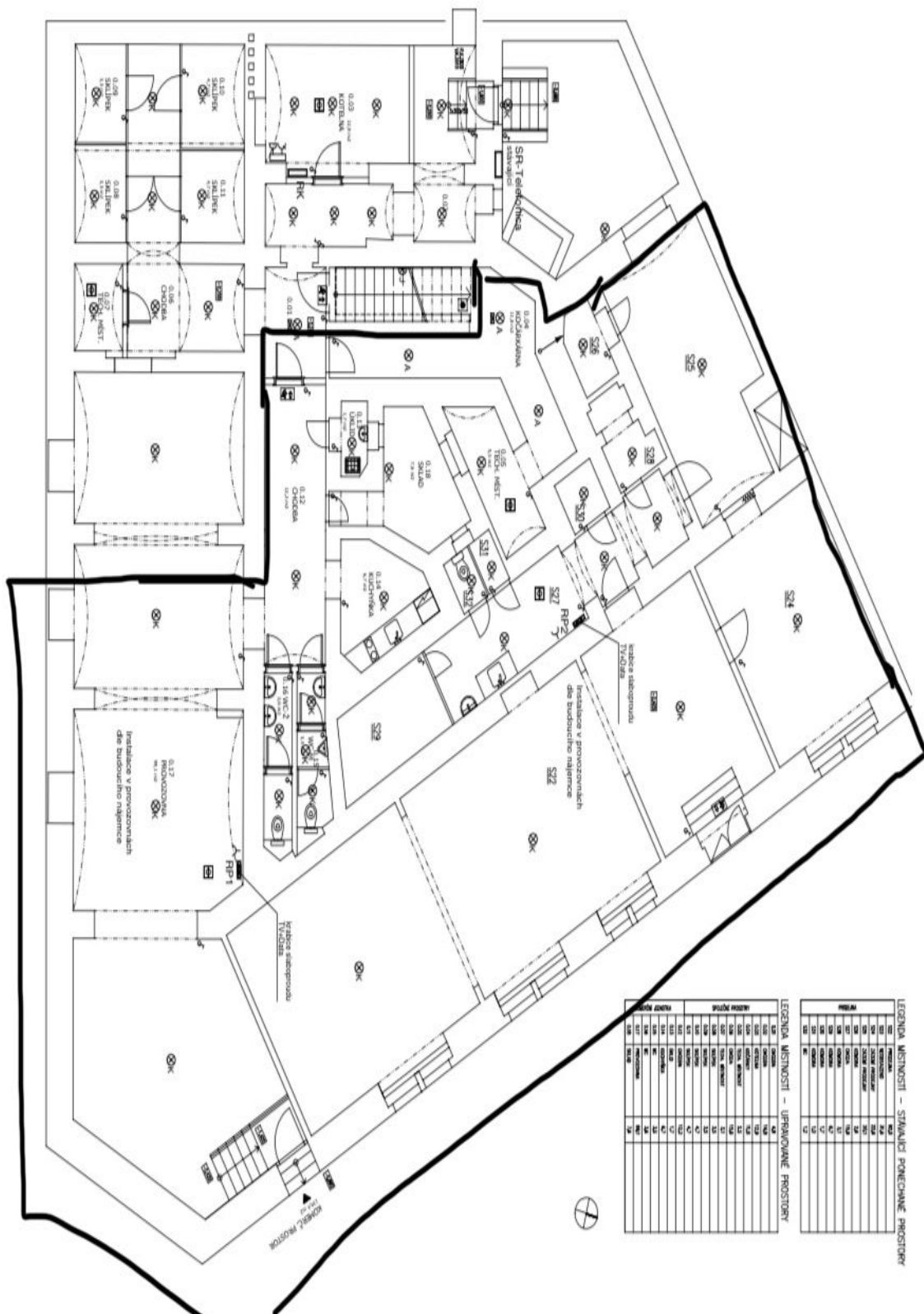
Retail space for lease on the lower ground floor of the Vinohrady residence created by the reconstruction of an Art Nouveau house situated on a street just a few steps from Rieger's Orchards and Jiřího z Poděbrad square.

Location:

Great accessibility by public transport - the metro station Jiřího z Poděbrad (line A) is about 5 minutes walk-away, the bus stop U Prdlavky and Park Rajska zahrada is about 2 minutes walk-away. All civic amenities in the vicinity - restaurants, cafes, bistros, groceries, polyclinic and pharmacies.

Rental and service charges listed without VAT. Lessee pays no commission.





LEGENDA MÍSTNOSTÍ - STÁLICI PONECHÁNE PROSTORY

PROJEM	PROJEM	PROJEM
01	02	03
04	05	06
07	08	09
10	11	12
13	14	15
16	17	18
19	20	21
22	23	24
25	26	27
28	29	30
31	32	33
34	35	36
37	38	39
40	41	42
43	44	45
46	47	48
49	50	51
52	53	54
55	56	57
58	59	60
61	62	63
64	65	66
67	68	69
70	71	72
73	74	75
76	77	78
79	80	81
82	83	84
85	86	87
88	89	90
91	92	93
94	95	96
97	98	99
100	101	102

LEGENDA MÍSTNOSTÍ - UPRÁVOVANÉ PROSTORY

PROJEM	PROJEM	PROJEM
01	02	03
04	05	06
07	08	09
10	11	12
13	14	15
16	17	18
19	20	21
22	23	24
25	26	27
28	29	30
31	32	33
34	35	36
37	38	39
40	41	42
43	44	45
46	47	48
49	50	51
52	53	54
55	56	57
58	59	60
61	62	63
64	65	66
67	68	69
70	71	72
73	74	75
76	77	78
79	80	81
82	83	84
85	86	87
88	89	90
91	92	93
94	95	96
97	98	99
100	101	102