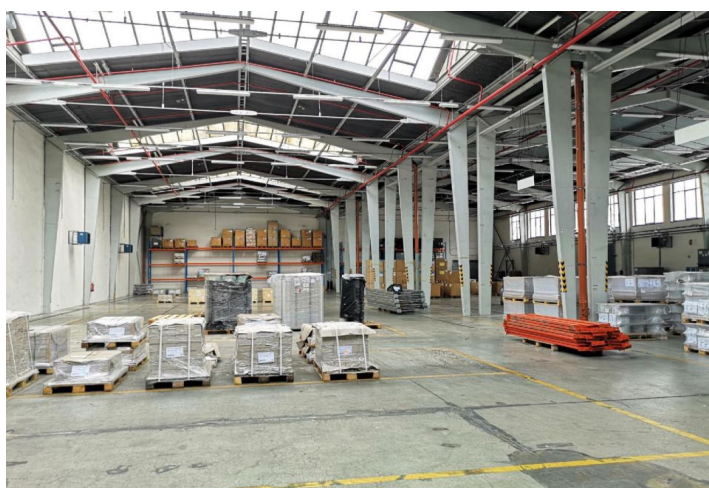




Industrial space

3 164 m², Břeclav, Břeclav, Mládežnická

Ask for price





Industrial space

3 164 m², Břeclav, Břeclav, Mládežnická

Ask for price

Total area	3 164 m ²
Available area for rent	3 164 m ²
Ceiling height	6.5 m
Floor loading capacity	5 t/m ²
Column grid structure	—
Structure	Reinforced concrete structure
PENB	G
Reference number	43666

3 164 sq.m. of industrial, warehouse and office premises for lease in Břeclav. The premises are suitable for light production, logistics and storage.

Location:

The park is located in the southeastern part of the city of Břeclav (6.5 km from exit 48 of the D2 highway for cars up to 3.4 m high and 22 km for cars over 3.4 m high).

Equipment and services:

- The area is accessible 24/7 with permanent security
- Utility networks (sewerage, water supply), electrical network 230 V/400 V
- The area is gasified
- Clear height 6.5 m
- Floor loading capacity 5 t/sq.m.
- Outdoor handling areas for unloading and loading
- Foldable loading docks
- Sprinklers
- Possibility of parking at the object
- Excellent accessibility for employees by train and bus

Lessee pays no commission.

