



Office building

€ 25.00 - 27.00 / m² | CZK 628 - 678 / m²

2 664 m², Prague 1, Staré Město, Na Příkopě



**Office building****€ 25.00 - 27.00 / m² | CZK 628 - 678 / m²**2 664 m², Prague 1, Staré Město, Na Příkopě

Service price	137 CZK monthly per m ²
Total building area	7 439 m ²
Tenant consumption	—
Parking	-
Parking service charges	—
Parking ratio	—
Certification	LEED Gold
PENB	G
Reference number	43681

This retail and administrative complex, which is currently being renovated according to the designs of the Studio Acht studio, is located in the historic center of Prague on one of the most important streets in Central and Eastern Europe. It offers up to 3,500 sq. m. of premium office space for lease that can be divided into premises for 3 tenants. There are also 300 sq. m. of unique private terraces. The complex will emphasize the use of environmentally friendly technologies aimed at reducing energy consumption and minimizing its carbon footprint. The goal is to achieve LEED Gold certification.

Location:

Excellent accessibility by public transport. The Náměstí Republiky metro station (line B) can be reached in 2 minutes, the Hlavní nádraží metro station in 10 minutes, the Náměstí Republiky tram stop in 2 minutes, and The Václav Havel Airport is a 35-minute drive away. In the vicinity of the building are also complete civic amenities, boutiques, cafes, restaurants, banks, and a shopping center.

Features and services:

- Elegant entrance lobby
- Private terraces
- 4-pipe fan coil units
- Floor boxes
- Openable windows
- Modern access system
- 24/7CCTV
- 2 separate entrances
- 3 modern elevators
- Building and facility management
- Optical connections
- Ceilings with integrated LED lighting
- HVAC – air-conditioning, ventilation
- Green certification

Available from Q4 2024.

Lease and service charges listed without VAT. Lessee pays no commission.



Office building

€ 25.00 - 27.00 / m² | CZK 628 - 678 / m²

2 664 m², Prague 1, Staré Město, Na Příkopě

LEVEL 3

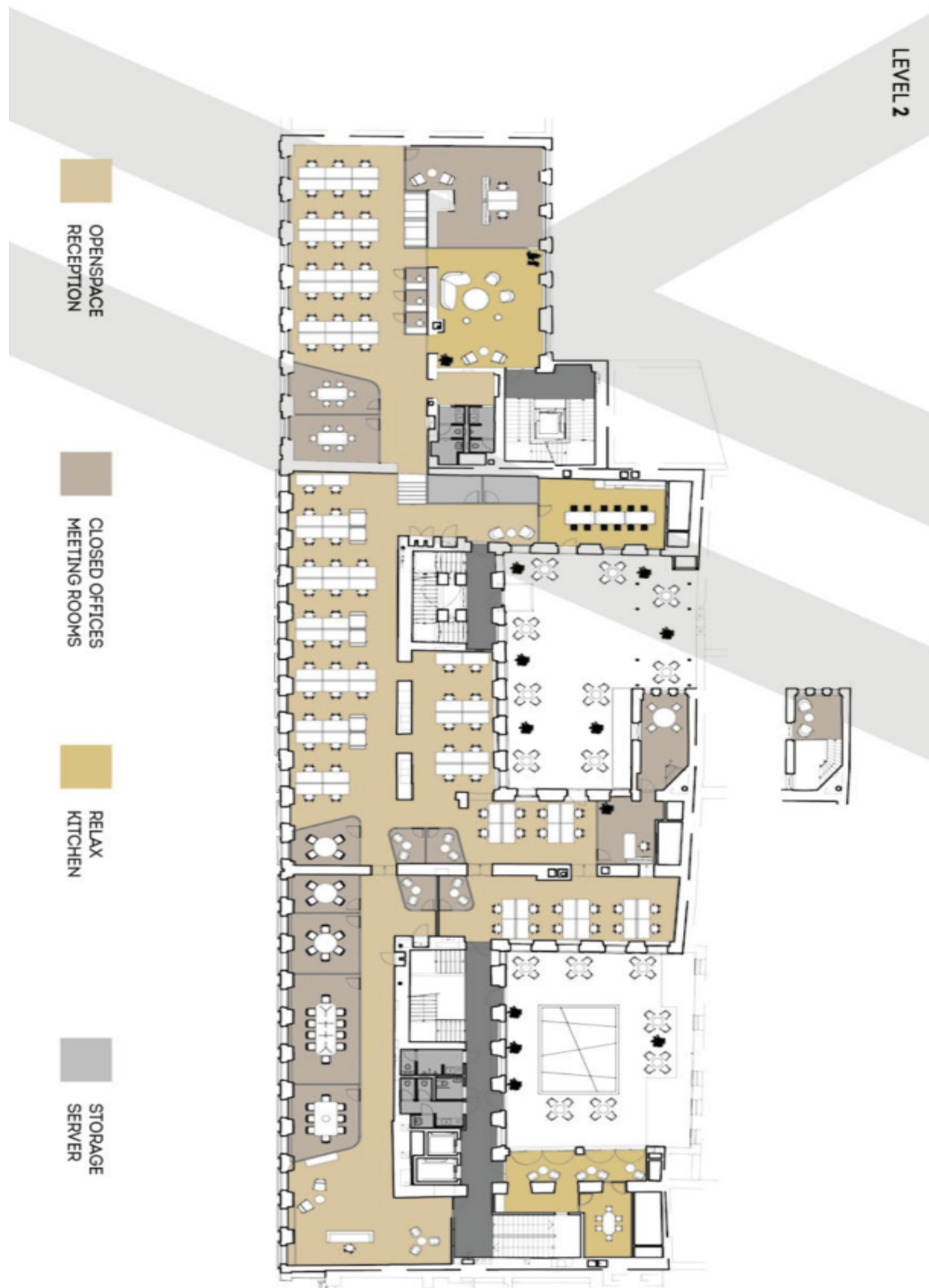




Office building

€ 25.00 - 27.00 / m² | CZK 628 - 678 / m²

2 664 m², Prague 1, Staré Město, Na Příkopě





Office building

€ 25.00 - 27.00 / m² | CZK 628 - 678 / m²

2 664 m², Prague 1, Staré Město, Na Příkopě

LEVEL 4

OFFICE 291 sqm
TOILETS 13 sqm
CORRIDORS 15 sqm

OFFICE 758 sqm
TOILETS 23 sqm
CORRIDORS 69 sqm

