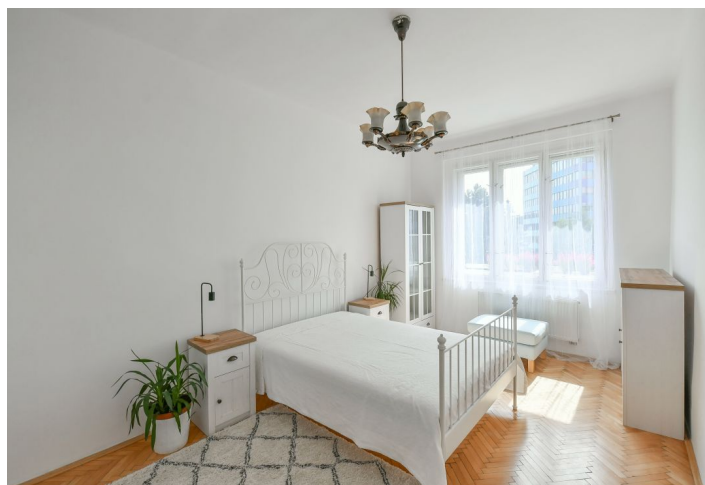




## Apartment One-bedroom (2+kk)

Rented

50 m<sup>2</sup>, Praha 10, Vršovice, Kodaňská





## Apartment One-bedroom (2+kk)

Rented

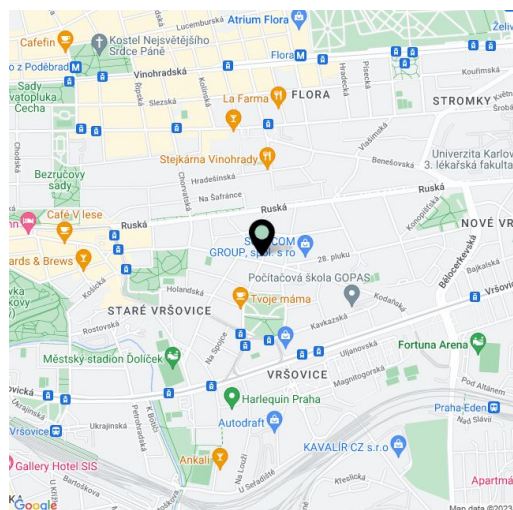
50 m<sup>2</sup>, Praha 10, Vršovice, Kodaňská

Total area	56 m <sup>2</sup>
Floor area*	50 m <sup>2</sup>
Terrace	6 m <sup>2</sup>
Parking	-
Cellar	-
PENB	G
Reference number	43717
Available from	Immediately

This fully furnished renovated 1-bedroom apartment with a south-facing terrace is on the second floor of a well-maintained renovated apartment building in one of the most popular locations in Prague 10, on tree-lined Kodaňská Street. The surrounding area offers everything you need for comfortable city life incl. shops, cafes, bistros, and restaurants. Nearby Krymská Street is lined with popular bars and clubs. Buses and trams provide quick connections to the city center, and the Náměstí Míru metro station is just a five-minute ride away.

The bright interior features a living room with a fully fitted open plan kitchen and dining area, a spacious bedroom, a shower bathroom, a separate toilet, a pantry, and an entrance hall with a built-in wardrobe and access to the terrace.

Original hardwood parquet floors, vinyl floors, tiles, electric boiler, washing machine, dishwasher, microwave oven, TV. Monthly deposit for service charges and water: CZK 2,500. Electricity is billed separately (transferred to the tenant).



\* Area of the unit according to the Civil Code. The area consists of the sum total area of the entire unit bounded by perimeter walls.