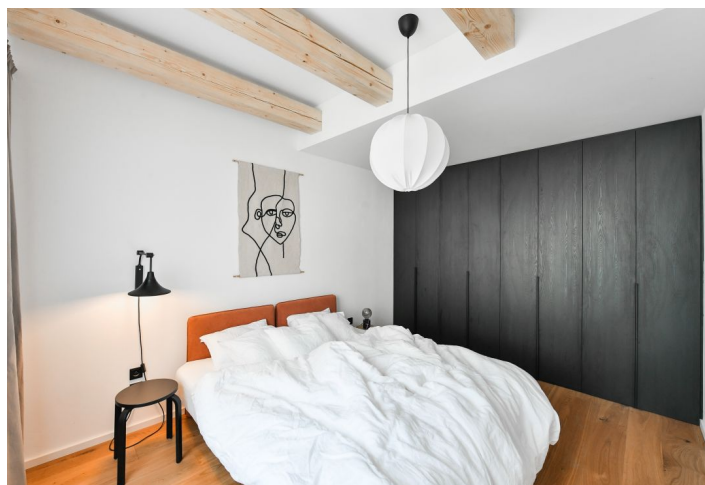




Apartment One-bedroom (2+1)

Rented

75 m², Prague 8, Karlín, Sokolovská





Apartment One-bedroom (2+1)

Rented

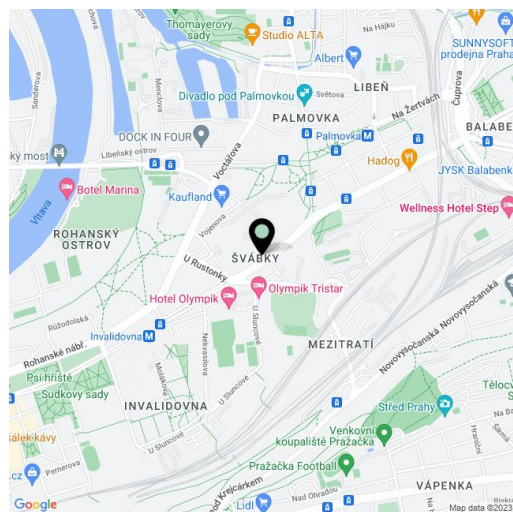
75 m², Prague 8, Karlín, Sokolovská

| | |
|------------------|--|
| Total area | 75 m ² |
| Parking | - |
| Cellar | - |
| Service price | Deposit for services and water CZK 2,000/month. Gas and electricity - transferred to the tenant. |
| PENB | G |
| Reference number | 43801 |
| Available from | Immediately |

This completely refurbished and furnished quiet designer apartment is situated on the second floor of a courtyard building with no elevator. The building stands mere steps from a tram stop and Karlínské Square with a children's playground and the Church of Saints Cyril and Methodius. Located in the highly sought-after district of Karlín, Prague 8, with rich amenities, full services, and the Karlín business center in the immediate vicinity, and with very quick access to the city center, just a short walk from the Křižíkova and Florenc metro stations.

The apartment features a living room, a fully fitted eat-in kitchen, a bedroom with built-in wardrobes, a bathroom with a bathtub and toilet, and a small entrance hall with built-in wardrobes. The interior of the courtyard-facing apartment is walk-through.

Air-conditioning, hardwood floors, heated tiles in the kitchen and bathroom, security entry door, ample custom-made storage space, gas boiler, dishwasher, microwave oven, washer combined with a dryer.



* Area of the unit according to the Civil Code. The area consists of the sum total area of the entire unit bounded by perimeter walls.



Apartment One-bedroom (2+1)

75 m², Prague 8, Karlín, Sokolovská

Rented

