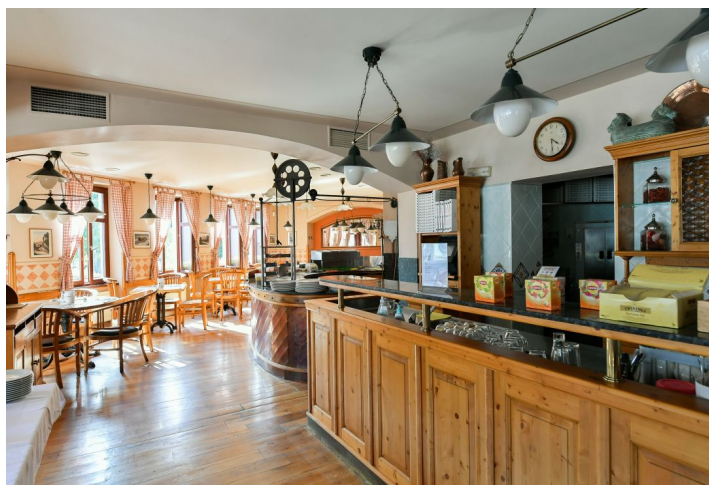




## Apartment building

Ask for price

880 m<sup>2</sup>, Trutnov, Špindlerův Mlýn, Špindlerův Mlýn





## Apartment building

880 m<sup>2</sup>, Trutnov, Špindlerův Mlýn, Špindlerův Mlýn

**Ask for price**

Total gross floor area of the building	880 m <sup>2</sup>
Total net leasable area of the building	880 m <sup>2</sup>
Plot	371 m <sup>2</sup>
Foot print	371 m <sup>2</sup>
PENB	G
Reference number	43824

**Cozy family hotel for sale with 2 working restaurants and parking right in the center of the Špindlerův Mlýn ski resort in the Krkonoše Mountains.**

### Key investment criteria

- location in a famous Czech ski resort
- **high rating** on Booking.com
- total **gross area of 880 sq. m.**
- **9 stylish rooms** with bathrooms
- the building has been continuously maintained
- some rooms with **direct views of the Svatý Petr** or Medvědí slopes
- friendly atmosphere
- 2 restaurants (total capacity 175 people), among the Top 5 on Tripadvisor
- summer front garden for 40 guests
- problem-free arrival via a year-round maintained road

### Property description

- a **total of 9 rooms**: 5 x double, 3 x triple, 1 x suite (for 5 people)
- suite with a living room (tea kitchen and sofa bed), separate bedroom, bathroom with bathtub, and separate toilet (total 55 sq. m.)
- total capacity of the hotel is up to 25 people
- all units fully equipped
- room facilities: bathroom with a shower and toilet, LCD TV, direct dial telephone, safe, minibar, Wi-Fi
- laundry room equipped with 2 **Miele** professional washing machines and 2 dryers
- heated ski room and bike room
- **sauna**
- heated by 2 new Vaillant gas boilers

### Location

- **ski bus** stop 150 m far away
- hiking signpost near the building, connection to several **bike paths**
- next to the hotel is a bike rental shop with an **e-bike charger**
- ski equipment rental and ski school nearby
- grocery store and bakery in close proximity
- grocery store, pharmacy, post office
- water park, bobsleigh track
- bus station within a 10-min. walk (direct connection also from Prague)
- the beautiful surrounding nature of **Krkonoše National Park**
- rich sports experiences in every season

Total gross area 880 m<sup>2</sup>, built-up area 371 m<sup>2</sup>, plot 371 m<sup>2</sup>.

