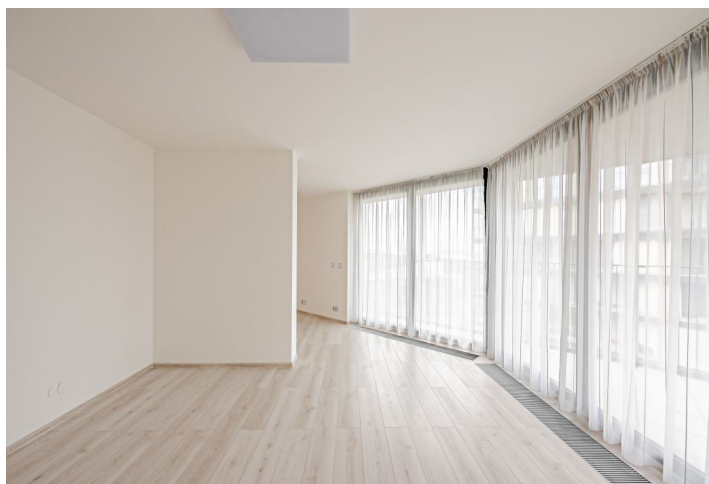




## Apartment Three-bedroom (4+kk)

Rented

162 m<sup>2</sup>, Prague 3, Žižkov, Malešická





## Apartment Three-bedroom (4+kk)

Rented

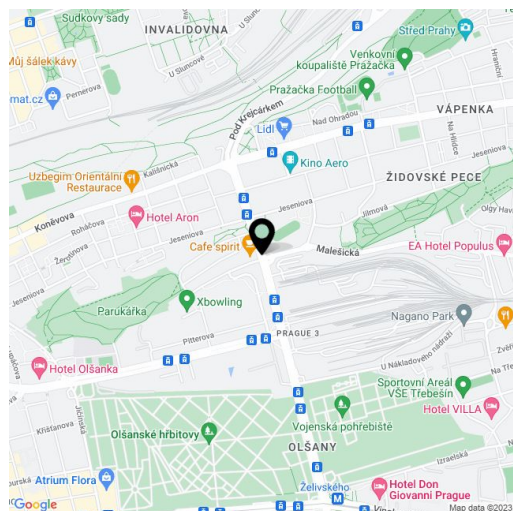
162 m<sup>2</sup>, Prague 3, Žižkov, Malešická

Total area	222 m <sup>2</sup>
Floor area*	162 m <sup>2</sup>
Terrace	60 m <sup>2</sup>
Parking	Garage parking is available.
Garage	Yes
Cellar	-
PENB	B
Reference number	43852
Available from	Immediately

This modern air-conditioned 3-bedroom 3-bathroom apartment with a 60 sq. m. terrace overlooking a landscaped park in the courtyard and beyond is on the 11th floor of the Central Park Praha gated residential project with a private park, a playground, a 24/7 reception and security, and underground parking. Located in the immediate vicinity of Parukářka Park, with complete amenities and services within easy reach (Olšanská clinic, a post office, sports facilities, shopping) and quick access to the city center (multiple tram lines, near the Želivského metro station).

The interior features a living room with a fully fitted open plan kitchen and dining area, 3 bedrooms, a small bedroom/study used as a **walk-in closet**, 3 bathrooms with toilets, a utility room, and an entrance hall. The apartment has a spacious **terrace** (accessible from all main rooms) offering wonderful green views.

**Air-conditioning**, floating floors, tiles, built-in wardrobes and storage, French windows, central heating, microwave oven, elevator, chip entry to the building, camera system. A **garage parking** space is available at an extra fee. Monthly deposit for service charges, water, and heating in the amount of CZK 11,000 is billed separately. Electricity will be transferred to the tenant.



\* Area of the unit according to the Civil Code. The area consists of the sum total area of the entire unit bounded by perimeter walls.



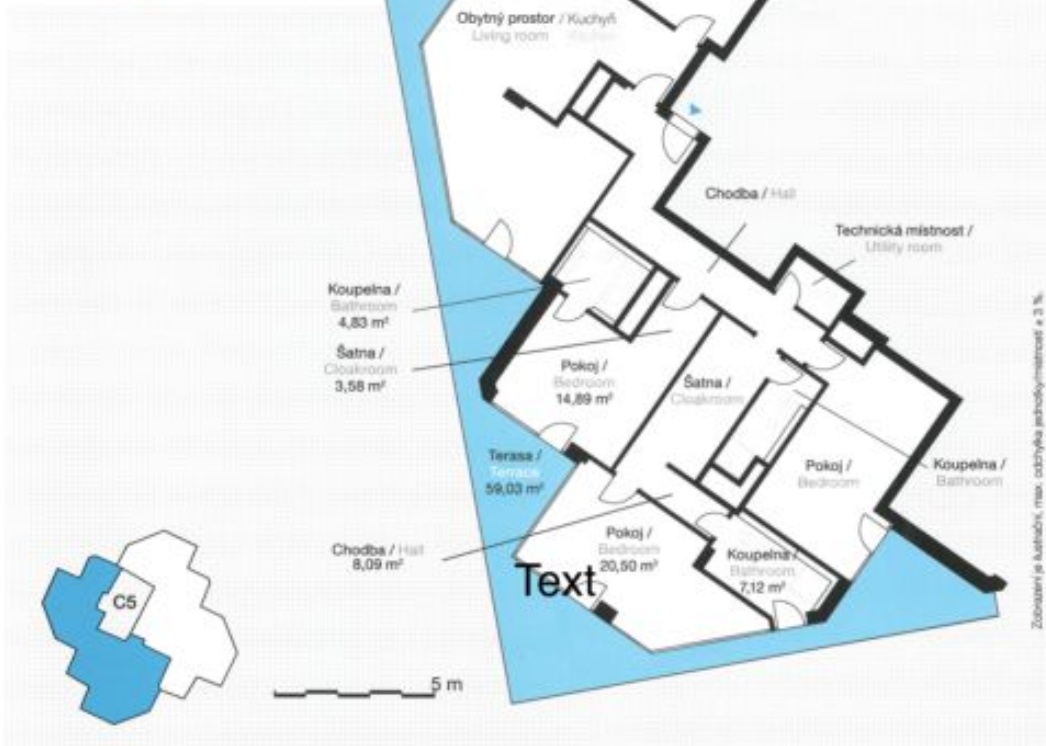
# Apartment Three-bedroom (4+kk)

Rented

162 m<sup>2</sup>, Prague 3, Žižkov, Malešická

## JEDNOTKA / UNIT 480

Byt / Flat  
4+kk / 3-bedroom  
Objekt / Building C5  
Podlaží / Floor 11



Plocha bytu celkem / Living floor area total	161,07 m <sup>2</sup>
Terasa / Terrace	59,03 m <sup>2</sup>
Vybavení jednotky / Unit accessories	
Garážové stání / Parking place	<input type="checkbox"/>
Kuchyňská linka / Kitchen units	<input type="checkbox"/>
Venkovní žaluzie / Outer awnings	<input type="checkbox"/>