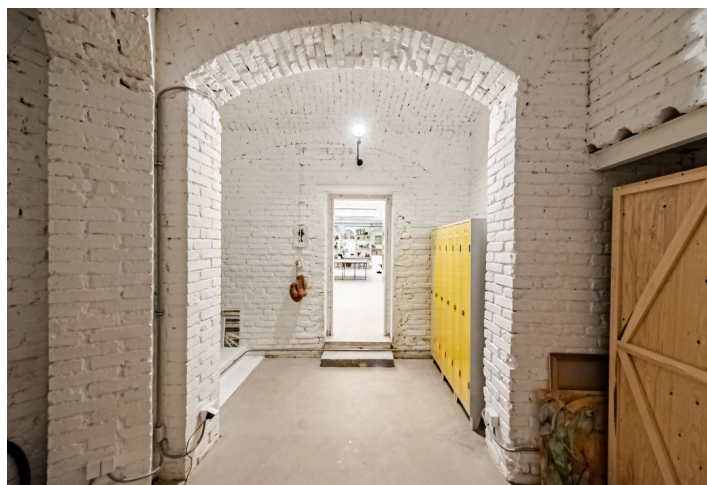
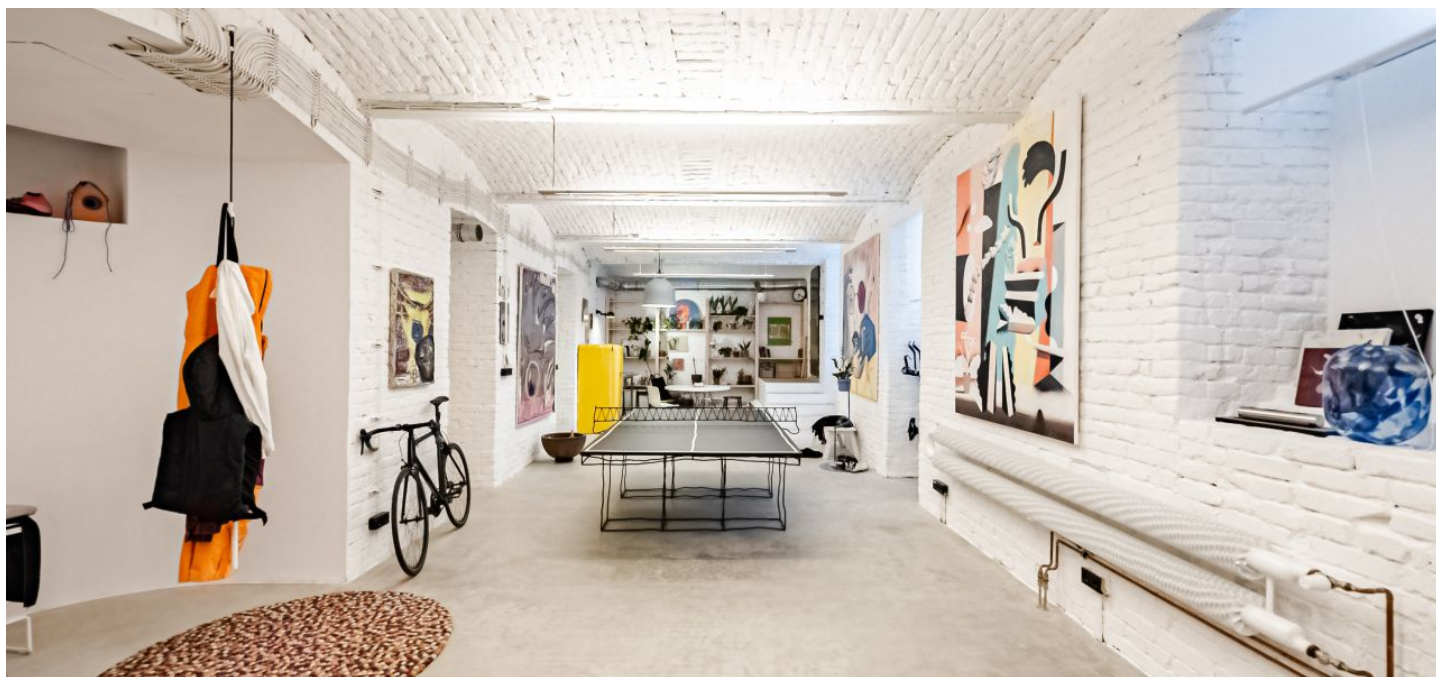




Retail space

114 m², Prague 10, Vršovice, Moskevská

Sold





Retail space

Sold

114 m², Prague 10, Vršovice, Moskevská

Total area	114 m ²
Parking	-
PENB	G
Reference number	43888

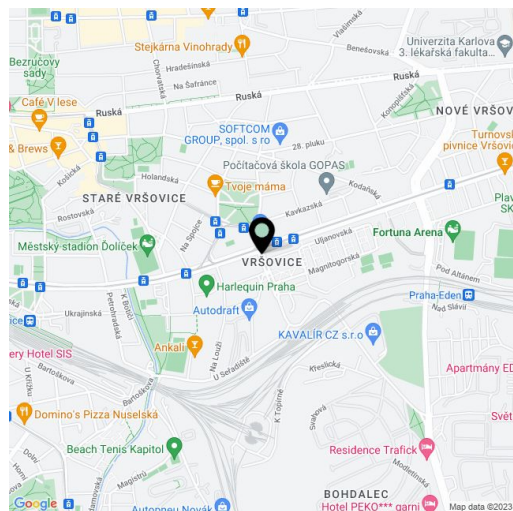
This non-residential space, suitable, for example, as a gallery or an architectural studio, is located in the basement of a nicely decorated Art Nouveau building set on Moskevská Street near a tram stop. Located on the border of Vršovice and Vinohrady, with a full infrastructure and landscaped parks.

The space consists of a main large room with a vestibule, a kitchen, and windows facing a quiet side street, a dressing room, a separate toilet, and a bathroom with a shower and the possibility of installing a jacuzzi.

The area is renovated and offered unfurnished.

This elegant neighborhood with a full range of services and excellent connections to the city center. A tram stop is right next to the building. Havlíčkovy and Heroldovy Sady parks are nearby, and the famous Krymská Street with many gourmet establishments and clubs is also a few steps away.

Floor area 114.4 m². The property is approved as a semi-residential unit.



**Retail space**114 m², Prague 10, Vršovice, Moskevská**Sold****Moskevská**

1	Kuchyň	12,60 m ²
2	WC	1,10 m ²
3	Koupelna	2,60 m ²
4	Obývací pokoj	66,30 m ²
5	Uklídková místnost	22,70 m ²
6	Místnost	1,50 m ²
7	Místnost	1,40 m ²

