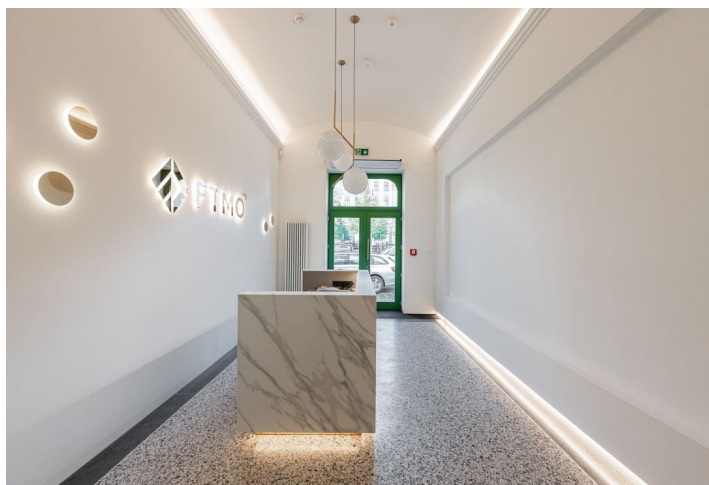




Office space

Rented

Prague 2, Nové Město, náměstí I. P. Pavlova



**Office space****Rented**

Prague 2, Nové Město, náměstí I. P. Pavlova

Service price	130 CZK monthly per m ²
Available area	217 m ²
Cellar	-
Parking	Yes
PENB	G
Reference number	43937

Office space for lease on the 3rd floor in a representative office space for lease in a reconstructed building located in the centre of Prague - right on I.P. Pavlova Square. The building will offer up to 1170 sq. m of leasable area on 6 floors. On each floor there will be sanitary facilities, a kitchen and a cleaning room. It will also include air-conditioning and the possibility of space layout. 12 parking spaces will be also available.

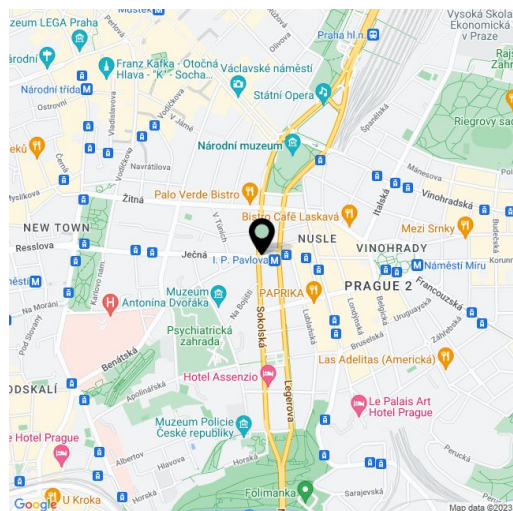
Location:

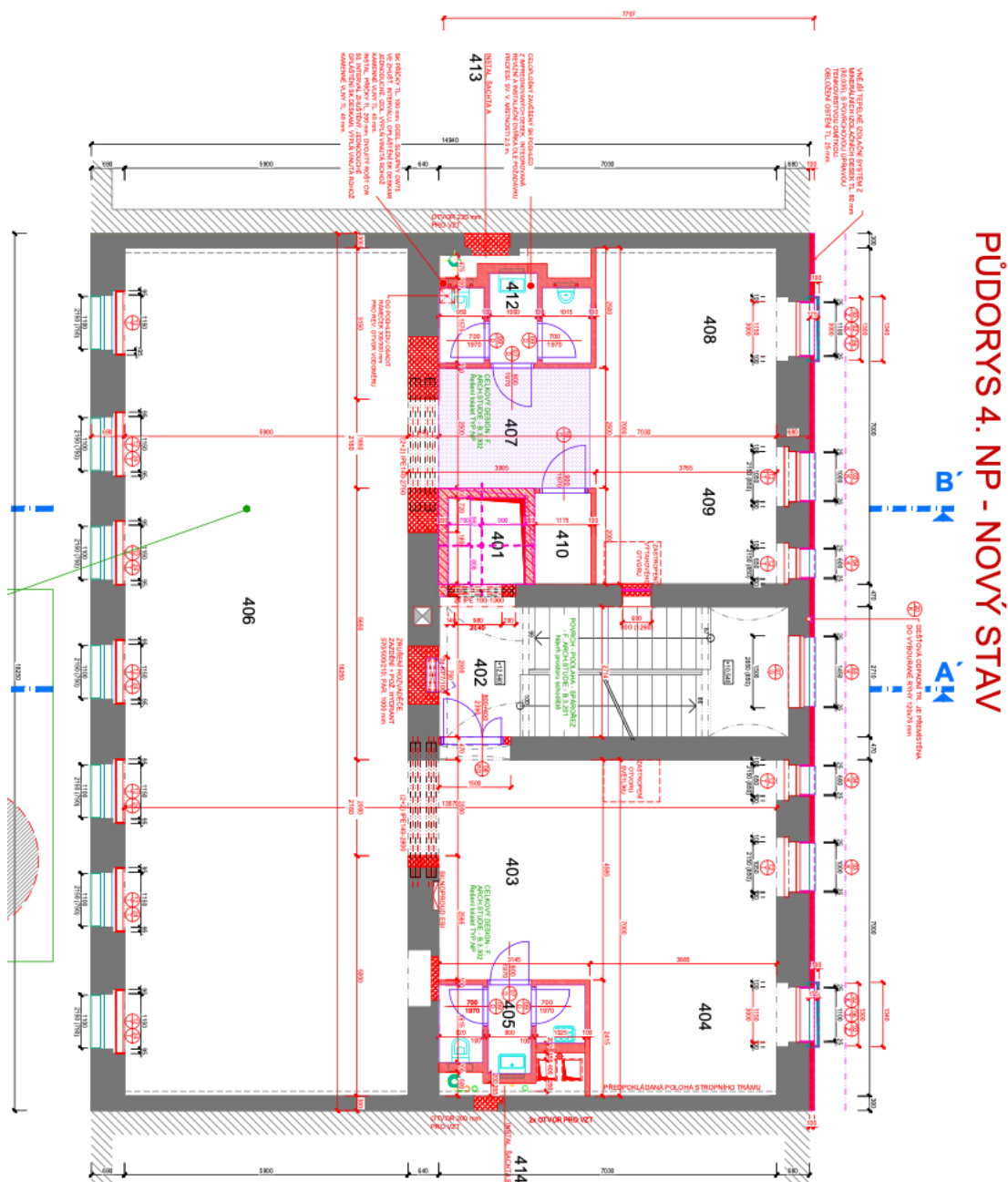
Excellent accessibility by car and public transport. The I.P. Pavlova tram stop and I.P. Pavlova metro station (line C) are nearby. Wenceslas Square is 10 minutes away by metro or tram. Complete civic amenities in the vicinity.

Features and Services:

- Warehouse
- Reception
- Parking in the courtyard
- 12 parking spaces
- Electric charging
- EZS, EPS
- Connection to PCO
- Air conditioning
- Elevator
- Possibility to customize the fitout
- Kitchenette, toilets

Rental and service charges listed without VAT. Lessee pays no commission.





PŮDORYS 4. NP - NOVÝ STAV