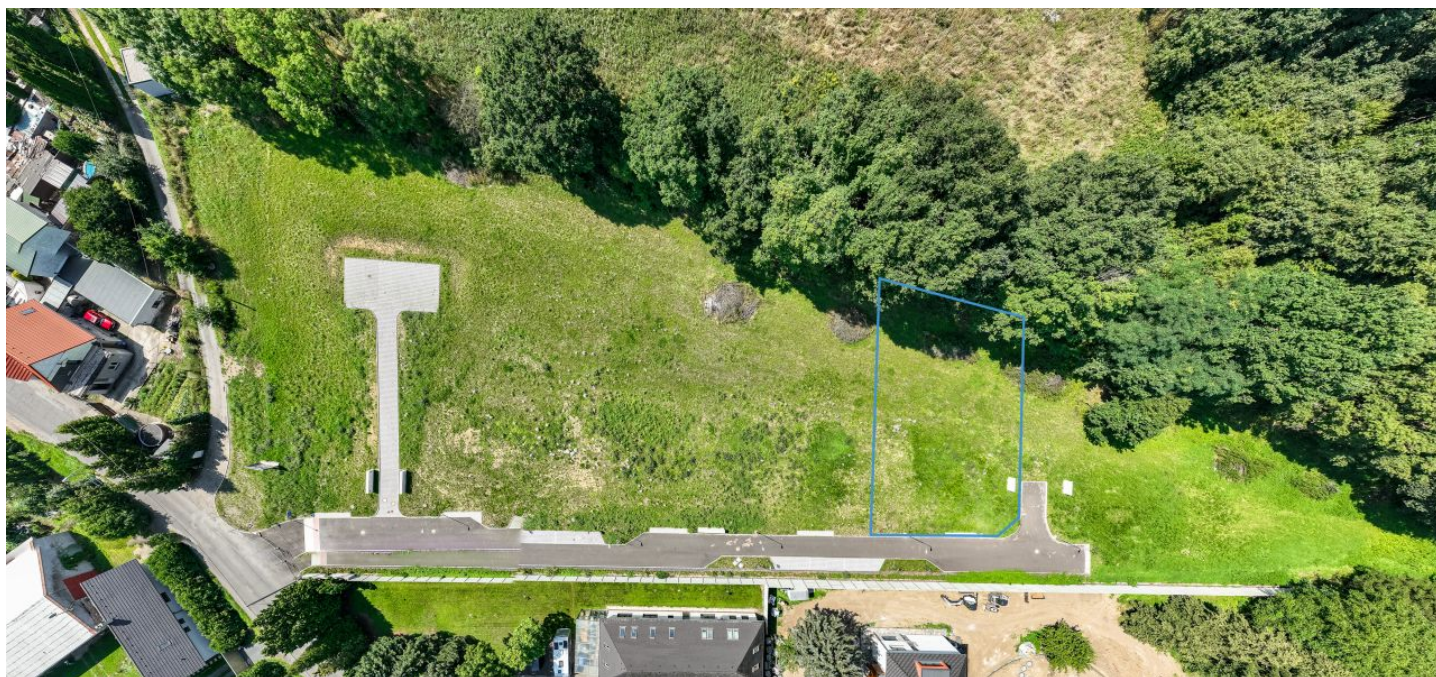




Land

1 044 m<sup>2</sup>, Mělník, Kralupy nad Vltavou

€ 202 558 | CZK 5 115 600





## Land

1 044 m<sup>2</sup>, Mělník, Kralupy nad Vltavou

€ 202 558 | CZK 5 115 600

Price per sq. m.	4 900 CZK
Total area	1 044 m <sup>2</sup>
Land type	Housing
Reference number	43953

**This southwest-facing plot of land suitable for the construction a family house is set in an ideal location in a nature park on the outskirts of Kralupy nad Vltavou.**

The land has **water, electricity, and gas connections**. The building coefficient has an upper limit of 30%; the maximum built-up area is 313 m<sup>2</sup>. A family house with up to two floors + an attic (or a extra floor) can be built on the plot.

The slightly sloping lot is part of several plots of land in a **beautiful spot on the edge of a forest**. Thanks to their location, there will be no further development nearby. **A new illuminated asphalt road** leads to the property.

Minice is a suburb of Kralupy nad Vltavou, which offers **an excellent infrastructure and convenient connections to Prague by car and public transport**. The town center with everything you need is 2 kilometers away from the plot. Located in the nature park around Okoř and Budeč, it is suitable for family living surrounded by greenery, full of natural and historical monuments, a perfect environment for sports activities and walks.

The total area of 1,044 m<sup>2</sup>.

