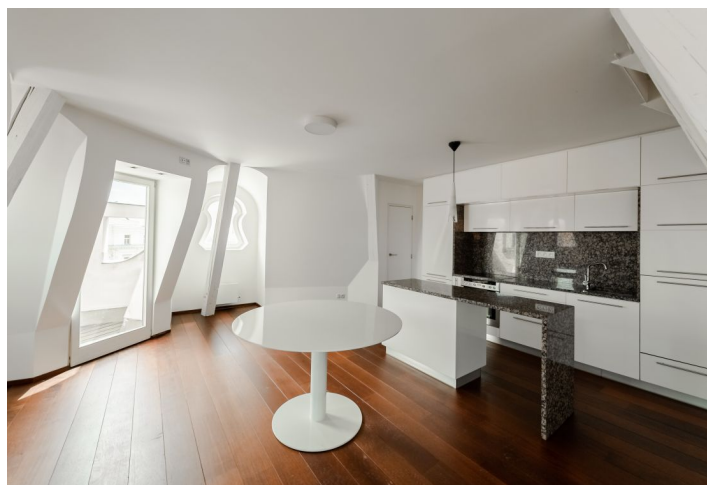
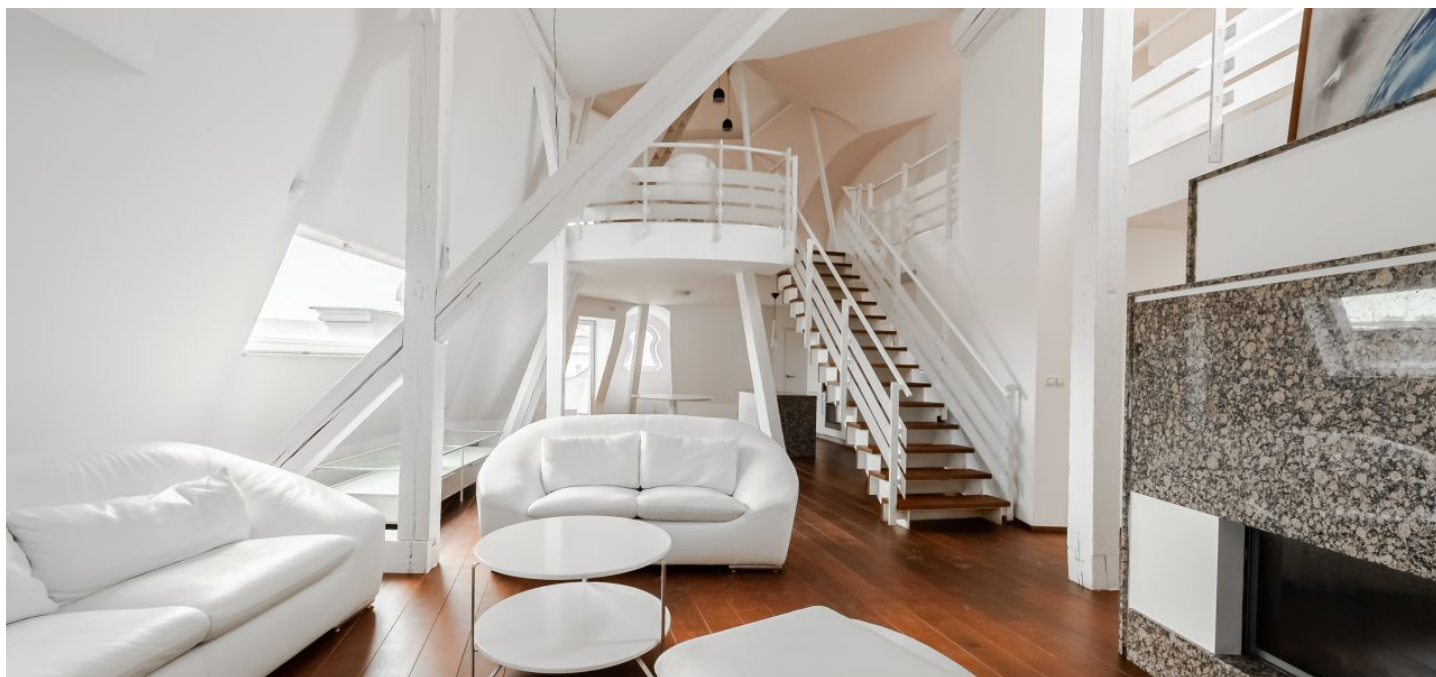




Apartment Four-bedroom (5+kk)

Rented

311 m², Prague 1, Staré Město, Věžeňská





Apartment Four-bedroom (5+kk)

Rented

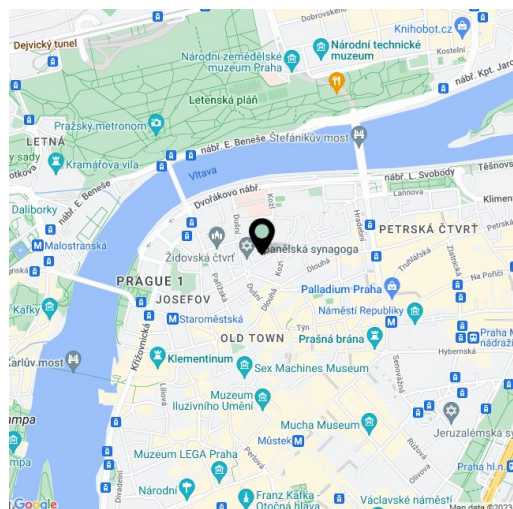
311 m², Prague 1, Staré Město, Věžeňská

| | |
|------------------|--|
| Total area | 319 m ² |
| Floor area* | 311 m ² |
| Terrace | 8 m ² |
| Parking | - |
| Cellar | - |
| Service price | Monthly deposit for service charges and water: CZK 4,000. Gas and electricity will be transferred to the tenant. |
| PENB | G |
| Reference number | 43993 |
| Available from | Immediately |

Boasting a terrace and a unique third level "tower" with panoramic views of Prague, this bright and spacious, semi furnished 3-4-bedroom 2-bathroom split-level apartment with direct access from the elevator is ideally located in the center of Prague, just a few steps from Old Town Square. Set on the 5th floor of a completely refurbished historic residential building with an elevator and preserved original details situated on a quiet street in the very heart of Old Town, moments from luxurious Pařížská Street, within walking distance of the Vltava riverbank, Letná Park, and the Staroměstská metro station.

The lower level includes an airy entrance hall, a living room with a fireplace, a fully fitted open plan kitchen and dining area, and 2 bedrooms (one with access to the terrace offering views of Prague Castle and Petřín Hill) a full bathroom, a walk-in closet, a toilet, and a utility room. The upper level holds a gallery comprising an open study/TV room, a third bedroom with 2 walk-in closets, and a full bathroom. Both bathrooms have baths with views of Prague. There is an attic "tower" with panoramic views, accessible from the gallery.

Air-conditioning, built-in storage and shelving, hardwood and exotic wood floors and stairs, Marmoleum flooring, granite finishes, built-in wardrobes, washing machine, dryer, security system. Elevator straight to the apartment.



* Area of the unit according to the Civil Code. The area consists of the sum total area of the entire unit bounded by perimeter walls.