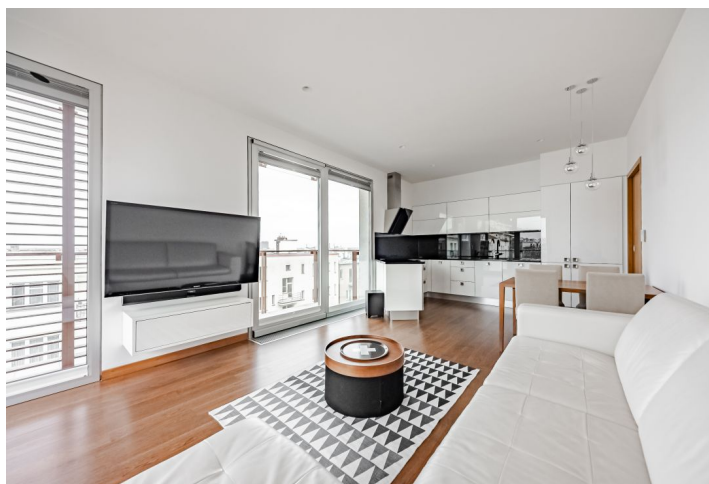




Apartment Two-bedroom (3+kk)

Sold

72 m², Prague 10, Vinohrady, Korunní





Apartment Two-bedroom (3+kk)

Sold72 m², Prague 10, Vinohrady, Korunní

Total area	88 m ²
Floor area*	72 m ²
Terrace	16 m ²
Parking	Garage parking space.
Garage	Yes
Cellar	Yes
PENB	C
Reference number	43995

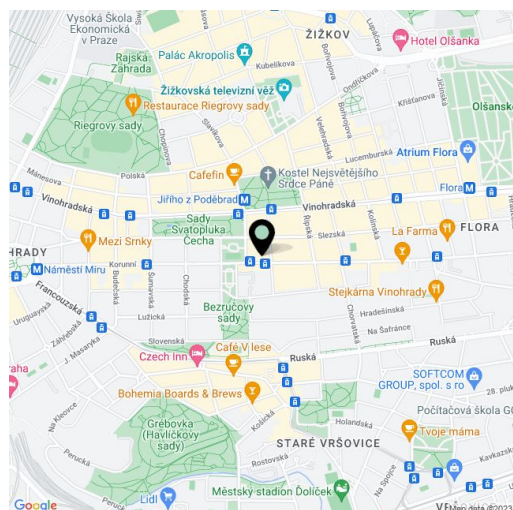
This bright apartment with a terrace and nice views of the garden and the surrounding area is located on the 4th floor of a building in the Korunní dvůr residential complex with a reception and an underground garage, where 1 space is reserved for the apartment. This attractive place in the wider city center is close to several parks and within easy reach of everything you need.

The layout offers a corner living room with a **terrace** and an adjoining kitchen, 2 bedrooms, a bathroom, a separate toilet, and a foyer.

The apartment is in **excellent condition**, as it was never used for permanent housing. Facilities include wooden floors, aluminum windows, and heated floors in the bathroom and toilet. The apartment boasts built-in wardrobes and a custom-made kitchen. **Security** entrance door. The purchase price includes a **garage space** and a **large cellar**, both accessible by **elevator**.

The complex from 2006 is located in a nice **green place** at the junction of Vinohrady, Žižkov, and Vršovice. A tram stop is a few steps from the residence, and the Flora metro station is also within walking distance, where the shopping and entertainment center with the same name also operates. There are many cafes, restaurants, small shops, and establishments in the immediate vicinity; a kindergarten and an elementary school are about a 7-minute walk away.

Floor area 68.21 m², balcony 15.96 m², cellar 3.7 m².



* Size of the unit according to the Housing Act.

The area consists of the sum total of the internal area of every room.



Apartment Two-bedroom (3+kk)

72 m², Prague 10, Vinohrady, Korunní

Sold

Korunní

1	Koupelna	4,00 m ²
2	Pokoj	14,77 m ²
3	Pokoj	14,27 m ²
4	Obývací pokoj	26,61 m ²
5	Předstíh	6,85 m ²
6	WC	1,71 m ²
7	Terasa	15,96 m ²
8	SKlep	3,70 m ²

