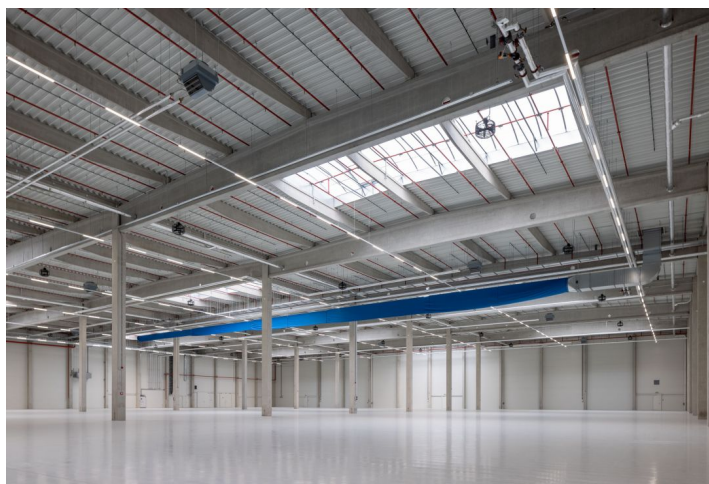




## Industrial space

3 358 m<sup>2</sup>, Ostrava-město, Ostrava, Na Rovince

Ask for price





## Industrial space

3 358 m<sup>2</sup>, Ostrava-město, Ostrava, Na Rovince

**Ask for price**

<b>Total area</b>	3 358 m <sup>2</sup>
<b>Available area for rent</b>	3 358 m <sup>2</sup>
<b>Ceiling height</b>	10.5 m
<b>Floor loading capacity</b>	5 t/m <sup>2</sup>
<b>Column grid structure</b>	—
<b>Structure</b>	Reinforced concrete structure
<b>PENB</b>	G
<b>Reference number</b>	44045

**3,358 sq.m.** of A class industrial, warehouse and office space for lease close to Ostrava. The premises are suitable for logistics centers and light manufacturing, offer a high standard of equipment, and can be designed based on specific requests and requirements.

### Location:

The park is located approx. 10 km from the center of Ostrava, in the vicinity of the D1 and D56 highways. The park is approx. 20 minutes from an international airport, 20 minutes from the border with Poland and 60 minutes from the border with Slovakia. Public transport in the area.

### Features and Services:

- Flexible units (storage / office / light production / showroom)
- Onsite property management
- 24/7 security service and CCTV
- Park maintenance
- Sufficient parking space
- High standard of building

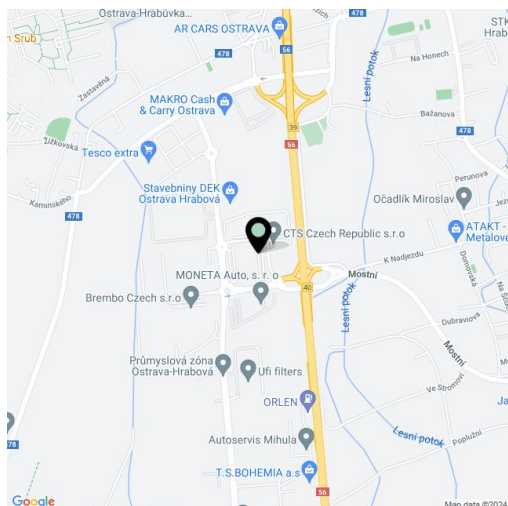
### Warehouse/Industrial space:

- 1 hydraulic ramp at about 600 m<sup>2</sup>
- Min. 1 direct entry to the unit
- Dimension of entrance gate 4x4,5 m
- Floor loading capacity 5 T/sq.m
- Clear height 10,5 m
- Column grid structure 12x24 m
- LED Light
- Sprinkler system
- Utility connections (water, sewage, gas, electricity)

### Office:

- Turn key office
- Clear height 2,75 m
- Air-conditioning
- External blinds

Lessee pays no commission.





# Industrial space

3 358 m<sup>2</sup>, Ostrava-město, Ostrava, Na Rovince

Ask for price

