

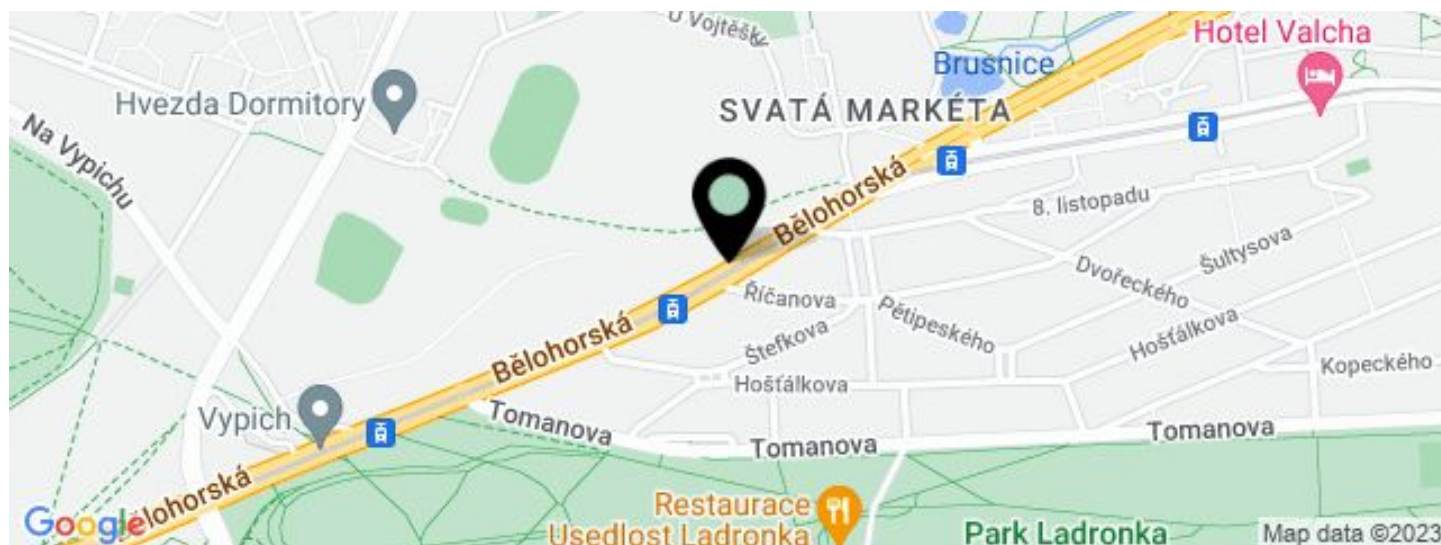


Office building

1 054 m², Prague 6, Břevnov, Bělohorská

€ 10.02 / m² | CZK 253 / m²



**Office building**1054 m², Prague 6, Břevnov, Bělohorská**€ 10.02 / m² | CZK 253 / m²**

UNIT	AVAILABLE AREA	SERVICES	PARKING	MONTHLY RENT
Office space	1054 m ²	4 EUR monthly per m ²	EUR 100 / pp / month - 6 parking places	€ 10 / m ²



Office building

1 054 m², Prague 6, Břevnov, Bělohorská

€ 10.02 / m² | CZK 253 / m²

Service price	4 EUR monthly per m ²
Total building area	1 054 m ²
Tenant consumption	—
Parking	100 EUR
Parking service charges	—
Parking ratio	—
Certification	—
PENB	C
Reference number	44150

Office space for lease in an office building located in a quiet area of Prague 6 within easy walking distance of Strahov Monastery and Hradčany. The space is suitable for the location of a bank branch, insurance company, etc. Warehouse spaces are also available in the building, including the possibility of 6 underground parking spaces.

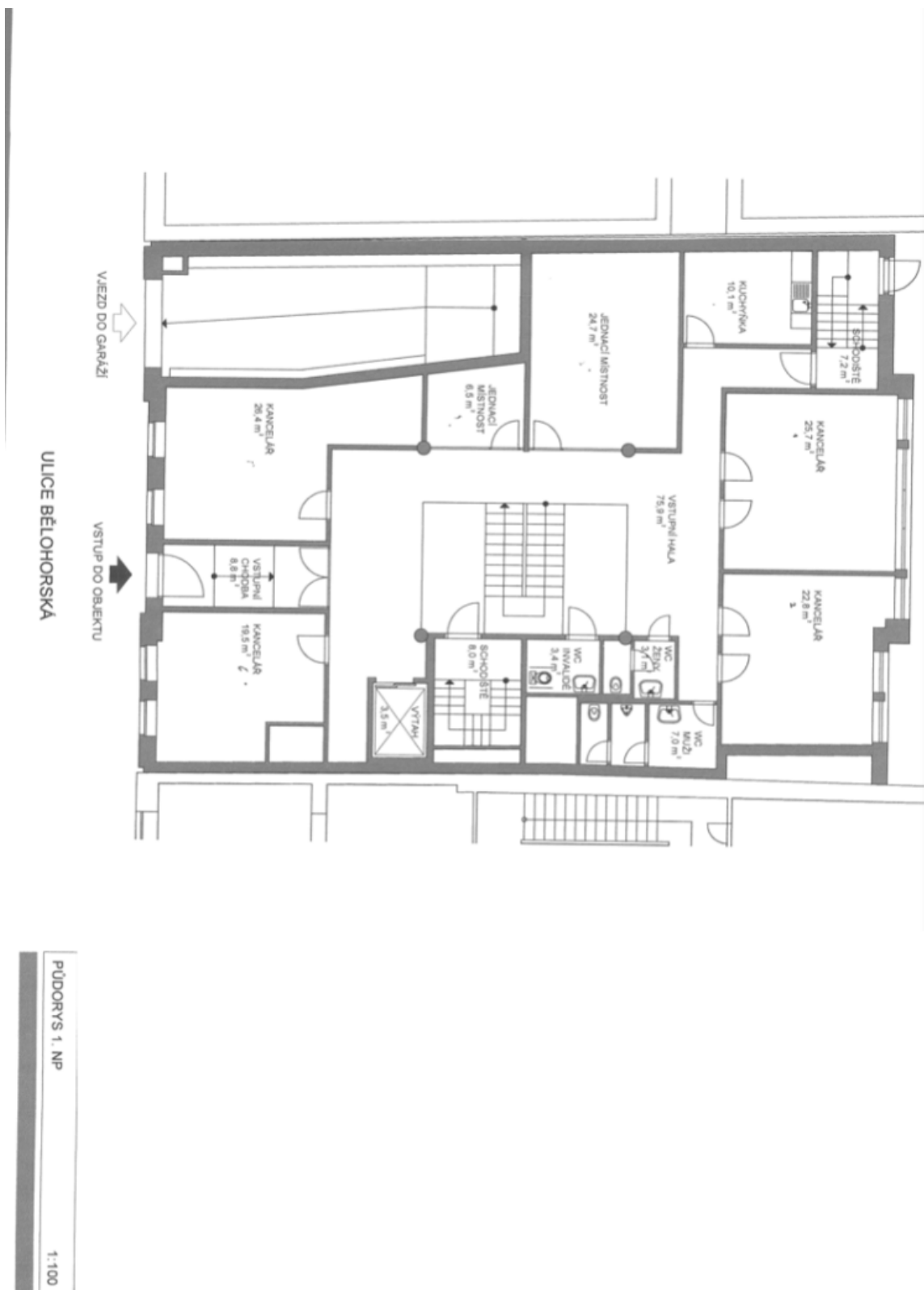
Location:

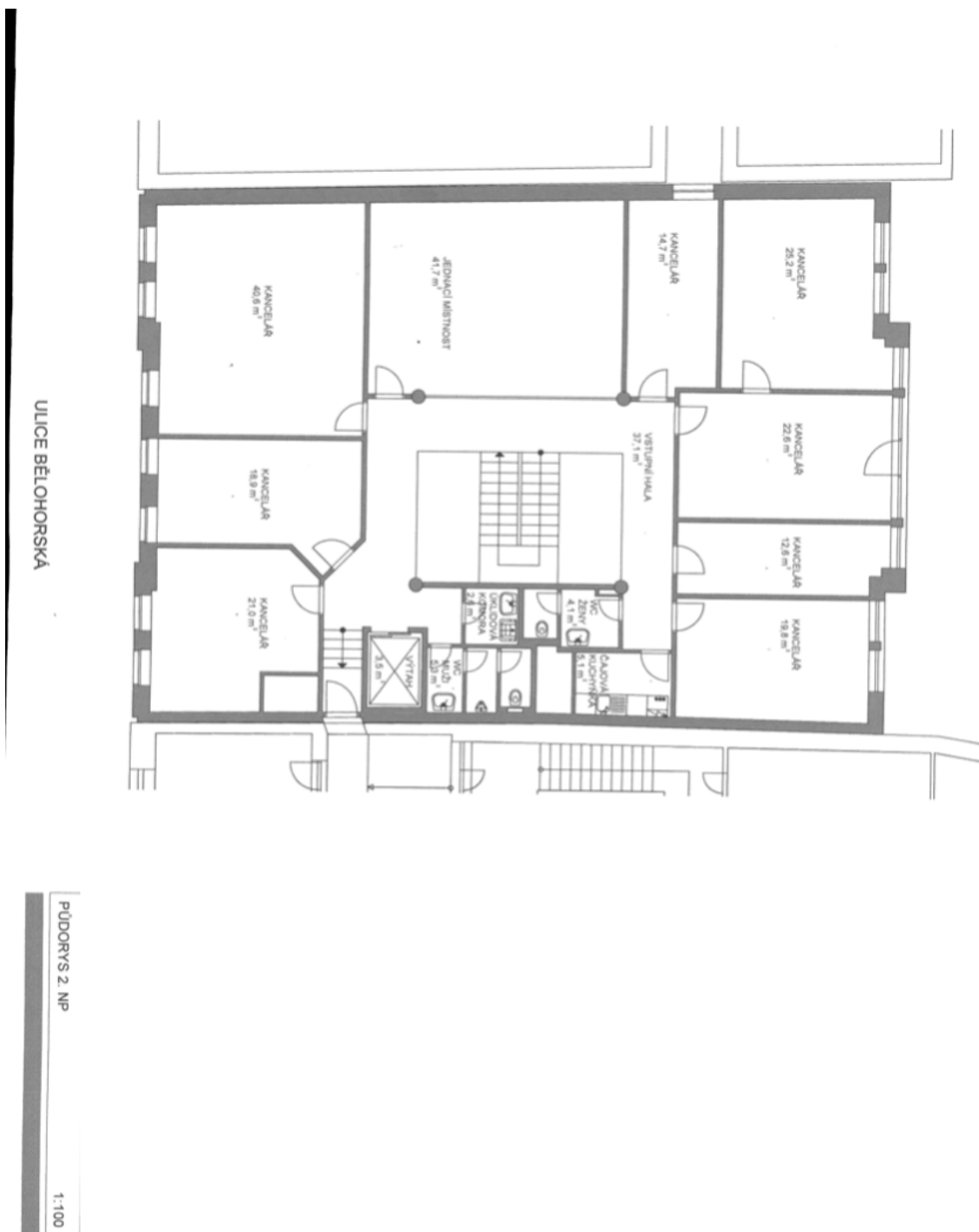
The building is easily accessible by car and public transport – in the vicinity of a tram stop with links to the Hradčanská and Malostranská (line A) metro stations. Pleasant surroundings with excellent amenities in the immediate vicinity of the building, full of restaurants, bank branches and other services.

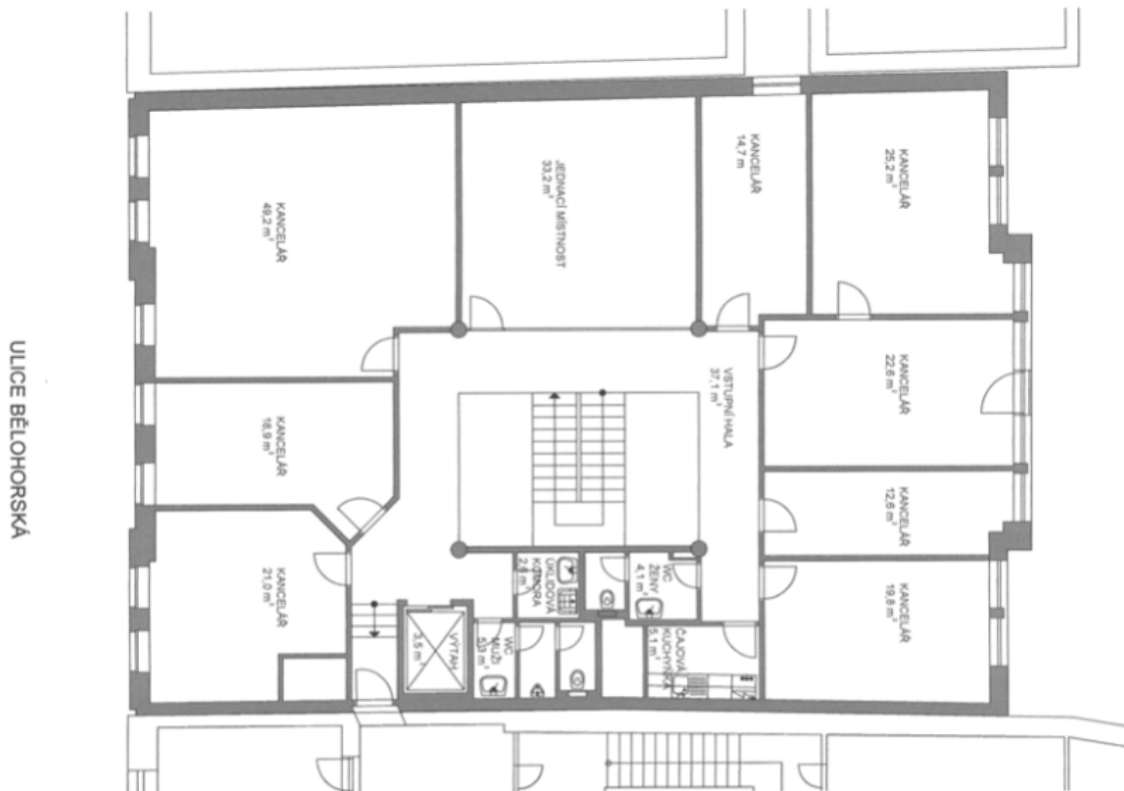
Features and Services:

- Elevator
- Reception
- Security
- Warehouse space
- Openable windows
- 6 parking places in the underground garage

Rental and service charges listed without VAT. Lessee pays no commission.







PŮDORYS 3. NP
1:100

