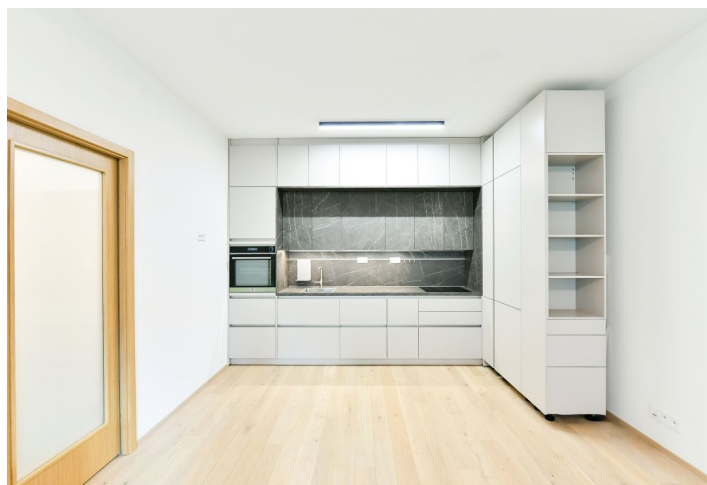




Apartment One-bedroom (2+kk)

€ 1 267 | CZK 32 000

64 m², Prague 6, Střešovice, Cukrovarnická





Apartment One-bedroom (2+kk)

€ 1 267 | CZK 32 000

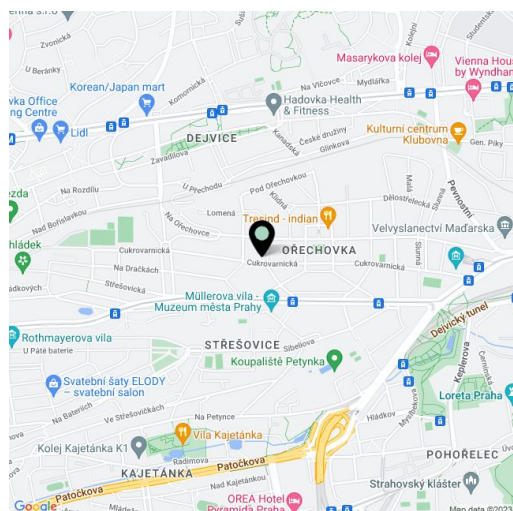
64 m², Prague 6, Střešovice, Cukrovarnická

| | |
|------------------|---|
| Total area | 64 m ² |
| Garden | 50 m ² |
| Parking | Garage parking. |
| Garage | Yes |
| Cellar | - |
| Service price | Monthly deposit for services, water, and heating CZK 5,700. Electricity is billed separately. |
| PENB | B |
| Reference number | 44154 |
| Available from | Immediately |

This semi-furnished apartment with a front garden and garage parking is situated on the ground floor of Maison Ořechovka - a high-quality contemporary residential complex with a 24/7 reception designed by the QARTA Architektura studio. Set in a premium location in the Ořechovka residential neighborhood in Prague 6, on the border of Střešovice and Dejvice, with plenty of greenery and within easy reach of amenities, international schools (The Riverside School Junior High, Park Lane, and the ISP International School of Prague), and the airport. The project was the winner in the category Real Estate Project of 2020 at The Best Project in the Czech Republic awards.

The interior features a living room with a fully fitted open plan kitchen and access to the **garden**, a bedroom, a bathroom with a walk-in shower, toilet, and bidet shower, a storage room, and an entrance hall.

Hardwood floors, large-format tiles, security entry door, automatic exterior blinds, washer/dryer, dishwasher, induction cooktop, alarm, robotic lawn mower, **cellar**, pram and bike storage, security cameras. A **garage parking** space is included.



* Area of the unit according to the Civil Code. The area consists of the sum total area of the entire unit bounded by perimeter walls.