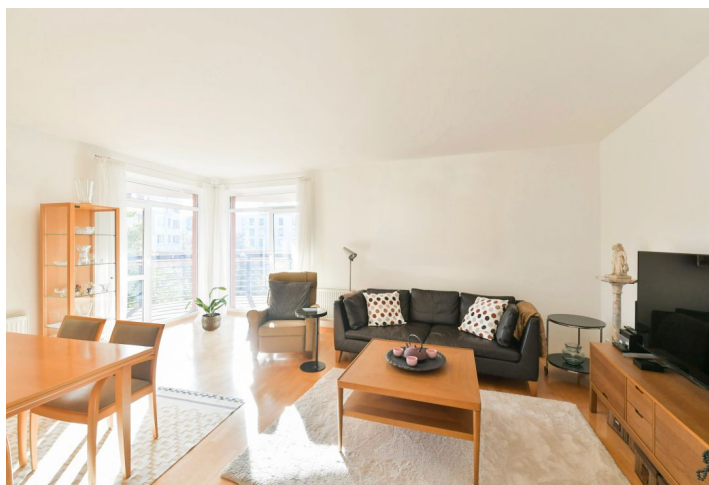
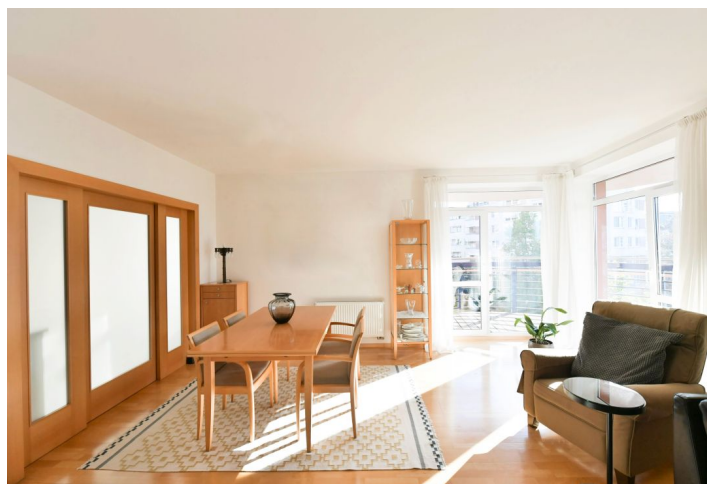
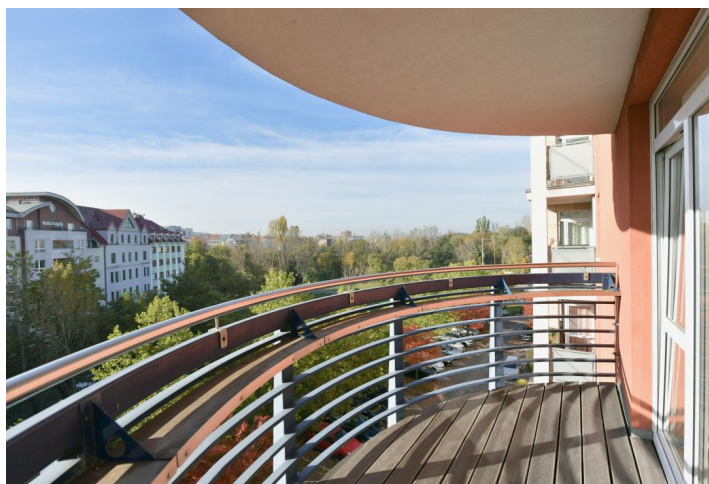




Apartment One-bedroom (2+1)

Rented

64 m², Prague 9, Vysočany, Nepilova





Apartment One-bedroom (2+1)

Rented

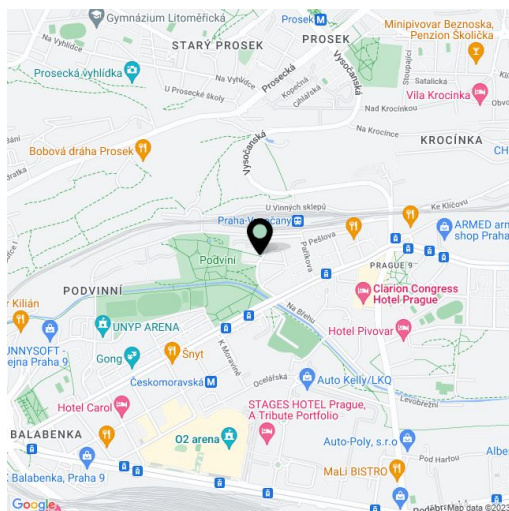
64 m², Prague 9, Vysočany, Nepilova

Total area	76 m ²
Floor area*	64 m ²
Balcony	12 m ²
Parking	Garage parking.
Cellar	-
Service price	Common building charges : CZK 5,500/month. Electricity is billed separately.
PENB	C
Reference number	44171
Available from	Immediately

This bright furnished 1-bedroom apartment with a balcony and green views is on the 4th floor of a modern residential building with a 24/7 reception, camera system and underground parking in Vysočany, Prague 9. Located in close vicinity of the English College in Prague, near the Podviní Park, in an area with full amenities and quick connection to the city center - just moments from Vysočanská metro station and trams, within walking distance of the Fenix shopping mall.

The south facing apartment offers a large living room with a balcony, a fully fitted kitchen with a dining area, a bedroom with a built-in wardrobe, a bathroom with a bathtub, a toilet, and an entrance hall with built-in wardrobes.

Hardwood floors, tiles, central heating, dishwasher, induction cooktop, microwave oven. Available from January 1, 2023.



* Area of the unit according to the Civil Code. The area consists of the sum total area of the entire unit bounded by perimeter walls.