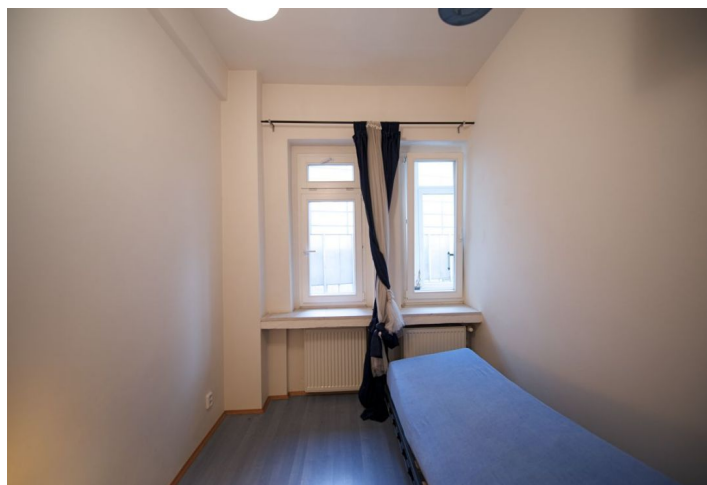




Apartment Two-bedroom (3+1)

€ 1 255 | CZK 31 000

105 m², Prague 1, Nové Město, Ostrovni





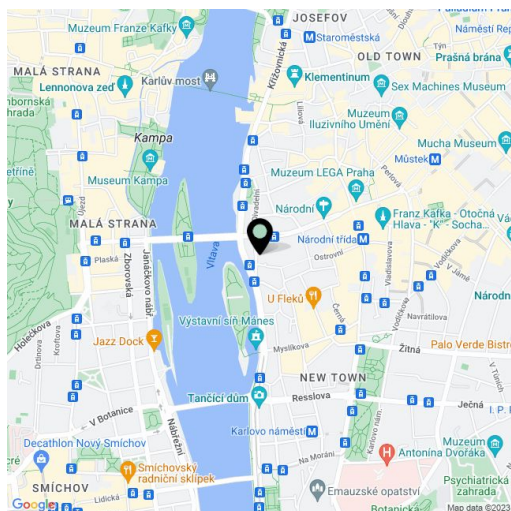
Apartment Two-bedroom (3+1)

€ 1 255 | CZK 31 000

105 m², Prague 1, Nové Město, Ostrovni

Total area	105 m²
Parking	-
Cellar	-
PENB	G
Reference number	4653
Available from	Immediately

Furnished renovated 2-bedroom 2-bathroom apartment with preserved original details in an unrenovated Functionalist building. Centrally located next to the National Theater, near the Vltava river, Old Town and Malá Strana with all the major historic sights and cultural venues. Very good public transportation connections, and lots of restaurants and cafes in the area. The right side of the flat is occupied by fully fitted kitchen with a nice bay window area, and bedroom with en-suite shower bathroom. On the left is dining hall, living room, 2nd bedroom, and bathroom with bath tub and toilet. There is utility room, separate toilet and built-in wardrobe in the entry hall. Parquet and tile floors, carpets, spacious rooms, large windows and glass doors, storage, washer, dishwasher, TV, DVD, Internet and satellite connection, alarm. Utilities are paid separately by the



* Area of the unit according to the Civil Code. The area consists of the sum total area of the entire unit bounded by perimeter walls.