



## Apartment Two-bedroom (3+kk)

€ 3 850 | CZK 97 000

140 m<sup>2</sup>, Prague 1, Josefov, Pařížská





## Apartment Two-bedroom (3+kk)

€ 3 850 | CZK 97 000

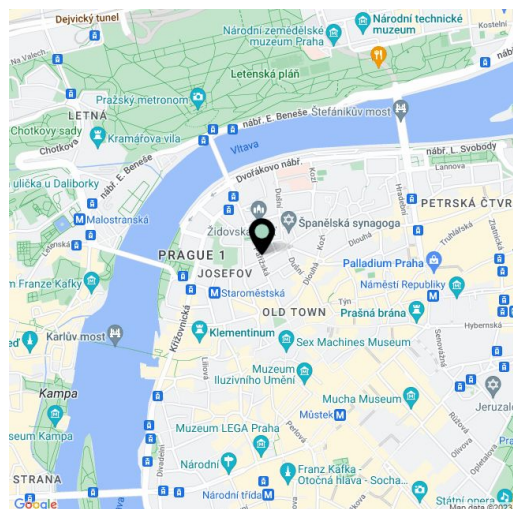
140 m<sup>2</sup>, Prague 1, Josefov, Pařížská

Total area	148 m <sup>2</sup>
Floor area*	140 m <sup>2</sup>
Balcony	8 m <sup>2</sup>
Parking	-
Cellar	-
Service price	Common building charges and Internet CZK 8,000/month. Utilities are paid separately.
PENB	Not required
Reference number	4709
Available from	15.08.2024

This high-end designer apartment in a prestigious historic location is situated on the 4th floor of a building with a daytime reception and an elevator, listed in the national heritage register. This fully refurbished and furnished apartment with 2 balconies is in one of the most beautiful buildings on one of the most desirable residential streets in Prague, mere steps from Old Town Square and the Vltava embankment.

Boasting a stylish interior by the renowned Donlic studio, the apartment has 2 balconies, a master bedroom with an en-suite bathroom and a walk-in closet, a second bedroom, a fully fitted open plan kitchen with Miele appliances, a living room, a dining area, plenty of built-in storage space, and a laundry and utility room.

Tasteful mix of modern and preserved original details, hardwood parquet floors, interior doors with etched glass panels, security entry door, bathroom underfloor heating, washer, dryer, satellite reception, alarm, elevator.



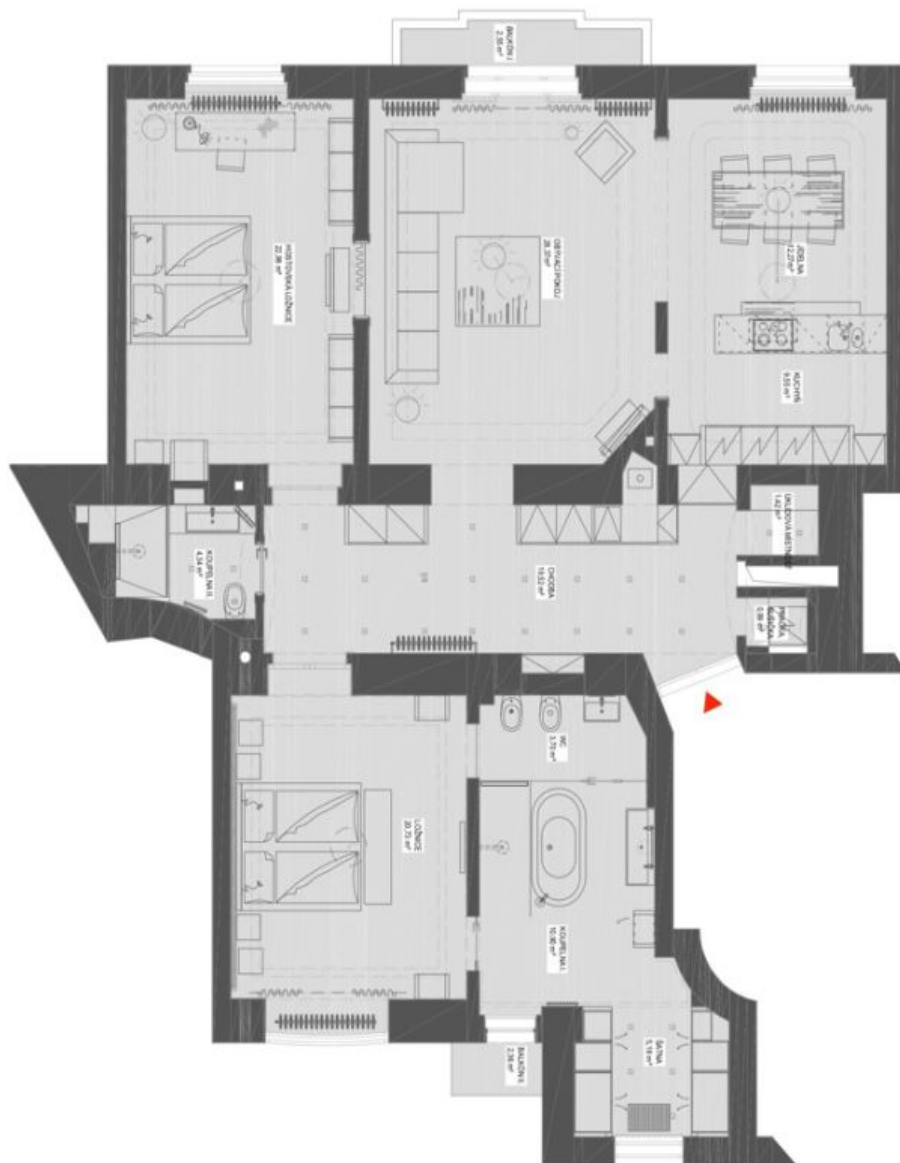
\* Area of the unit according to the Civil Code. The area consists of the sum total area of the entire unit bounded by perimeter walls.



## Apartment Two-bedroom (3+kk)

€ 3 850 | CZK 97 000

140 m<sup>2</sup>, Prague 1, Josefov, Pařížská



### 4. NADZEMNÍ PODLAŽÍ

Celková plocha bytu 139,95 m<sup>2</sup>

- 1 Kuchyň
- 1 Obývací pokoj
- 1 Jidelna
- 2 Ložnice
- 2 Koupelna
- 2 WC
- 1 Šatna
- 1 Chodba
- 2 Balkón (4,91 m<sup>2</sup>)