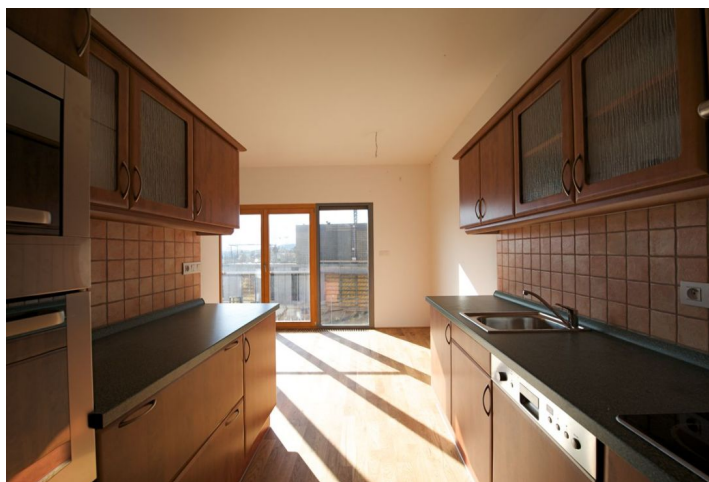




Apartment Three-bedroom (4+kk)

Rented

120 m², Prague 6, Dejvice, Na Míčáncce





Apartment Three-bedroom (4+kk)

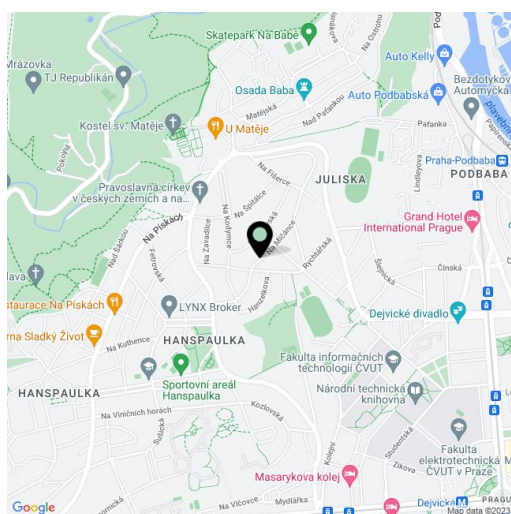
Rented120 m², Prague 6, Dejvice, Na Míčánce

Total area	120 m ²
Parking	One garage and one outside parking space included.
Cellar	-
PENB	G
Reference number	4732
Available from	Immediately

Modern high standard 3-bedroom 2-bathroom maisonette apartment with a garden on the ground and lower ground floor of a newly built residential villa designed by the famed Ing. arch. Ladislav Lábus AA studio. Located in the prestigious Prague 6 area, convenient to the international schools ISP and Riverside. Built on a gentle slope, and with terraces, balconies, loggias and oversized windows, the building provides exceptional views of the Prague panorama including the Prague Castle.

The flat is entered via a glass alcove above the garage which also serves as garden access (stairs). Upper level: living room with fully fitted kitchen with pantry, master bedroom with en-suite bathroom, extra toilet. Lower level: 2 bedrooms both with patio access, bathroom, boiler room with extra storage space.

Quality finishes and materials, wood floors, electric outdoor blinds and awning, storage, video entry phone, satellite and Internet connection, alarm. Monthly deposit for services and energy consumption approx. CZK 5.000.



* Area of the unit according to the Civil Code. The area consists of the sum total area of the entire unit bounded by perimeter walls.

