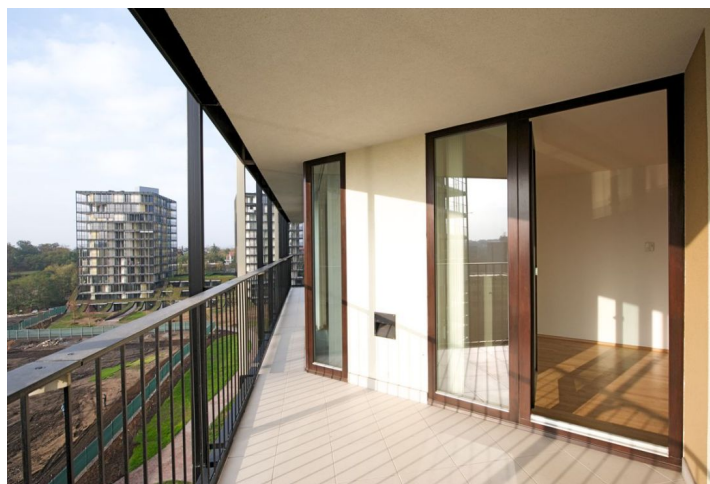




Apartment Two-bedroom (3+kk)

€ 1173 | CZK 29 000

92 m², Prague 3, Žižkov, Pitterova





Apartment Two-bedroom (3+kk)

€ 1 173 | CZK 29 000

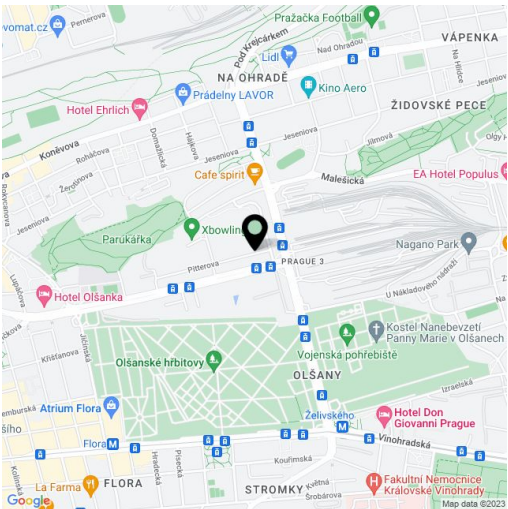
92 m², Prague 3, Žižkov, Pitterova

Total area	92 m²
Parking	1-2 on site parking spaces (one included).
Cellar	-
PENB	G
Reference number	4799
Available from	Immediately

South oriented 2-bedroom 2-bathroom flat with terrace situated on the 9th floor of a thirteen story tower in the CENTRAL PARK PRAHA residential project close to the Parukářka park. Located in the rapidly developing area of Žižkov, Prague 3, with quick connections to the city center (trams, a few stops to metro).

The modern interior is comprised of an open plan kitchen with dining and living area with views of the park-like inner courtyard with children's playgrounds, en-suite bathrooms, and utility room. The terrace is accessed through French doors from all the rooms offering views of the city and the surrounding greenery.

Floor to ceiling windows, vertical blinds, wood floors, security door, Internet and satellite connections, video entry phone, space for a built-in wardrobe in the entry hall. Two lifts, central reception. Building charges and utilities are billed separately.



* Area of the unit according to the Civil Code. The area consists of the sum total area of the entire unit bounded by perimeter walls.