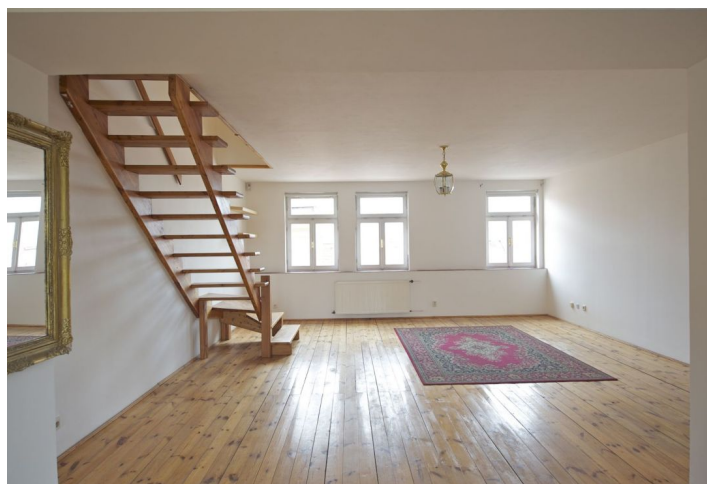




Apartment Three-bedroom (4+kk)

Rented

180 m², Praha 2, Vinohrady, Jana Masaryka





Apartment Three-bedroom (4+kk)

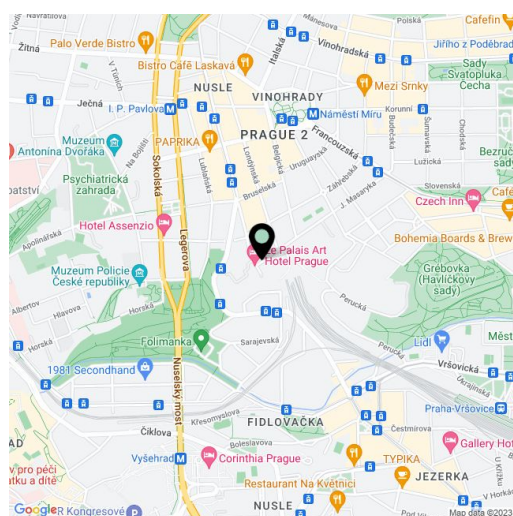
Rented180 m², Praha 2, Vinohrady, Jana Masaryka

Total area	180 m ²
Parking	Garage possible in the building next door for extra fee.
Cellar	-
PENB	G
Reference number	4802
Available from	Immediately

Duplex apartment with a spacious gallery, terrace and balcony, top of a charming 19th century building with a new façade and common garden. Close to public parks and the Náměstí Míru metro station and the center. Fourth floor with lift.

1ST LEVEL: entrance, living/dining area with open kitchen (60 sq.m.), toilet with basin, and a balcony overlooking the inner garden. 2ND LEVEL: has a separate bedroom - 23 m² with built-in wardrobes, bathroom with bath tub and toilet, spacious open living room - 43 m², and terrace with beautiful views of Petřín Hill and the Prague Castle. 3RD LEVEL: is a gallery (with windows) that can be used for a 2nd bedroom for guests. The flat is equipped with wood and tile floors, security door, ceramic stove, dishwasher, fridge and freezer, washer/dryer, telephone line, satellite TV connection, alarm, UPC cable and audio entry phone.

Common building charges CZK1000/1person. CZK 700/per month/ per any additional person. Utilities will be transferred to the tenant.



* Area of the unit according to the Civil Code. The area consists of the sum total area of the entire unit bounded by perimeter walls.