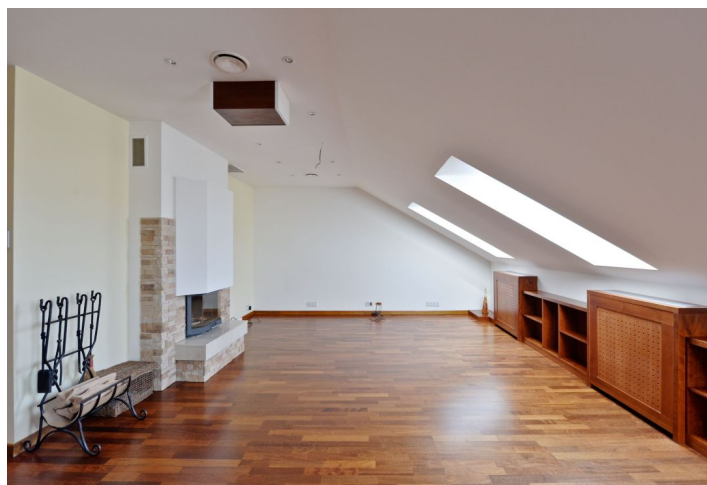
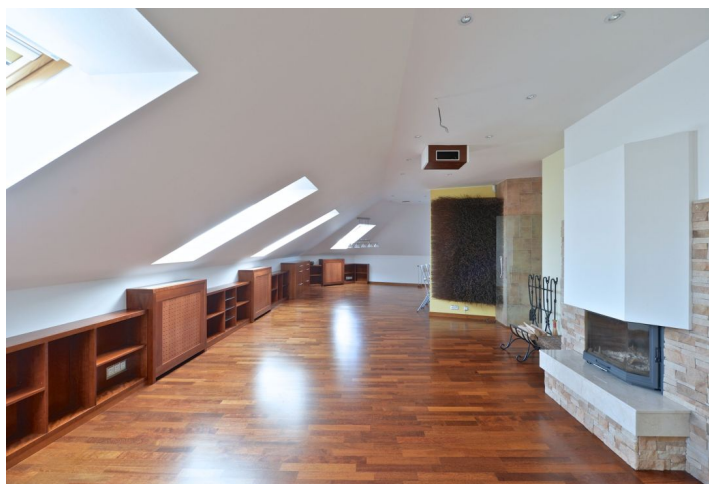




Apartment One-bedroom (2+kk)

Rented

125 m², Prague 2, Vinohrady, Londýnská





Apartment One-bedroom (2+kk)

Rented

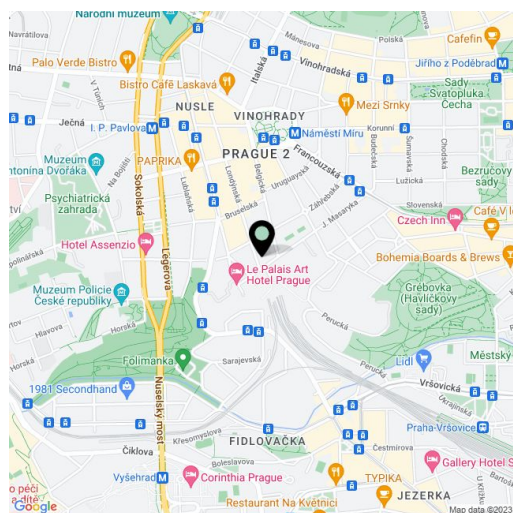
125 m², Prague 2, Vinohrady, Londýnská

Total area	250 m ²
Floor area*	125 m ²
Terrace	125 m ²
Parking	Garage parking.
Garage	Yes
Cellar	-
PENB	G
Reference number	487
Available from	Immediately

Largely benefiting from a 125 m² roof terrace and a double Jacuzzi, this partly furnished spacious 1-bedroom attic flat is situated on the 5th floor of a renovated traditional building with a lift in a beautiful tree-lined street. Located in the popular residential neighborhood of Vinohrady with quality restaurants, cafes and entertainment venues and very good connections to the city center - within walking distance of Náměstí Míru metro station and trams.

The interior features one bedroom with built-in wardrobes and an open bathroom incl. a jacuzzi for two, walk-in shower and a sink, there is a spacious living room with a fireplace and dining area, a fully fitted open kitchen, toilet, utility room, and entry hall with built-in storage. The terrace is accessed through a circular staircase and it provides panoramic views of Prague including the Prague Castle and Petřín Hill.

Full air-conditioning, wood parquet floors, heated tile floors, security door, gas boiler, washer, dishwasher, coffee machine, alarm, video entry phone, chip entry to the building, cellar. Garage parking available in the building opposite, at an extra charge. Monthly deposit for building charges and utilities CZK 4000 per month. Available from October 2016.



* Area of the unit according to the Civil Code. The area consists of the sum total area of the entire unit bounded by perimeter walls.