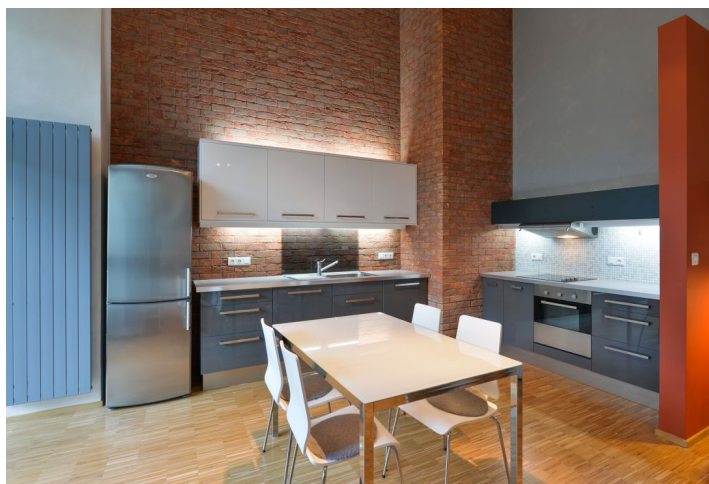
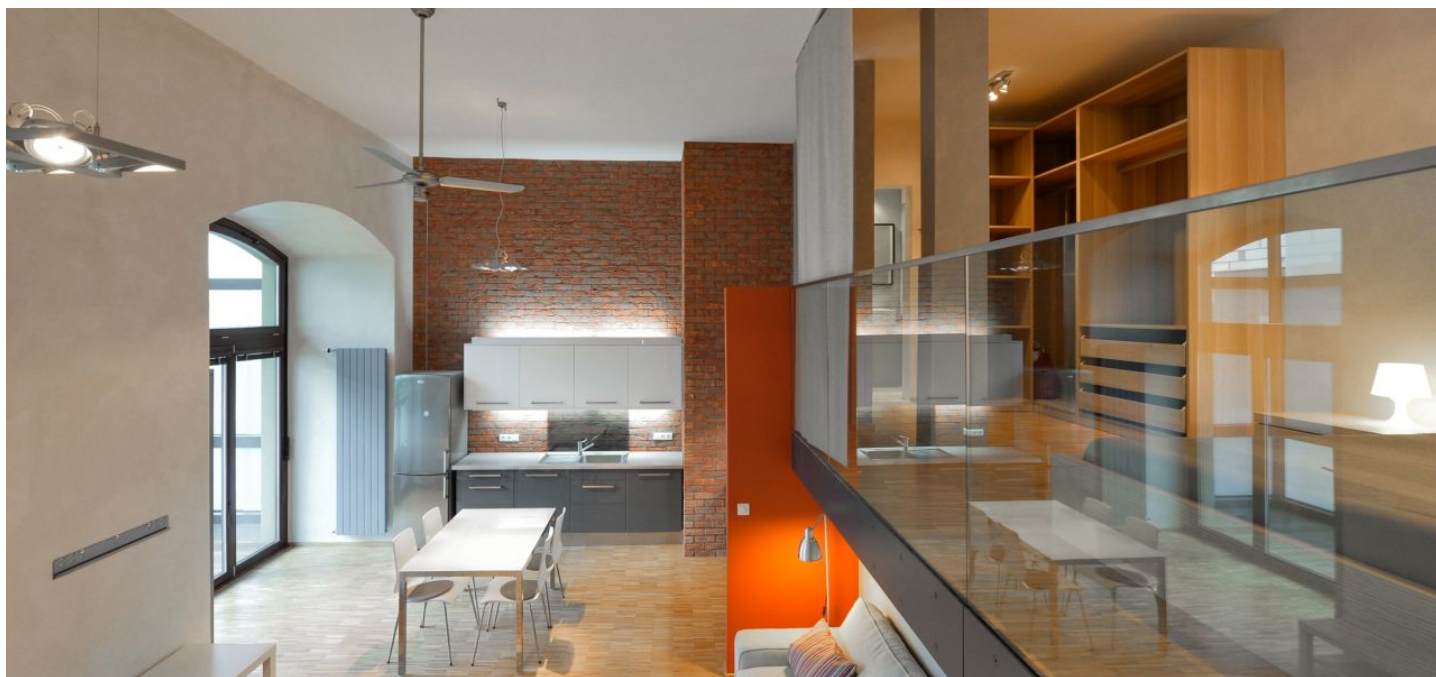




Apartment One-bedroom (2+kk)

Rented

73 m², Prague 8, Karlín, Šaldova





Apartment One-bedroom (2+kk)

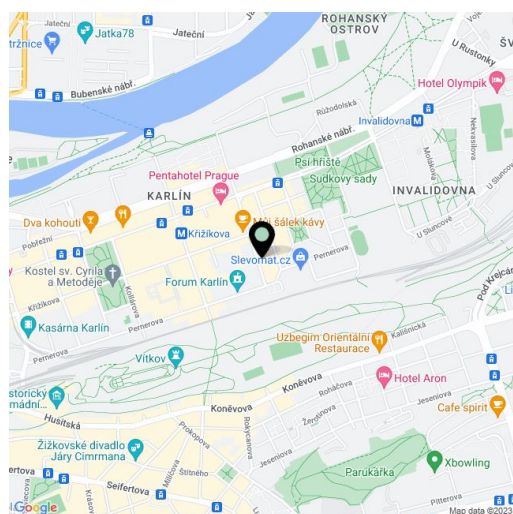
Rented73 m², Prague 8, Karlín, Šaldova

Total area	89 m ²
Floor area*	73 m ²
Terrace	16 m ²
Parking	Garage parking.
Garage	Yes
Cellar	Yes
Service price	Common building charges CZK 3,000/month. Deposit for gas and electricity CZK 3,000/month.
PENB	G
Reference number	4934
Available from	Immediately

This modern, fully furnished loft apartment with 2 bathrooms and a 16 sq. m. enclosed terrace is situated on the ground floor of a completely reconstructed industrial building converted into the Cornlofts Šaldova residential complex. Located on a quiet street in a rapidly developing Prague 8 area with full amenities within easy reach and quick connections to the city center, just three minutes from a tram stop and the Křižíkova metro station. Building amenities include an elevator, 24-hour security, security cameras, a shared green landscaped courtyard, and underground parking.

The interior consists of an open space living room with a fully fitted kitchen and access to the terrace, an open gallery bedroom with a shower bathroom, and a bathroom with bath, sink, and toilet situated at the entrance to the apartment. The terrace can be made fully private using four sliding glass panels.

Preserved original industrial features, security entry door, French windows leading to the terrace, **hardwood parquet floors**, tiles, built-in wardrobes, central heating, washer, dryer, dishwasher, satellite TV connection. 5 sq. m. basement storage unit (CZK 1,000/month). West-facing towards a quiet courtyard. One on-site **garage parking** space at CZK 3,000/month. Available from June 2023.



* Area of the unit according to the Civil Code. The area consists of the sum total area of the entire unit bounded by perimeter walls.



Apartment One-bedroom (2+kk)

Rented

73 m², Prague 8, Karlín, Šaldova

