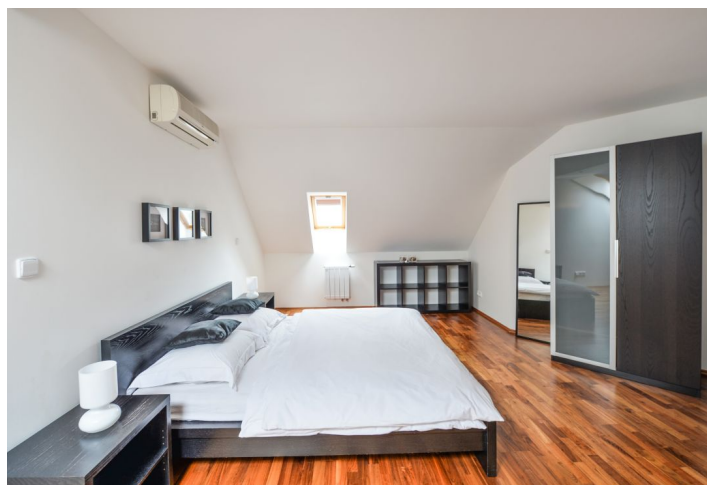
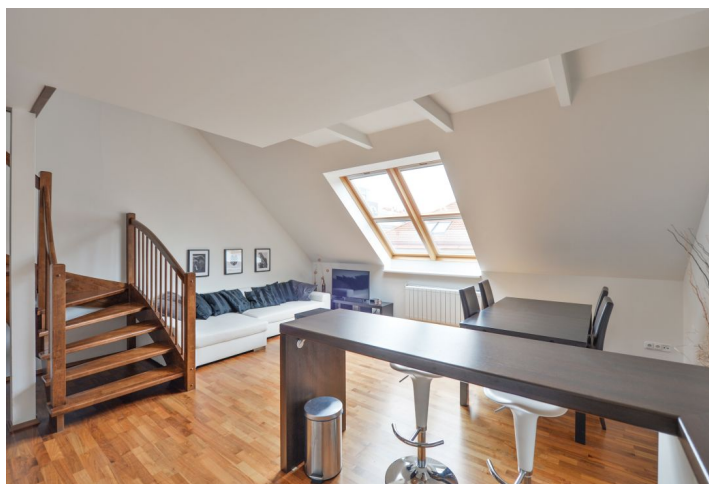




Apartment Two-bedroom (3+kk)

Rented

94 m², Praha 2, Vinohrady, Mikovcova





Apartment Two-bedroom (3+kk)

Rented

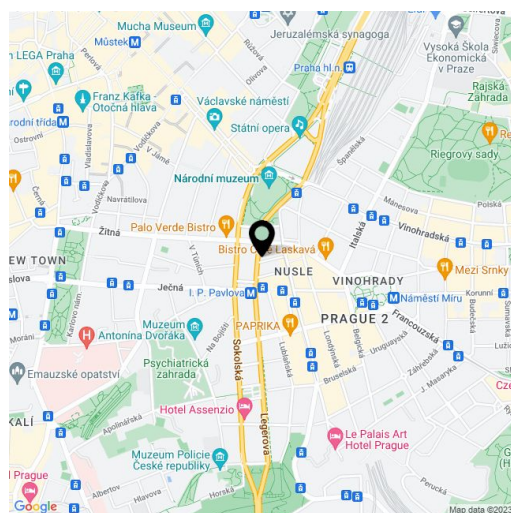
94 m², Praha 2, Vinohrady, Mikovcova

Total area	94 m ²
Parking	Parking is available in the underground garages of a nearby building for an extra fee.
Cellar	-
PENB	G
Reference number	5014
Available from	Immediately

Stylish fully furnished two-level 2-bedroom attic flat on the 4th floor of a completely renovated building with a lift. Located on the border of Vinohrady and Nové Město, close to Wenceslas Square and I. P. Pavlova metro station.

The lower level is comprised of living room with open plan kitchen, hall, and guest toilet. On the upper level are 2 bedrooms and a spacious bathroom with both shower and a bath tub.

Wood floors and staircase, air-conditioning unit in each room, fully equipped kitchen designed in a Dutch style. Common building charges CZK 2350/month. Utilities will be transferred to the tenant's name.



* Area of the unit according to the Civil Code. The area consists of the sum total area of the entire unit bounded by perimeter walls.