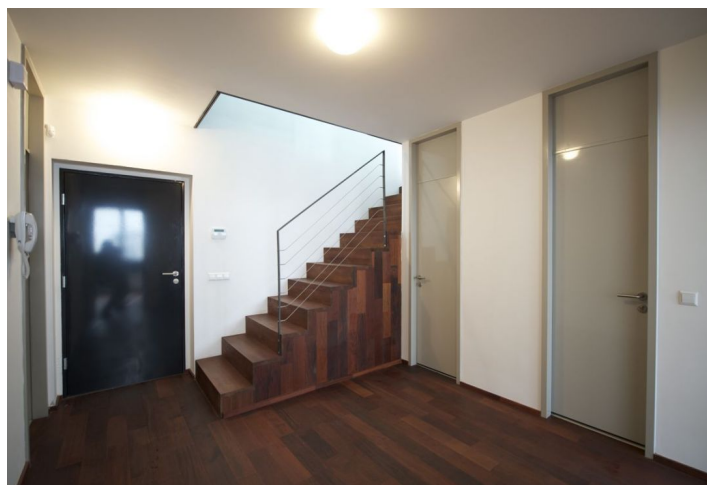




Apartment Three-bedroom (4+1)

€ 1 214 | CZK 30 000

123 m², Prague 7, Holešovice, Osadní





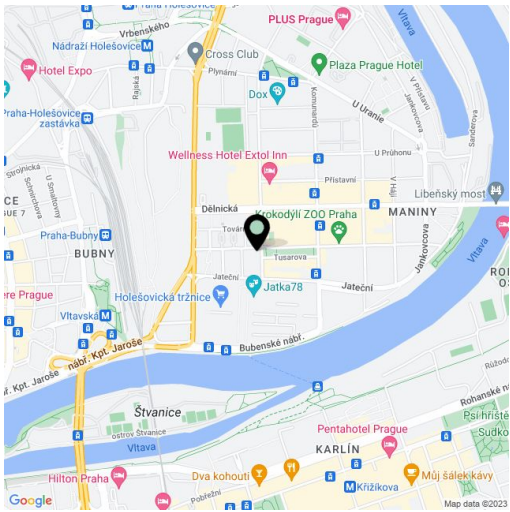
Apartment Three-bedroom (4+1)

€ 1 214 | CZK 30 000

123 m², Prague 7, Holešovice, Osadní

Total area	123 m²
Parking	Garage parking space available at CZK 3.000/month.
Cellar	-
PENB	G
Reference number	5040
Available from	Immediately

Stylishly designed 3-bedroom 2-bathroom split-level atelier with 2 terraces situated on the 2nd and 3rd floors of a completely renovated industrial building from 1898. Located in a dynamically developing area of Prague 7 with good connections to the city center. The upper floor features a living room with access to the terrace, fully fitted kitchen, one bedroom and a bathroom. The lower level holds two bedrooms, 2nd terrace, spacious bathroom, walk-in closet, storage room, and a guest toilet. Basement storage space available. The entire building was designed by the prestigious Olgoj Chorchoj architectural studio, and transformed into a multifunctional building offering a café, gallery, ateliers, offices, shops, apartments and garage parking. Monthly deposit for services and utilities (reception, water, electricity, heating) CZK 9.225. Can be rented as an office.



* Area of the unit according to the Civil Code. The area consists of the sum total area of the entire unit bounded by perimeter walls.