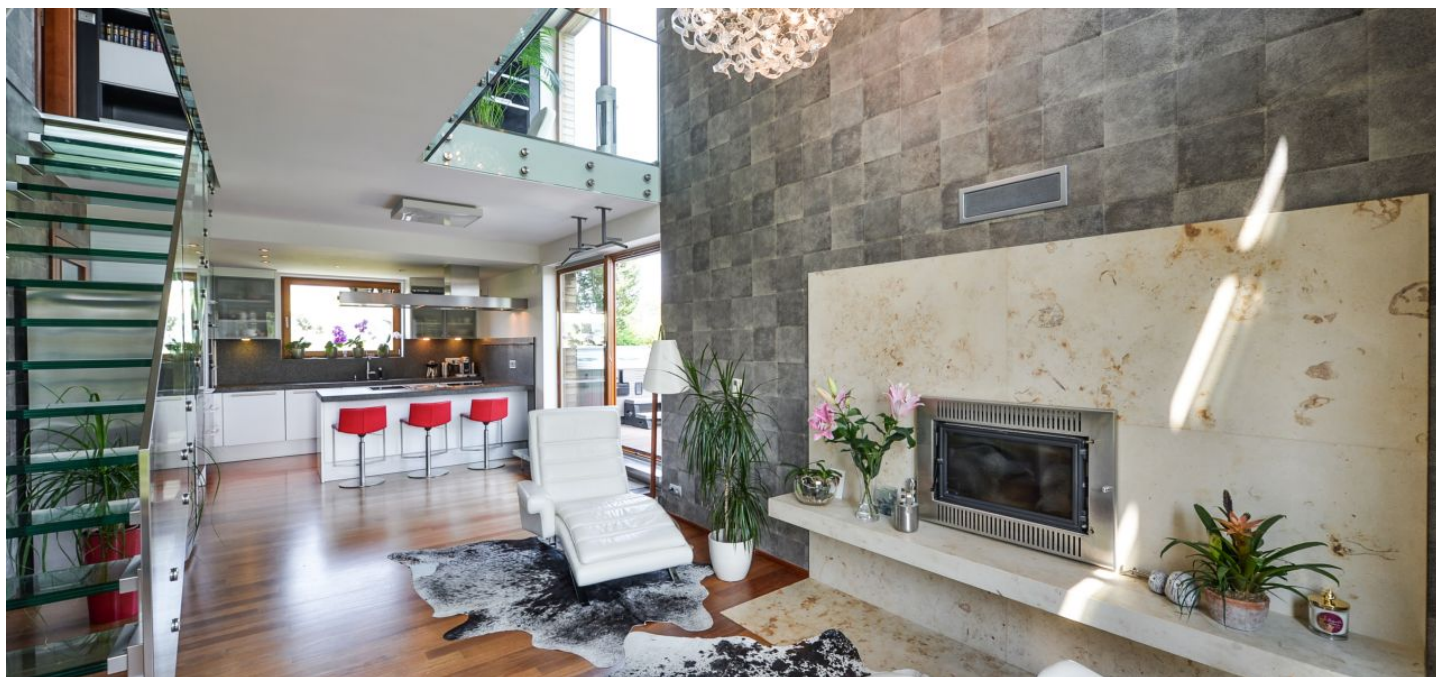




Apartment Two-bedroom (3+kk)

Sold

120 m², Praha 5, Košíře, Linhartova



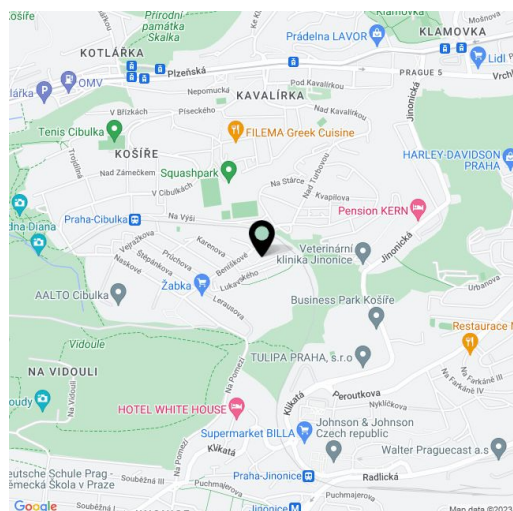


Apartment Two-bedroom (3+kk)

Sold120 m², Praha 5, Košíře, Linhartova

Total area	170 m ²
Floor area*	120 m ²
Terrace	50 m ²
Parking	Two garage parking spaces included in the price.
Garage	Yes
Cellar	Yes
Service price	6 000 CZK monthly
PENB	G
Reference number	5141

Modern two-level apartment with a spacious terrace situated on the top floor of a new residential project surrounded by greenery. Great location on a hill offering stunning views of the city center. Kindergarten and primary school close by (approx. 200 m). The lower floor consists of a living room with dining area and kitchen, access to the large southeast oriented terrace with whirlpool, and a guest bathroom. The upper floor offers an open-plan gallery with home office, 2 bedrooms, 2 en-suite bathrooms and walk-through closet. The equipment includes Italian marble floors, Merbau wood floors, Hansgrohe and Villeroy&Boch bathroom fittings, outdoor wooden blinds, Poggenpohl kitchen, floor heating in bathrooms, fireplace, air conditioning, air recovery system, video entry phone. The purchase price includes all equipment and furnishing, 2 garage parking spaces and a cellar. Interior 120 m², terrace 50 m².



* Area of the unit according to the Civil Code. The area consists of the sum total area of the entire unit bounded by perimeter walls.