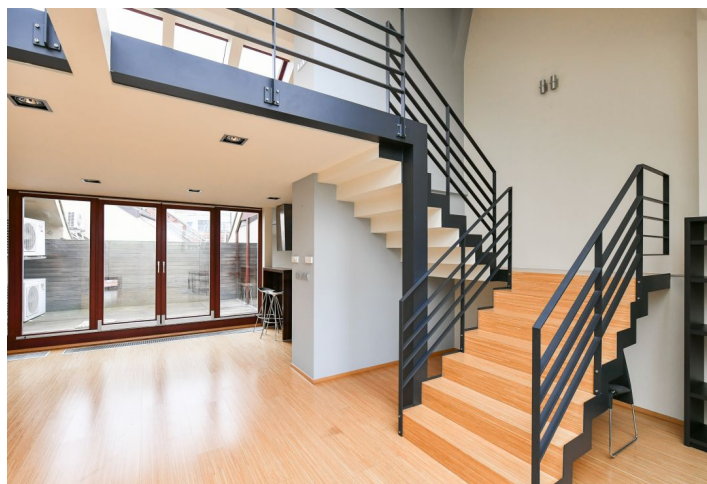




Apartment Three-bedroom (4+kk)

€ 2 257 | CZK 57 000

220 m², Prague 1, Nové Město, Černá





Apartment Three-bedroom (4+kk)

€ 2 257 | CZK 57 000

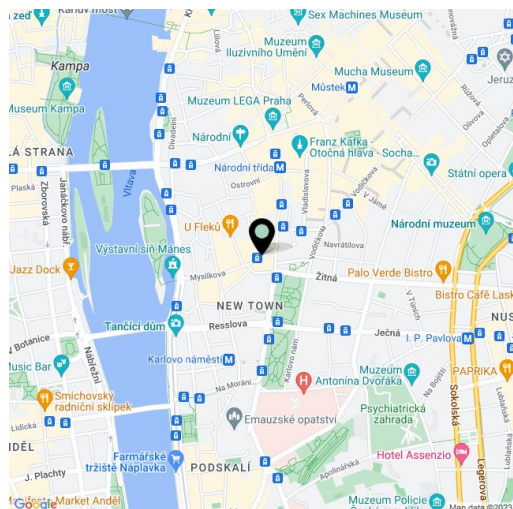
220 m², Prague 1, Nové Město, Černá

Total area	230 m ²
Floor area*	220 m ²
Terrace	10 m ²
Parking	-
Cellar	-
Service price	Monthly deposit for services and water: CZK 9,000. Electricity and gas are billed separately.
PENB	Not required
Reference number	5217
Available from	Immediately

Split-level attic apartment designed by an architect with a terrace. This partially furnished 2-bathroom apartment on the 6th floor of a well-maintained renovated residential building with an elevator is conveniently located for shopping, quality restaurants, bars, and bistros, within easy reach of major public transportation links (trams, metro), on a quiet street in the center of Prague, just a short walk from Charles Square with the Karlovo náměstí metro station, and within walking distance of Wenceslas Square.

The lower level includes a large living room with a fully fitted open plan kitchen and a glass wall with access to the **terrace**, 2 bedrooms (one can be used as an office or a guest bedroom), a bathroom with a bathtub and a walk-in shower, an entrance hall with built-in storage, and a separate toilet. Upstairs, there is a spacious open **gallery** with a study and a corner kitchen, and a master bedroom with an en-suite bathroom.

Air-conditioning, good quality **hardwood floors**, tiles, ample built-in wardrobes, security entry door, gas boiler, washing machine, dishwasher, microwave oven, TV, surround system. **Parking** is available in a public garage on Karlovo Náměstí Square (at an extra cost).



* Size of the unit according to the Housing Act.

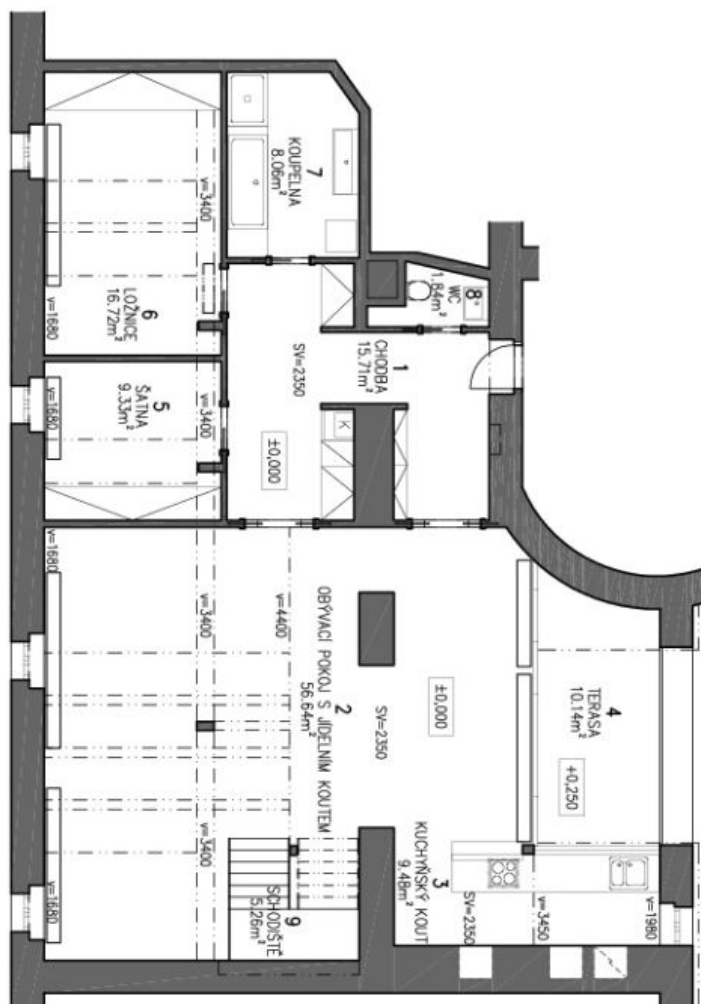
The area consists of the sum total of the internal area of every room.



Apartment Three-bedroom (4+kk)

€ 2 257 | CZK 57 000

220 m², Prague 1, Nové Město, Černá



PŮDORYS SPODNÍ ČÁSTI BYTU

M 1:100

01/2014

