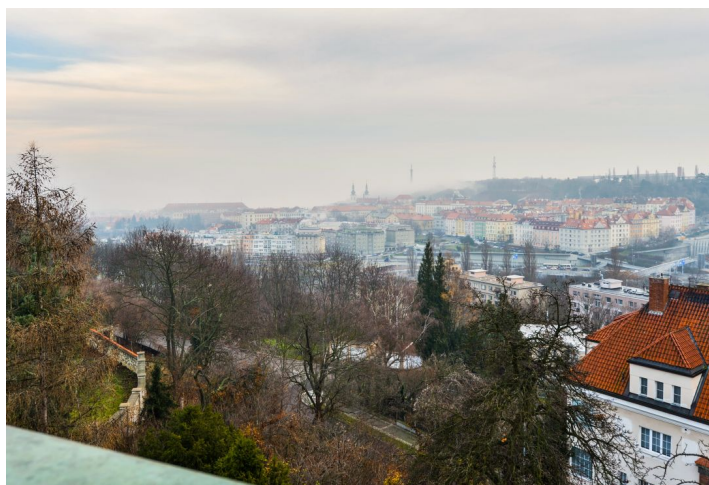




Apartment Four-bedroom (5+1)

Rented

178 m², Prague 6, Střešovice, Farní





Apartment Four-bedroom (5+1)

Rented

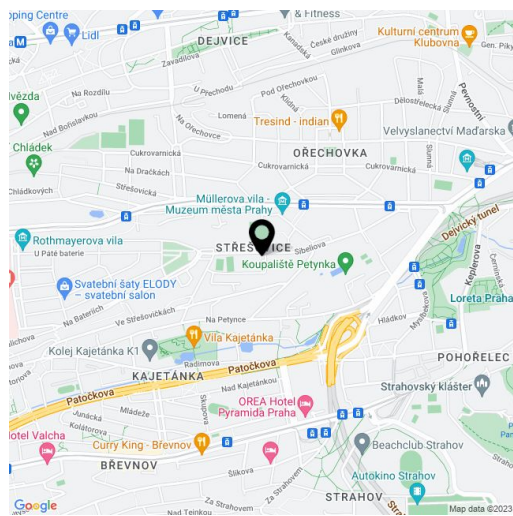
178 m², Prague 6, Střešovice, Farní

| | |
|------------------|--------------------|
| Total area | 178 m ² |
| Parking | Garage parking. |
| Garage | Yes |
| Cellar | - |
| PENB | G |
| Reference number | 5239 |
| Available from | Immediately |

This is a semi furnished 4-bedroom 2-bathroom split-level apartment with a balcony. Situated on the 2nd floor of a 1930's villa in a quiet residential neighborhood with lots of greenery, within walking distance of the Prague Castle. The Park Lane International School is located 300 m from the building, a close-by tram stop provides connections to Hradčanská metro station. Conveniently located for numerous international schools and the airport.

The lower level is comprised of a living room with a fireplace, bay windows offering panoramic views and a Merbau floor, a fully fitted kitchen with a natural stone worktop, a master bedroom with a balcony and a walk-in closet, a guest bedroom, a bathroom, a toilet, a spacious entrance hall, a walk-in closet and a laundry room. The upper floor includes a gallery, an attic bedroom, a bright study with lots of windows, and a bathroom.

Beautiful views of the Prague Castle and the Petřín Hill, air-conditioning, built-in wardrobes and storage, hardwood floors, heated natural stone floors in the kitchen and bathrooms, gas boiler, security entry door, dishwasher, washer, dryer, alarm, TV. No lift. Service charges and utilities: CZK 10,000 per month. The apt. can be rented without furniture.



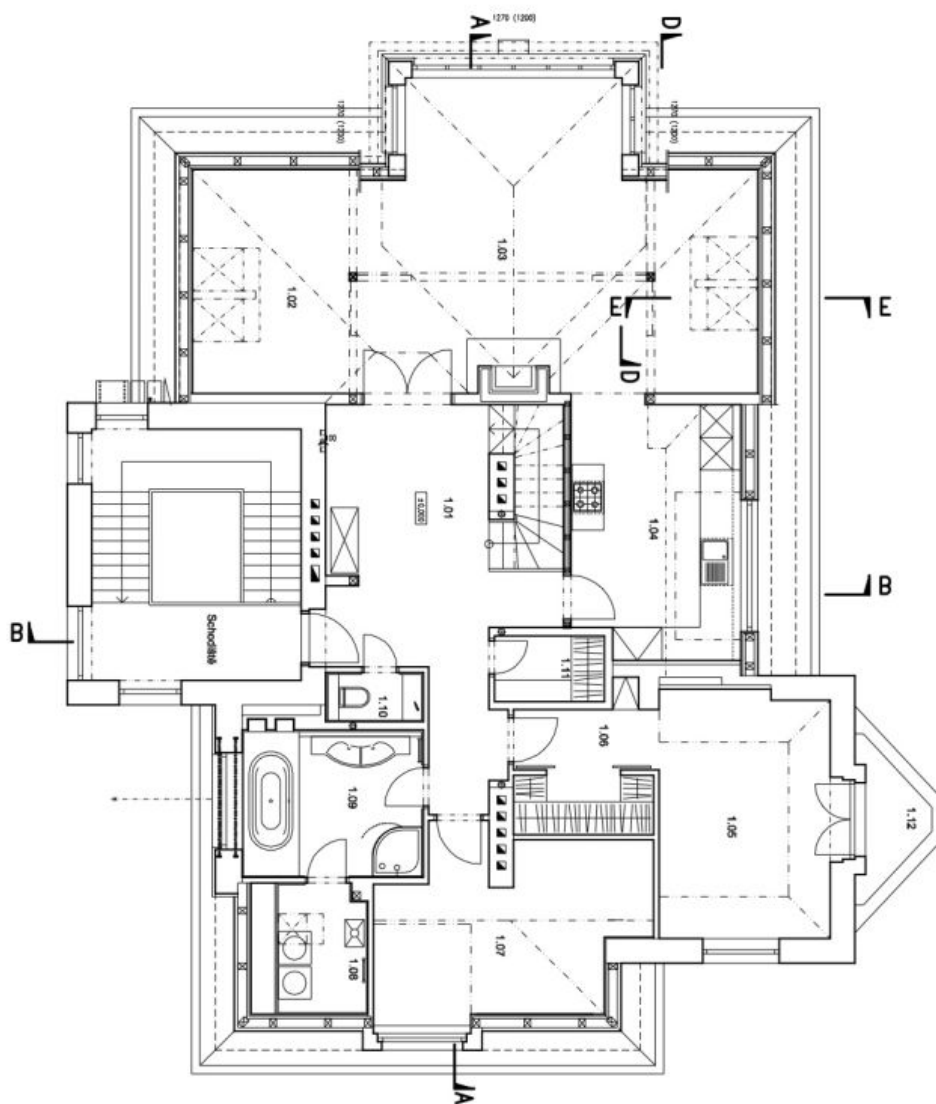
* Area of the unit according to the Civil Code. The area consists of the sum total area of the entire unit bounded by perimeter walls.



Apartment Four-bedroom (5+1)

178 m², Prague 6, Střešovice, Farní

Rented





Apartment Four-bedroom (5+1)

178 m², Prague 6, Střešovice, Farní

Rented

