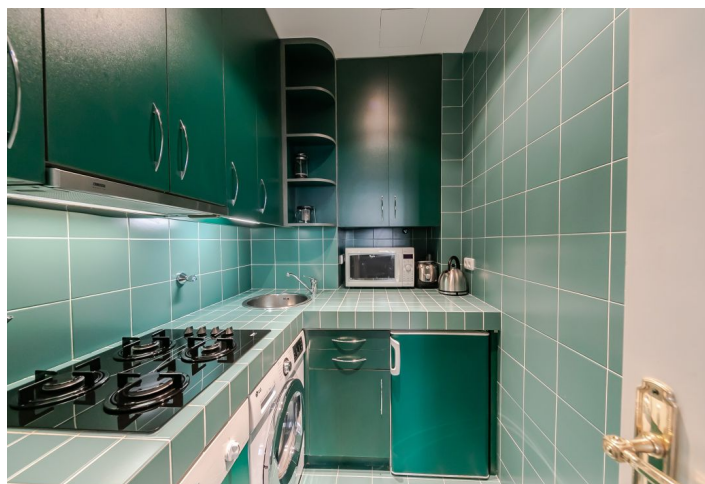




Apartment One-bedroom (2+1)

Rented

54 m², Praha 5, Smíchov, Janáčkovo nábřeží





Apartment One-bedroom (2+1)

Rented54 m², Praha 5, Smíchov, Janáčkovo nábřeží

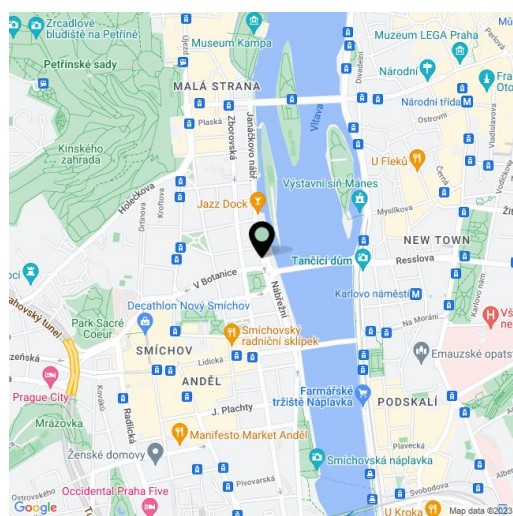
Total area	54 m ²
Parking	Parking available 300 m from the building.
Cellar	-
PENB	G
Reference number	5283
Available from	Immediately

Elegant, fully furnished 1-bedroom flat on the upper ground floor of a completely renovated Neo-Baroque building with lift and lots of preserved architectural details. Situated on the Vltava embankment, right across the river from the National Theatre, with great transportation connections. Excellent location in the city center, a minute walk to Malá Strana and a few more to the Old Town.

The flat has a living room, fully fitted and equipped kitchen, bedroom, shower bathroom with Italian tiling, and a walk-in closet.

high ceilings, and large windows.

Quality materials, high ceilings, large windows, built-in wardrobes, parquet floors, dishwasher, washer/dryer, gas heating, TV, DVD, telephone line, Internet and satellite TV connection. Service charges and water CZK 1,200/month. Utilities are billed separately.



* Area of the unit according to the Civil Code. The area consists of the sum total area of the entire unit bounded by perimeter walls.



Apartment One-bedroom (2+1)

54 m², Praha 5, Smíchov, Janáčkovo nábřeží

Rented

