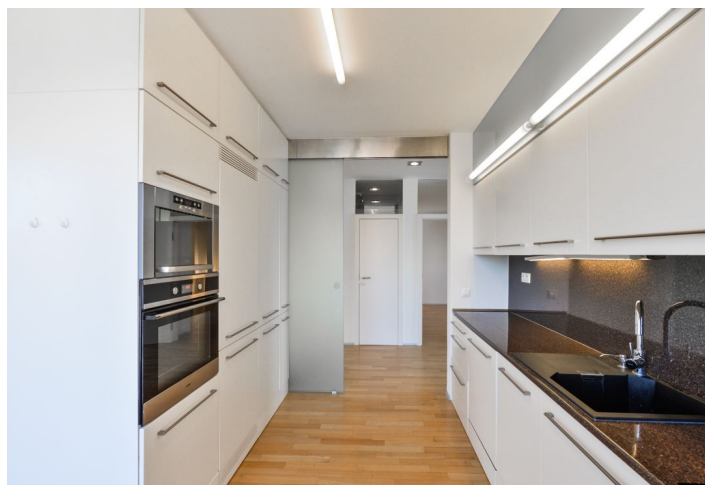
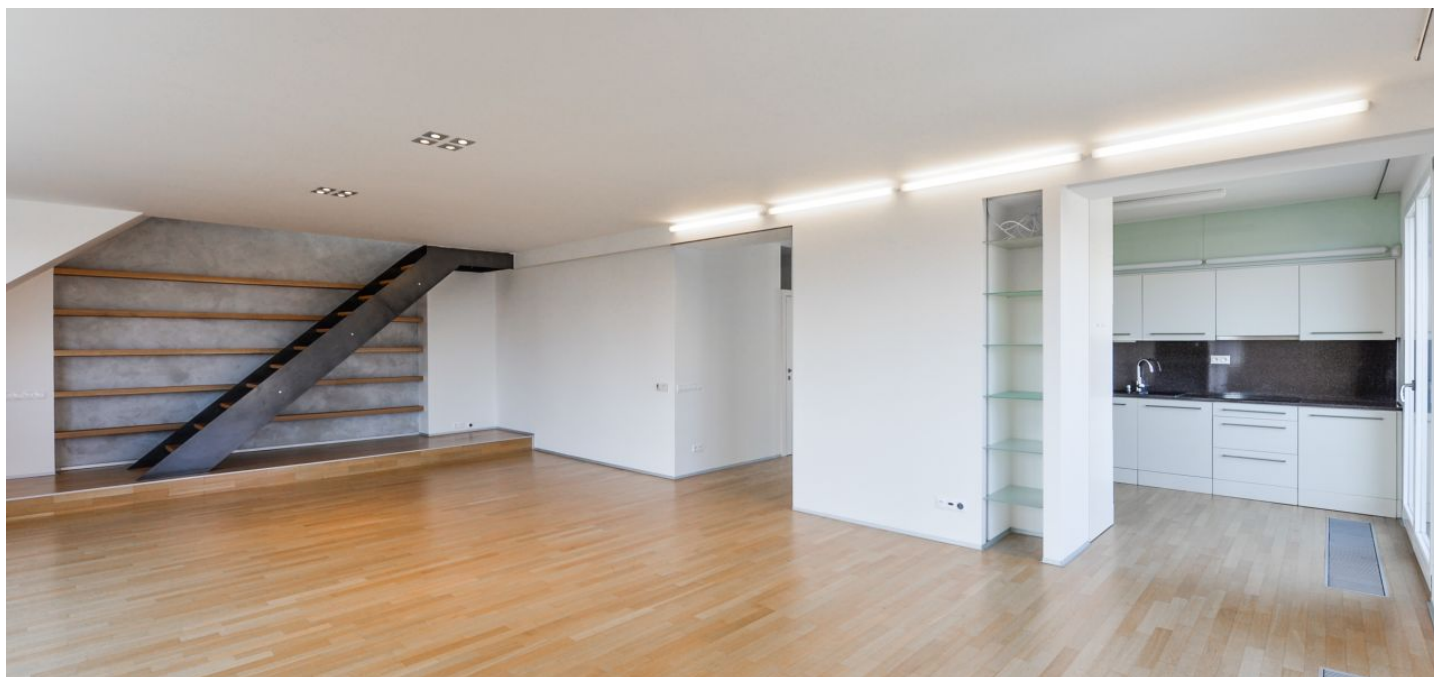




## Apartment Two-bedroom (3+kk)

Rented

110 m<sup>2</sup>, Praha 6, Dejvice, Na Kuthence





## Apartment Two-bedroom (3+kk)

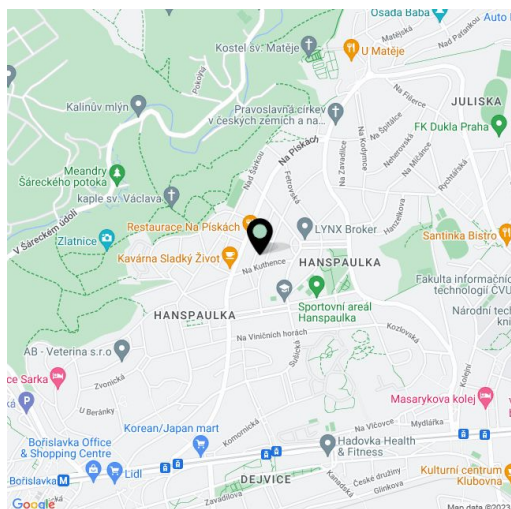
**Rented**110 m<sup>2</sup>, Praha 6, Dejvice, Na Kuthence

Total area	140 m <sup>2</sup>
Floor area*	110 m <sup>2</sup>
Balcony	10 m <sup>2</sup>
Terrace	20 m <sup>2</sup>
Parking	Courtyard parking space included.
Cellar	-
PENB	G
Reference number	5303
Available from	Immediately

**Bright modern 2-bedroom 2-bathroom duplex flat with a spacious terrace and balcony (30 m<sup>2</sup> in total) with a nice view, on the 2nd floor of a modern corner townhouse without a lift, and surrounded by greenery. Located in the prestigious Hanspaulka residential neighborhood with quick connection to the Prague 6 international schools and the airport. A short walk from a bus stop, and the Hradcanska metro station is 12 minutes by bus.**

Downstairs is a spacious entry hall with French window and built-in storage, fully fitted modern kitchen partly open to the large living room and access to the terrace, bedroom with en-suite bathroom with corner bathtub, separate toilet, and a laundry room. Upstairs is the second bedroom with en-suite shower bathroom and access to the upper terrace providing splendid far reaching views.

Shared garden available, parquet floors and tiles, glass interior doors, built-in wardrobe, dishwasher, microwave, satellite TV connection, video entry phone, alarm. Courtyard parking space included. Common building charges and utilities 3,000 CZK/month.



\* Area of the unit according to the Civil Code. The area consists of the sum total area of the entire unit bounded by perimeter walls.