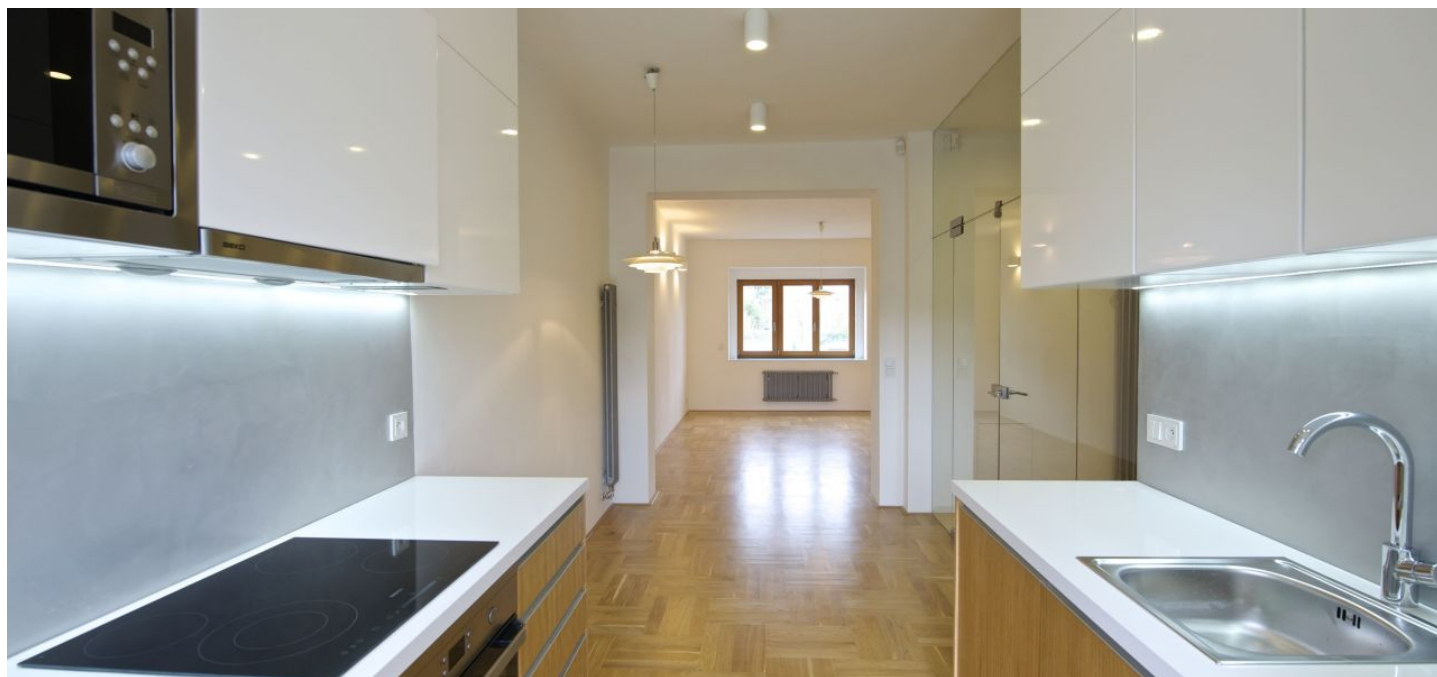




## Apartment One-bedroom (2+kk)

€ 809 | CZK 20 000

70 m², Prague 6, Břevnov, Zeyerova alej





# Apartment One-bedroom (2+kk)

€ 809 | CZK 20 000

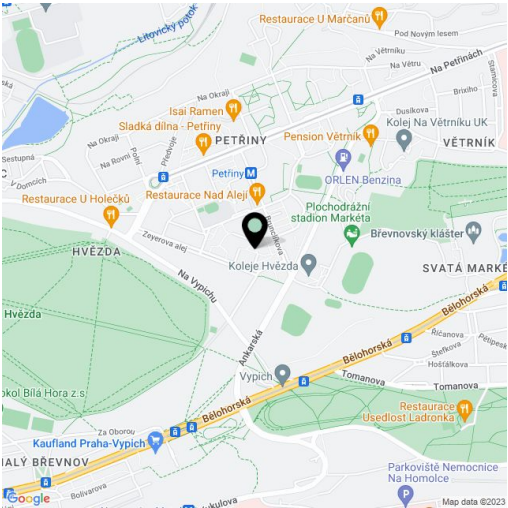
70 m², Prague 6, Břevnov, Zeyerova alej

Total area	76 m²
Floor area*	70 m²
Terrace	6 m²
Parking	-
Cellar	-
PENB	G
Reference number	568
Available from	Immediately

Completely renovated architect designed 1-bedroom flat with a terrace and direct access to the shared garden situated on the upper ground floor of a corner town house. Located in a quiet residential area in close vicinity of the Hvězda natural park, with good amenities within easy reach and quick access to the city center, the airport and international schools. Tram stop two minutes from the house.

The interior features one bedroom, living room with a fully fitted open kitchen and terrace access, bathroom with tub, bidet and toilet, storage room, and a spacious entry hall with built-in wardrobes.

Parquet and tile floors, security entry door, built-in storage, security blinds, central gas heating, washing machine, dishwasher, microwave oven, telephone line, satellite connection, Internet, alarm, energy meters. Can be furnished at a higher rent. Easy parking on the street. Monthly deposit for common building charges and utilities CZK 1500 per month.



\* Area of the unit according to the Civil Code. The area consists of the sum total area of the entire unit bounded by perimeter walls.