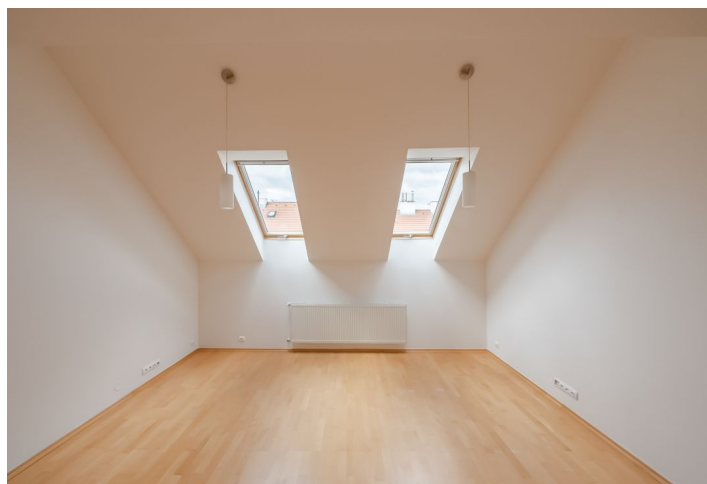




## Apartment Three-bedroom (4+kk)

Rented

130.35 m<sup>2</sup>, Praha 6, Bubeneč, N. A. Někrasova





## Apartment Three-bedroom (4+kk)

Rented

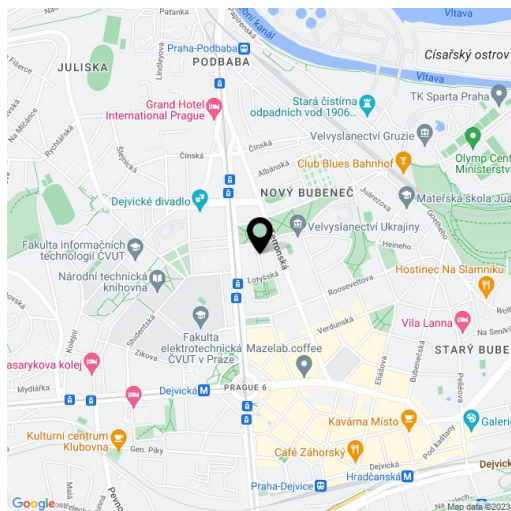
130.35 m<sup>2</sup>, Praha 6, Bubeneč, N. A. Někrasova

Total area	146 m <sup>2</sup>
Floor area*	130 m <sup>2</sup>
Terrace	15 m <sup>2</sup>
Parking	-
Cellar	-
PENB	G
Reference number	5899
Available from	Immediately

This is a 3-bedroom 2-bathroom duplex apartment with a sunny terrace providing beautiful views on the 4th floor of a building without lift. Well located just a few min. walk from Dejvická metro station with multiple tram and bus connections (five min. to the city center by metro), and within walking distance of the Prague Castle and Stromovka Park. Full amenities and services are available in the immediate neighborhood as well as the Czech Technical University campus. Conveniently located for the Prague 6 international schools and the airport.

The lower level consists of an entry hall with built-in wardrobe, living room with fully fitted open kitchen, two bedrooms, bathroom with bath tub, shower and washroom, separate toilet, and storage room. **Upstairs** is the third bedroom with large storage and access to the **terrace** providing green views of the courtyard garden and beyond, and shower bathroom with toilet.

Laminated floors, tiles, alarm, dishwasher, microwave oven, nicely maintained shared garden. Common building charges and utilities approx. CZK 4000/month.



\* Area of the unit according to the Civil Code. The area consists of the sum total area of the entire unit bounded by perimeter walls.