



House Four-bedroom (5+kk)

Sold

566 m², Praha-západ, Průhonice, Ke Školce





House Four-bedroom (5+kk)

Sold566 m², Praha-západ, Průhonice, Ke Školce

Total area	566 m ²
Plot	411 m ²
Foot print	316 m ²
Garden	96 m ²
Floor area	428 m ²
Terrace	138 m ²
Parking	Double garage
Garage	Yes
Cellar	-
PENB	G
Reference number	5949

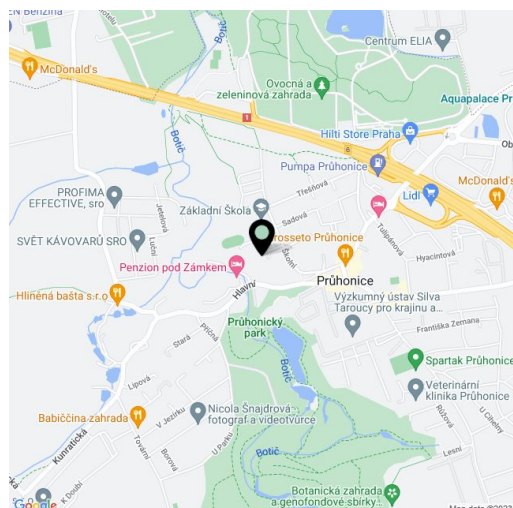
Half of a modern two-story villa offering spacious terraces, situated on top of a rocky hill opposite Průhonický Chateau.

On the ground floor is a **double garage**, utility room, and entry hall leading into an open space living and kitchen area with direct access to a spacious terrace (100 m²) providing an unobstructed panoramic view of the chateau. The ground floor is complete with a study and master bedroom with walk-through closet leading into a large bathroom with a shower and bathtub. The first floor features two children's bedrooms each with a balcony, a guest room, bathroom, and the second terrace.

The property is equipped with a **modern system** including floor heating, electric blinds, security / smoke detection system, central vacuum cleaner, and a high quality lighting system.

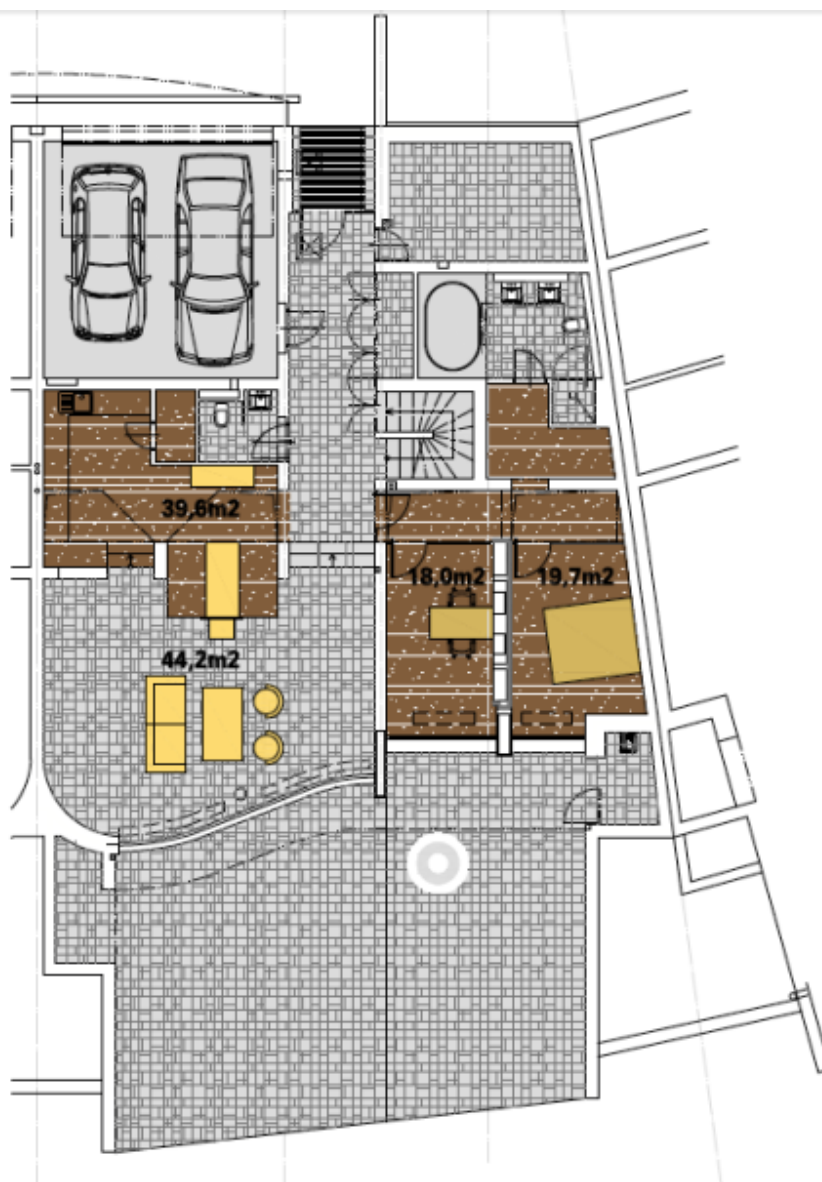
A prestigious residential location with full amenities. Near the house is a nursery and primary school, playground, swimming pool and the large Průhonický Park. Shopping and entertainment zone in Čestlice only a few minutes by car.

Usable area 428 m², living area 253 m², terraces 138 m², foot print 315 m², garden 96 m², plot 411 m².





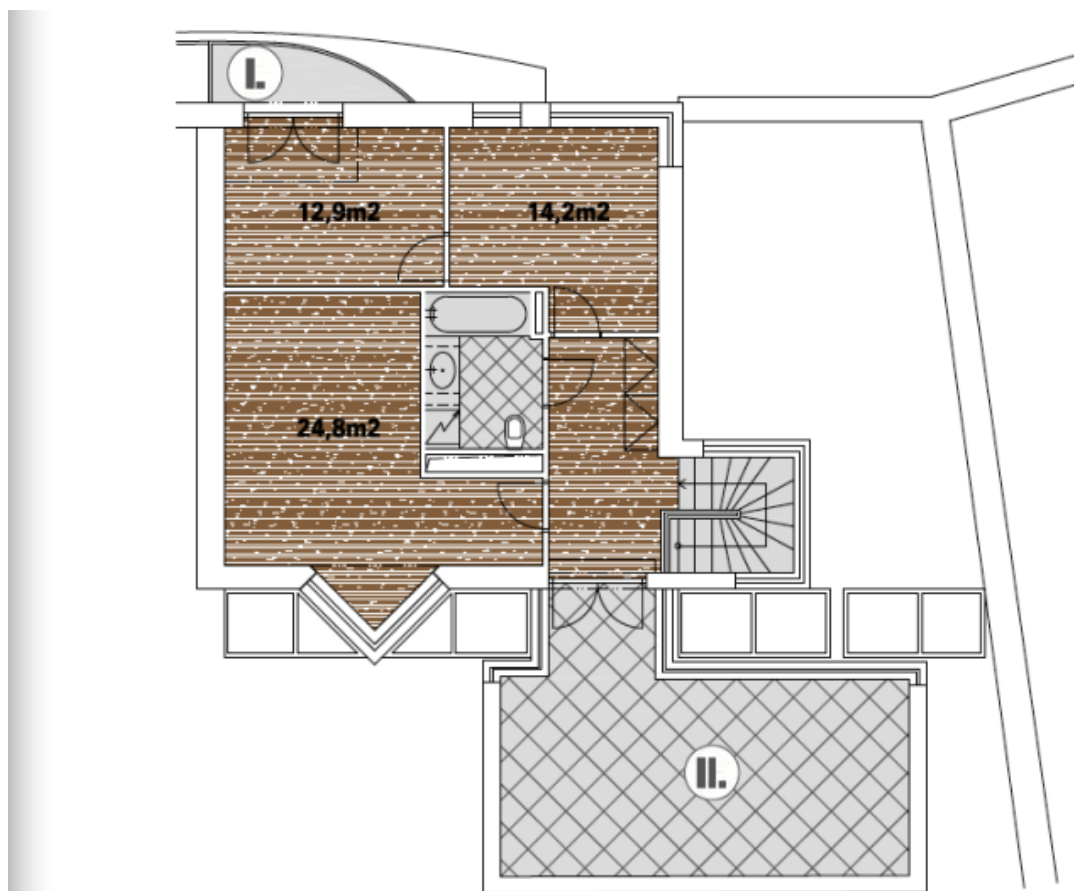
House Four-bedroom (5+kk)

Sold566 m², Praha-západ, Průhonice, Ke Školce

Floor space gnd floor	179,0m²
Terasa gnd floor	102,0m²
Garage gnd floor	34,8m²
Total gnd floor	315,8m²



House Four-bedroom (5+kk)

Sold566 m², Praha-západ, Průhonice, Ke Školce

Floor space 1st floor	74,3m²
Terasa I. 1st floor	3,8m²
Terasa II. 1st floor	32,4m²
Total 1st floor	110,5m²