



Apartment Three-bedroom (4+kk)

Rented

139 m², Prague 2, Vinohrady, Francouzská





Apartment Three-bedroom (4+kk)

Rented

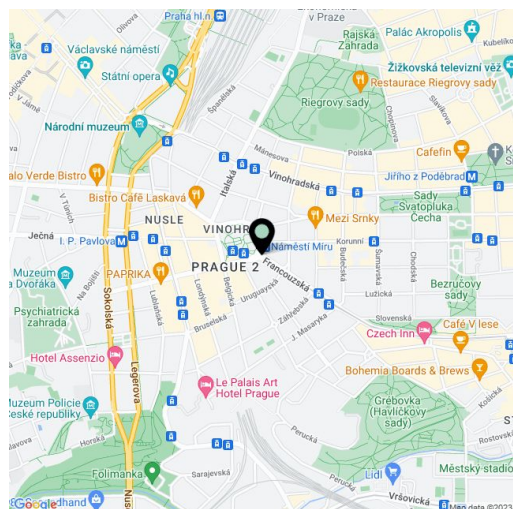
139 m², Prague 2, Vinohrady, Francouzská

Total area	151 m ²
Floor area*	139 m ²
Terrace	12 m ²
Parking	-
Cellar	-
Service price	Deposit for common building charges CZK 3,000/month. Gas and electricity are paid separately.
PENB	G
Reference number	6025
Available from	Immediately

Benefiting from a 12 sq. m. terrace facing the green courtyard, this 3-level attic apartment is on the fourth topmost floor of a renovated traditional building with an elevator. Nicely located just 300 m from the trams and metro station on Náměstí Míru Square, with the Havlíčkovy and Riegrovy Sady parks nearby. Within walking distance of the city center, with dozens of fine restaurants, sidewalk cafes, and coffee shops in the area.

Ground floor: one bedroom with an en-suite toilet, an entrance hall with built-in storage. First floor: spacious open plan living room with a fully fitted kitchen and pantry, one bedroom with terrace access, third bedroom, walk-in closet, bathroom (double sink, bathtub, walk-in shower, bidet), separate toilet. Second floor: large attic room (max. height 1.7 m).

Hardwood parquet floors, tiles, security entry door, blinds, dishwasher. Ideal for students.



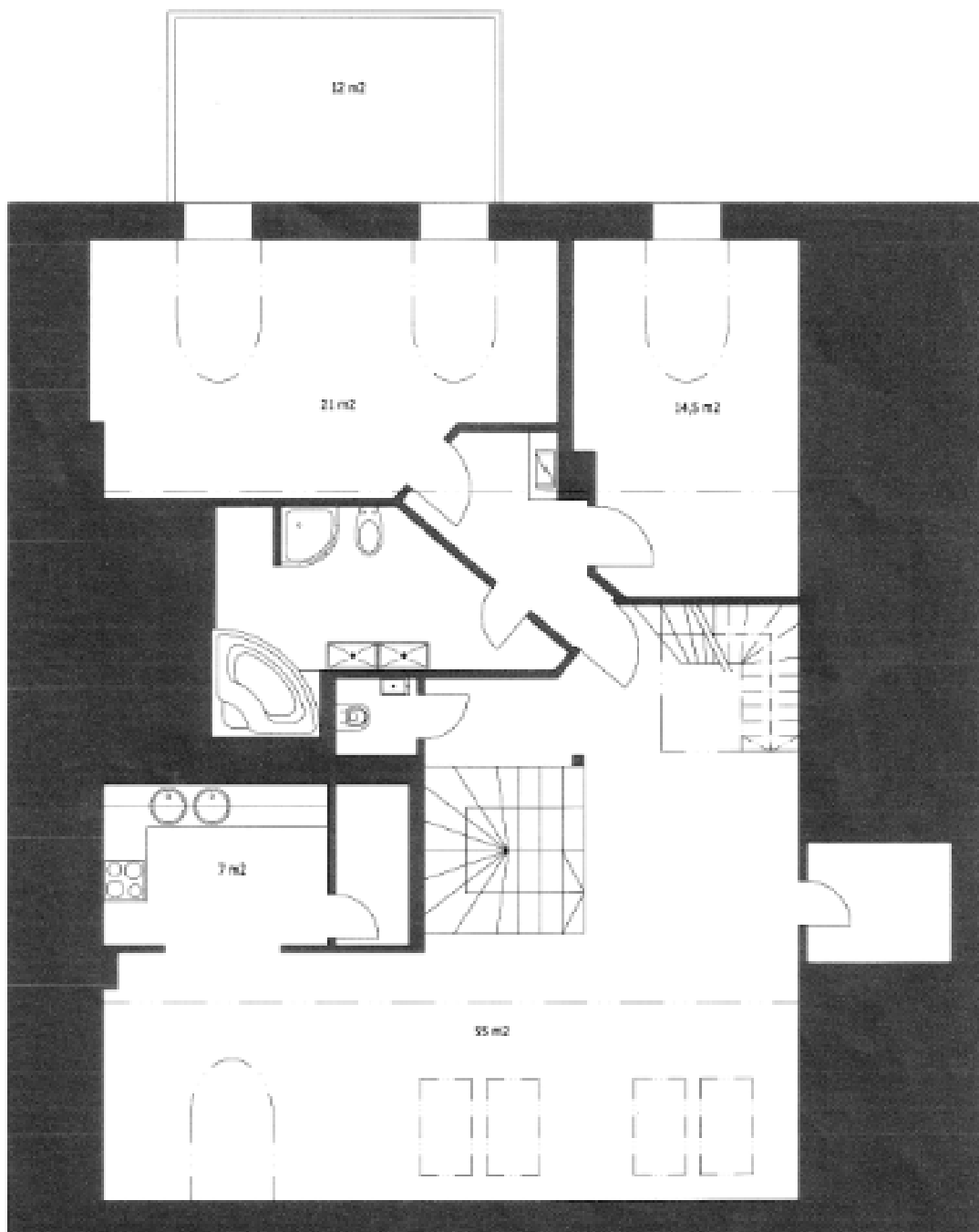
* Area of the unit according to the Civil Code. The area consists of the sum total area of the entire unit bounded by perimeter walls.



Apartment Three-bedroom (4+kk)

Rented

139 m², Prague 2, Vinohrady, Francouzská

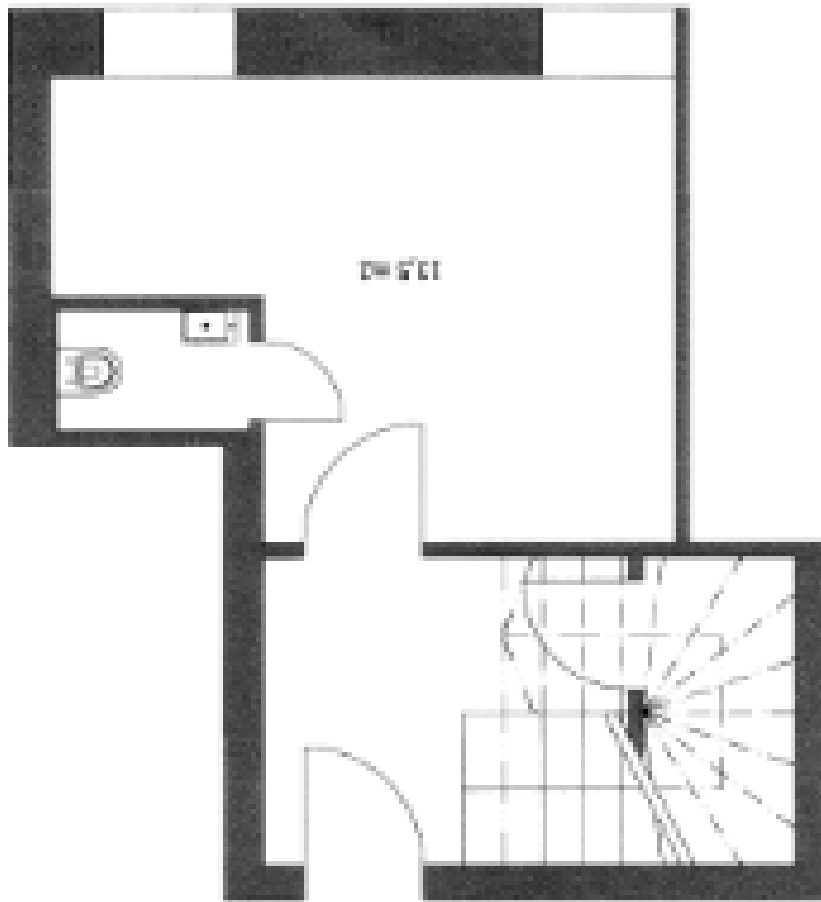




Apartment Three-bedroom (4+kk)

Rented

139 m², Prague 2, Vinohrady, Francouzská

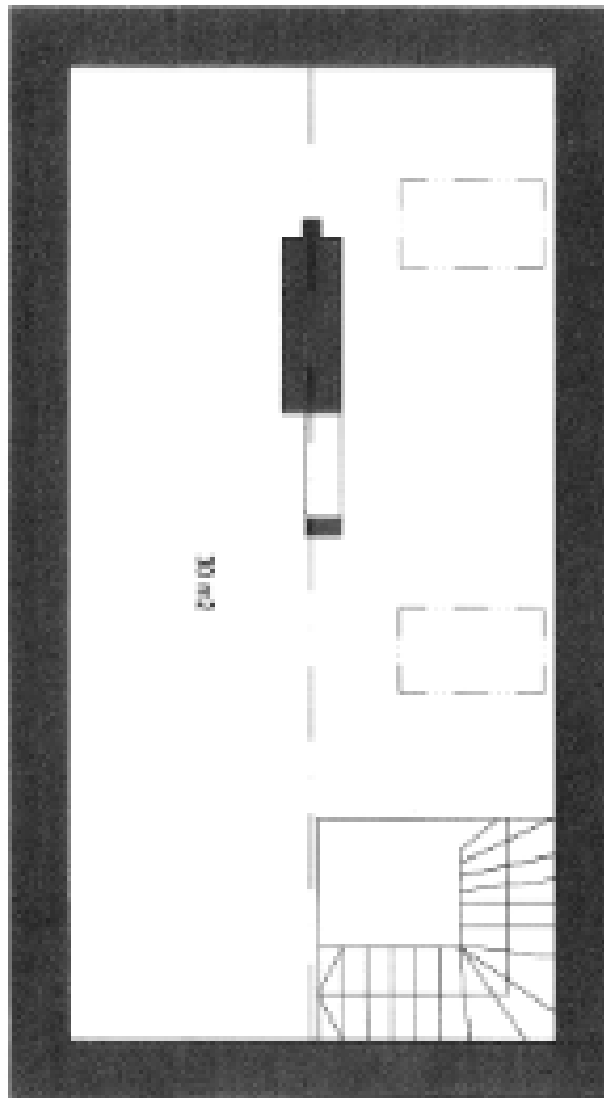




Apartment Three-bedroom (4+kk)

139 m², Prague 2, Vinohrady, Francouzská

Rented





Apartment Three-bedroom (4+kk)

Rented

139 m², Prague 2, Vinohrady, Francouzská

