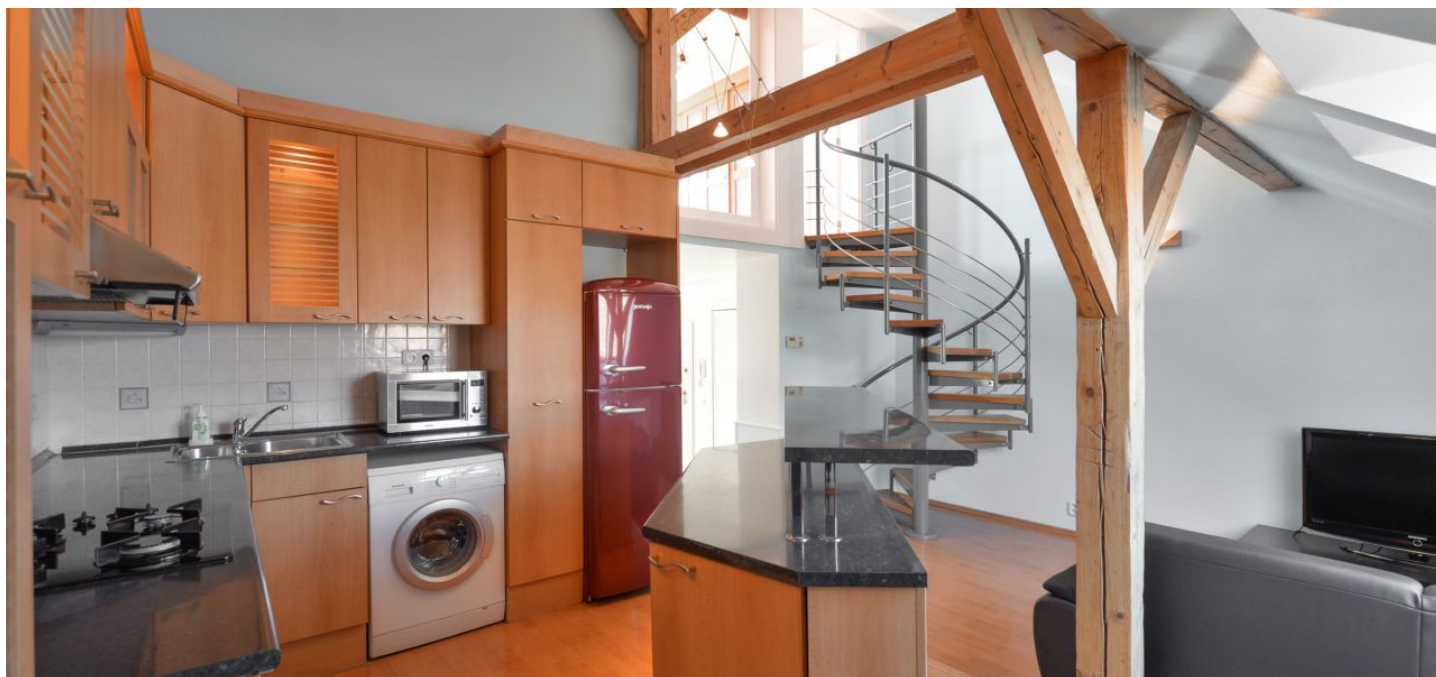




Apartment Three-bedroom (4+kk)

Rented

97 m², Prague 6, Bubeneč, Sukova





Apartment Three-bedroom (4+kk)

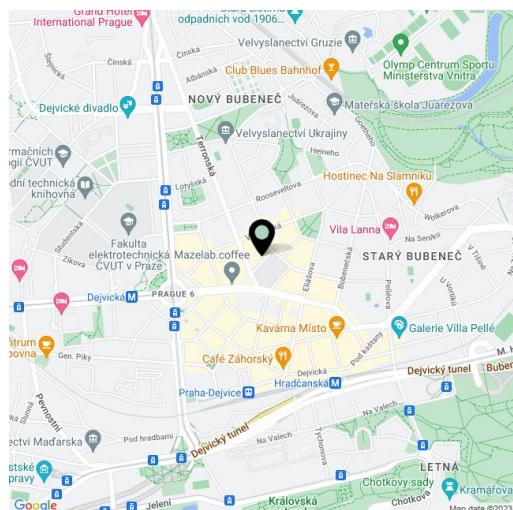
Rented97 m², Prague 6, Bubeneč, Sukova

Total area	120 m ²
Floor area*	97 m ²
Terrace	23 m ²
Parking	-
Cellar	-
PENB	G
Reference number	6090
Available from	Immediately

Nicely reconstructed furnished split-level 3-bedroom 2-bathroom attic flat with 2 terraces (total of 23 m²) on the 5th floor with lift in a reconstructed building. Located in the sought after Prague 6 neighborhood with green parks (minutes from Stromovka Park) and great transportation connections, a few minutes to Dejvická or Hradčanská metro station. Convenient to the Prague 6 international schools.

The lower level consists of an entry hall with terrace access, living room with fully fitted kitchen, 2 bedrooms, bathroom with walk-in shower, and a separate toilet. Upstairs is another bedroom with en-suite bathroom with bath tub and toilet and access to the terrace providing far reaching views.

Storage space, built-in wardrobes, security door, blinds, washer, microwave, flat screen TV, cable TV, audio entry phone. Basement storage. The rental price includes building service and cleaning (twice a month). Common building charges and water CZK 4,000/month. Energies will be transferred to the tenant's name.



* Area of the unit according to the Civil Code. The area consists of the sum total area of the entire unit bounded by perimeter walls.

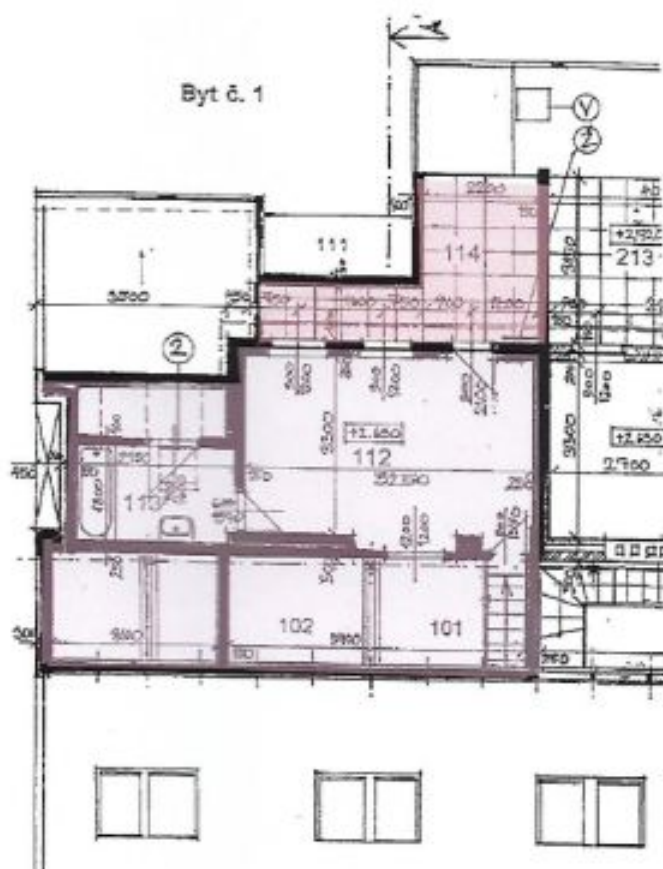


Apartment Three-bedroom (4+kk)

97 m², Prague 6, Bubeneč, Sukova

Rented

- 101 Galerie
- 112 Ložnice
- 113 Koupelna a komora
- 114 Terasa





Apartment Three-bedroom (4+kk)

Rented

97 m², Prague 6, Bubeneč, Sukova

- 101+102 Obytná místnost s kk
- 104 Předstíh
- 105 Chodba
- 106 Komora
- 107 Ložnice
- 108 Ložnice
- 109 Koupelna
- 110 WC
- 111 Terasa

